

Product datasheet for **TA367351**

CHD3 Rabbit Polyclonal Antibody

Product data:

Product Type:	Primary Antibodies
Applications:	IHC, WB
Recommended Dilution:	WB: 500-2000 WB positive control: RAW264.7 cell lysate IHC: 50-100 Positive control: Human colorectal cancer Predicted cell location: Nucleus and Cytoplasm
Reactivity:	Human, Mouse
Host:	Rabbit
Isotype:	IgG
Clonality:	Polyclonal
Immunogen:	Synthetic peptide of human CHD3
Formulation:	pH7.4 PBS, 0.05% NaN ₃ , 40% Glycerol
Concentration:	lot specific
Purification:	Antigen affinity purification
Conjugation:	Unconjugated
Storage:	Store at -20°C.
Stability:	1 year
Predicted Protein Size:	226 kDa
Gene Name:	chromodomain helicase DNA binding protein 3
Database Link:	Entrez Gene 1107 Human Q12873



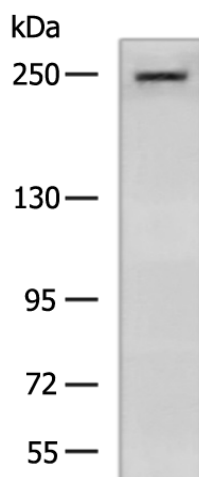
[View online »](#)

Background:

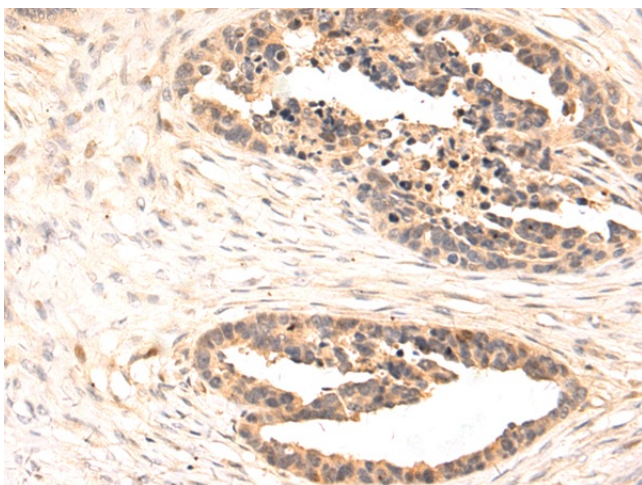
This gene encodes a member of the CHD family of proteins which are characterized by the presence of chromo (chromatin organization modifier) domains and SNF2-related helicase/ATPase domains. This protein is one of the components of a histone deacetylase complex referred to as the Mi-2/NuRD complex which participates in the remodeling of chromatin by deacetylating histones. Chromatin remodeling is essential for many processes including transcription. Autoantibodies against this protein are found in a subset of patients with dermatomyositis. Three alternatively spliced transcripts encoding different isoforms have been described.

Synonyms:

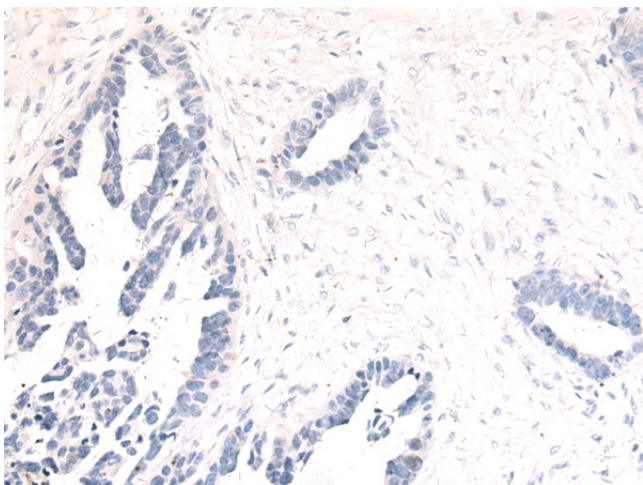
CHD-3; hZFH; Mi-2a; Mi2-ALPHA; ZFH

Product images:

Gel: 6%SDS-PAGE
Lysate: 40 µg
Lane: RAW264.7 cell lysate
Primary antibody: TA367351 (CHD3 Antibody) at dilution 1/800
Secondary antibody: Goat anti rabbit IgG at 1/5000 dilution
Exposure time: 10 minutes



Immunohistochemistry of paraffin-embedded Human colorectal cancer tissue using TA367351 (CHD3 Antibody) at dilution 1/50 (Original magnification: ×200)



Immunohistochemistry of paraffin-embedded Human colorectal cancer tissue using TA367351 (CHD3 Antibody) at dilution 1/50, treated with synthetic peptide. (Original magnification: ×200)