

## Product datasheet for **TA367350S**

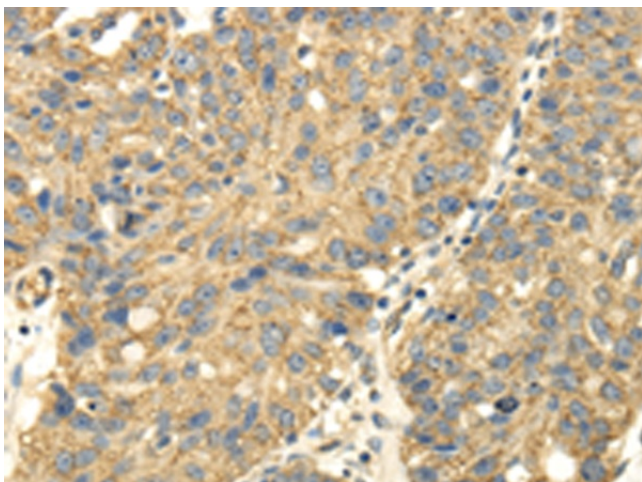
### **UHRF1BP1 Rabbit Polyclonal Antibody**

#### **Product data:**

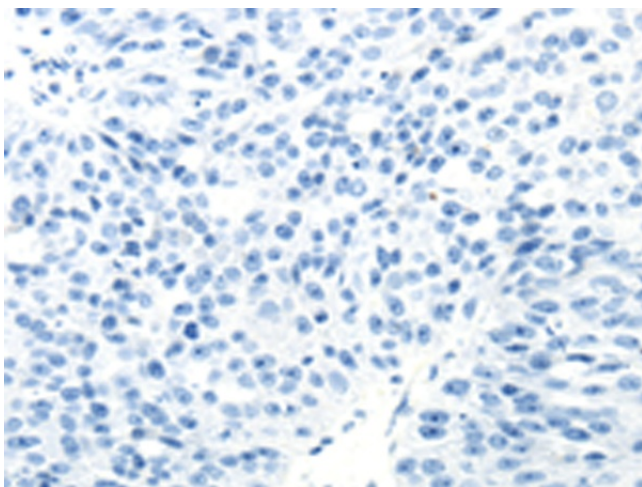
<b>Product Type:</b>	Primary Antibodies
<b>Applications:</b>	IHC
<b>Recommended Dilution:</b>	IHC: 25-100 Positive control: Human breast cancer Predicted cell location: Cytoplasm
<b>Reactivity:</b>	Human
<b>Host:</b>	Rabbit
<b>Isotype:</b>	IgG
<b>Clonality:</b>	Polyclonal
<b>Immunogen:</b>	Synthetic peptide of human UHRF1BP1
<b>Formulation:</b>	pH7.4 PBS, 0.05% NaN <sub>3</sub> , 40% Glycerol
<b>Purification:</b>	Antigen affinity purification
<b>Conjugation:</b>	Unconjugated
<b>Storage:</b>	Store at -20°C.
<b>Stability:</b>	1 year
<b>Gene Name:</b>	UHRF1 binding protein 1
<b>Database Link:</b>	<a href="#">Entrez Gene 54887 Human Q6BDS2</a>
<b>Background:</b>	UHRF1BP1 (UHRF1 binding protein 1) is a 1,440 amino acid protein that interacts with UHRF1 and may act as a negative regulator of cell growth. The UHRF1BP1 protein has been identified as a possible risk loci for systemic lupus erythematosus. The UHRF1BP1 gene is conserved in chimpanzee, dog, cow, mouse, rat, chicken, zebrafish and C.elegans, and maps to human chromosome 6p21.31.
<b>Synonyms:</b>	C6orf107; CG31653-PA-like; dj349A12.1; FLJ20302; ICBP90



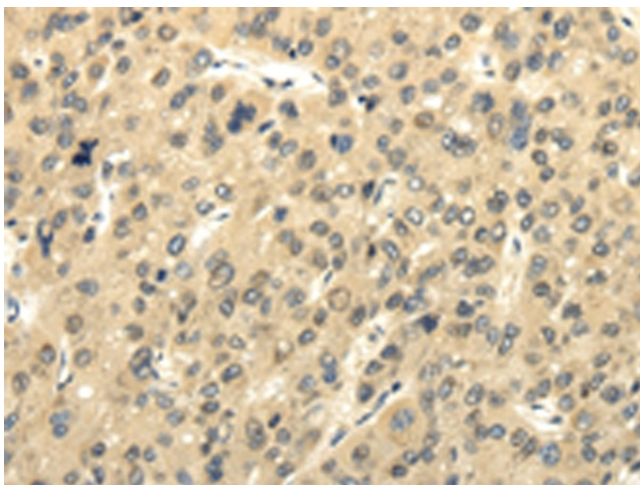
[View online »](#)

**Product images:**

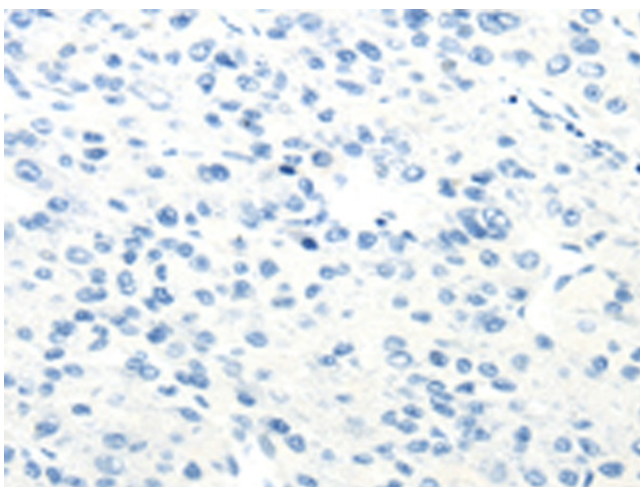
Immunohistochemistry of paraffin-embedded Human breast cancer tissue using [TA367350] (UHRF1BP1 Antibody) at dilution 1/25 (Original magnification:  $\times 200$ )



Immunohistochemistry of paraffin-embedded Human breast cancer tissue using [TA367350] (UHRF1BP1 Antibody) at dilution 1/25, treated with synthetic peptide. (Original magnification:  $\times 200$ )



Immunohistochemistry of paraffin-embedded Human liver cancer tissue using [TA367350] (UHRF1BP1 Antibody) at dilution 1/25 (Original magnification:  $\times 200$ )



Immunohistochemistry of paraffin-embedded Human liver cancer tissue using [TA367350] (UHRF1BP1 Antibody) at dilution 1/25, treated with synthetic peptide. (Original magnification:  $\times 200$ )