

Product datasheet for **TA367343S**

UAP56 (DDX39B) Rabbit Polyclonal Antibody

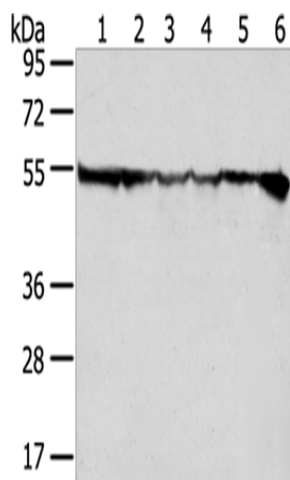
Product data:

Product Type:	Primary Antibodies
Applications:	IHC, WB
Recommended Dilution:	WB: 500-2000 WB positive control: Hela, HepG2, Jurkat, 231, SKOV3 and 293T cells IHC: 25-100 Positive control: Human breast cancer Predicted cell location: Nucleus
Reactivity:	Human, Mouse, Rat
Host:	Rabbit
Isotype:	IgG
Clonality:	Polyclonal
Immunogen:	Synthetic peptide of human DDX39B
Formulation:	pH7.4 PBS, 0.05% NaN ₃ , 40% Glycerol
Purification:	Antigen affinity purification
Conjugation:	Unconjugated
Storage:	Store at -20°C.
Stability:	1 year
Predicted Protein Size:	49 kDa
Gene Name:	DEAD-box helicase 39B
Database Link:	Entrez Gene 7919 Human Q13838
Background:	This gene encodes a member of the DEAD box family of RNA-dependent ATPases that mediate ATP hydrolysis during pre-mRNA splicing. The encoded protein is an essential splicing factor required for association of U2 small nuclear ribonucleoprotein with pre-mRNA, and it also plays an important role in mRNA export from the nucleus to the cytoplasm. This gene belongs to a cluster of genes localized in the vicinity of the genes encoding tumor necrosis factor alpha and tumor necrosis factor beta.
Synonyms:	0610030D10Rik; AI428441; Bat-1; Bat1; Bat1a; D6S81Eh; D17H6S81E; D17H6S81E-1; p47

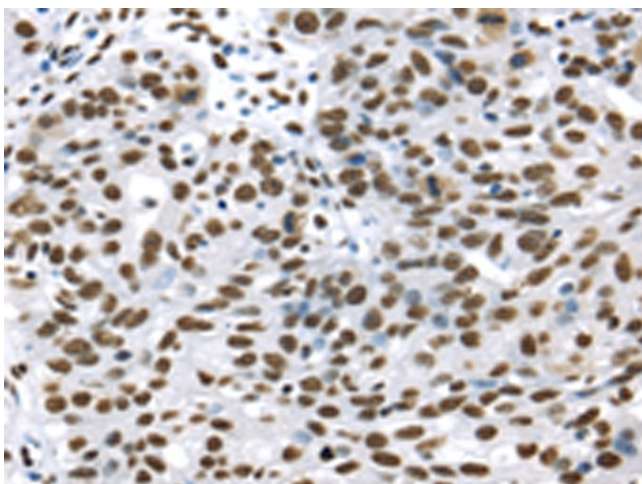


[View online »](#)

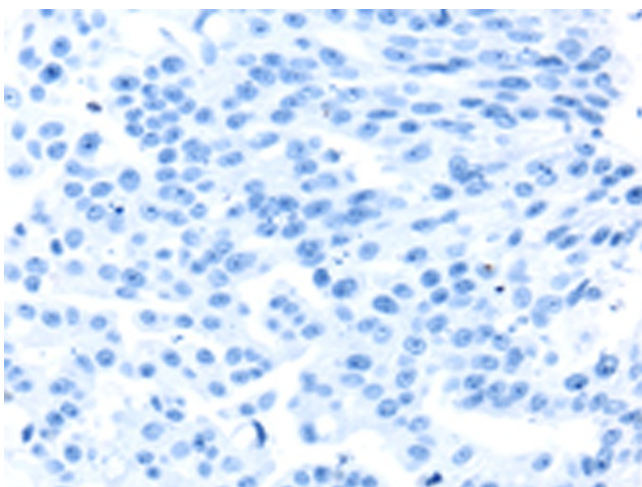
Product images:



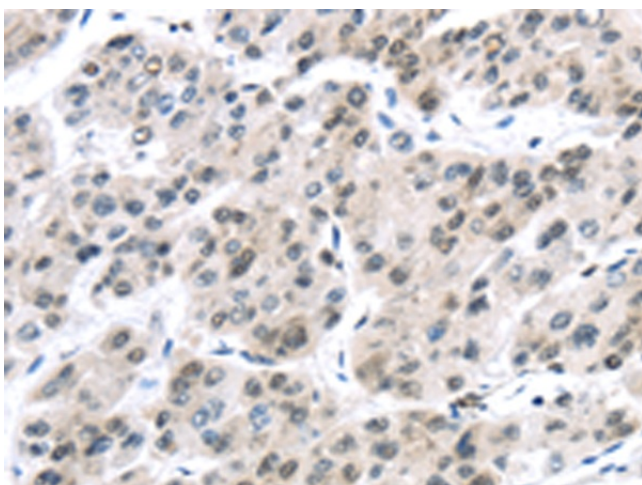
Gel: 8%SDS-PAGE
Lysate: 40 µg
Lane 1-6: HeLa cells
HepG2 cells
Jurkat cells
231 cells
SKOV3 cells
293T cells
Primary antibody: [TA367343] (DDX39B Antibody)
at dilution 1/200
Secondary antibody: Goat anti rabbit IgG at
1/8000 dilution
Exposure time: 1 second



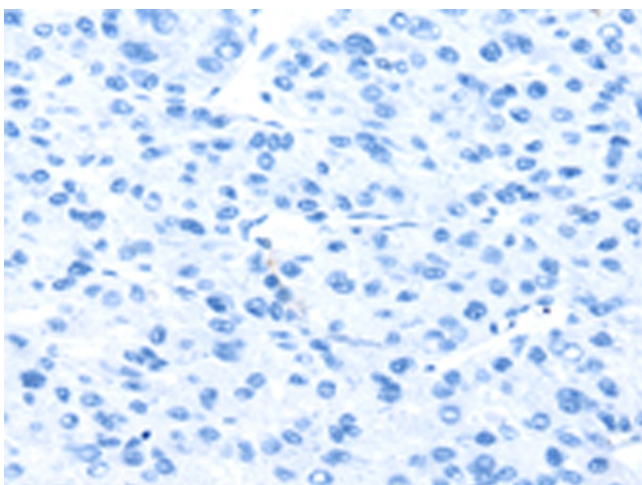
Immunohistochemistry of paraffin-embedded
Human breast cancer tissue using [TA367343]
(DDX39B Antibody) at dilution 1/35 (Original
magnification: ×200)



Immunohistochemistry of paraffin-embedded Human breast cancer tissue using [TA367343] (DDX39B Antibody) at dilution 1/35, treated with synthetic peptide. (Original magnification: ×200)



Immunohistochemistry of paraffin-embedded Human liver cancer tissue using [TA367343] (DDX39B Antibody) at dilution 1/35 (Original magnification: ×200)



Immunohistochemistry of paraffin-embedded Human liver cancer tissue using [TA367343] (DDX39B Antibody) at dilution 1/35, treated with synthetic peptide. (Original magnification: ×200)