

## Product datasheet for **TA367343**

### UAP56 (DDX39B) Rabbit Polyclonal Antibody

#### Product data:

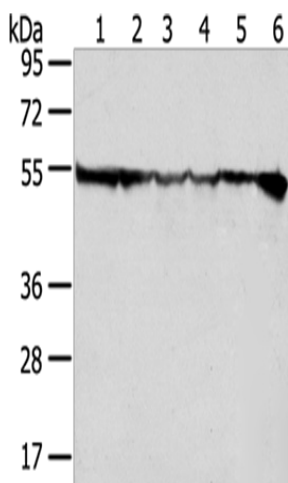
Product Type:	Primary Antibodies
Applications:	IHC, WB
Recommended Dilution:	WB: 500-2000 WB positive control: Hela, HepG2, Jurkat, 231, SKOV3 and 293T cells IHC: 25-100 Positive control: Human breast cancer Predicted cell location: Nucleus
Reactivity:	Human, Mouse, Rat
Host:	Rabbit
Isotype:	IgG
Clonality:	Polyclonal
Immunogen:	Synthetic peptide of human DDX39B
Formulation:	pH7.4 PBS, 0.05% NaN <sub>3</sub> , 40% Glycerol
Concentration:	lot specific
Purification:	Antigen affinity purification
Conjugation:	Unconjugated
Storage:	Store at -20°C.
Stability:	1 year
Predicted Protein Size:	49 kDa
Gene Name:	DEAD-box helicase 39B
Database Link:	<a href="#">Entrez Gene 7919 Human Q13838</a>
Background:	This gene encodes a member of the DEAD box family of RNA-dependent ATPases that mediate ATP hydrolysis during pre-mRNA splicing. The encoded protein is an essential splicing factor required for association of U2 small nuclear ribonucleoprotein with pre-mRNA, and it also plays an important role in mRNA export from the nucleus to the cytoplasm. This gene belongs to a cluster of genes localized in the vicinity of the genes encoding tumor necrosis factor alpha and tumor necrosis factor beta.



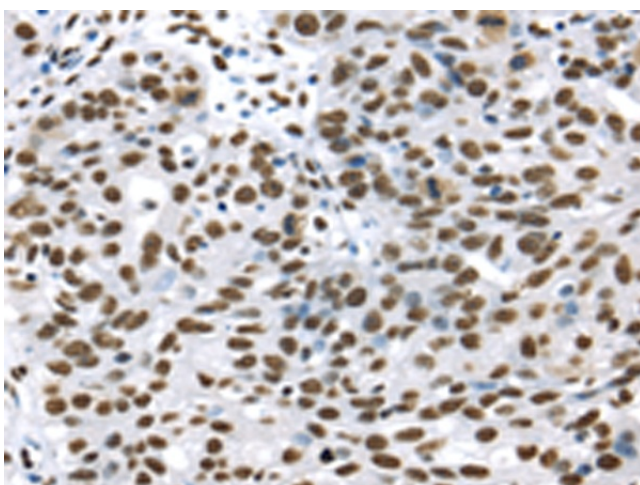
[View online »](#)

**Synonyms:** 0610030D10Rik; AI428441; Bat-1; Bat1; Bat1a; D6S81Eh; D17H6S81E; D17H6S81E-1; p47

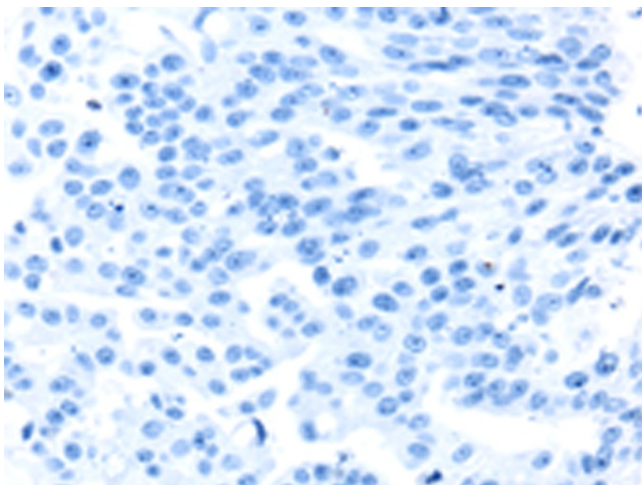
**Product images:**



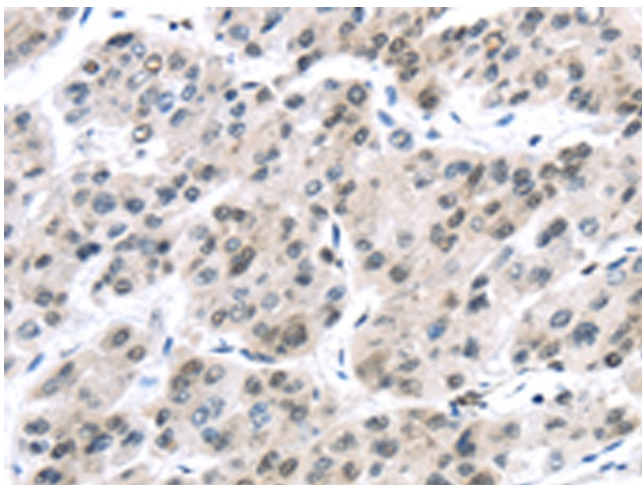
Gel: 8%SDS-PAGE  
 Lysate: 40 µg  
 Lane 1-6: HeLa cells  
 HepG2 cells  
 Jurkat cells  
 231 cells  
 SKOV3 cells  
 293T cells  
 Primary antibody: TA367343 (DDX39B Antibody)  
 at dilution 1/200  
 Secondary antibody: Goat anti rabbit IgG at  
 1/8000 dilution  
 Exposure time: 1 second



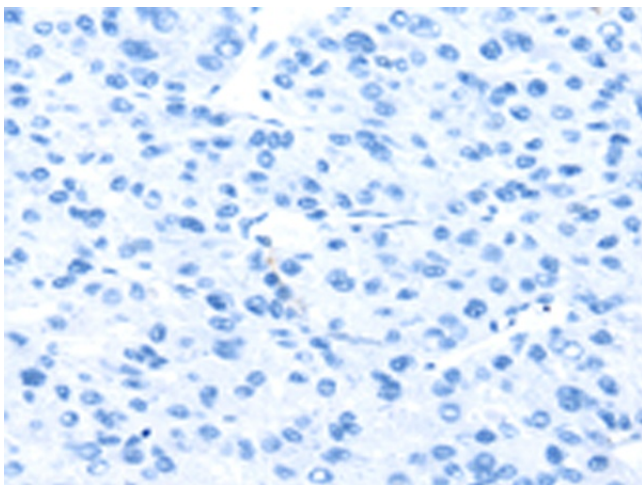
Immunohistochemistry of paraffin-embedded  
 Human breast cancer tissue using TA367343  
 (DDX39B Antibody) at dilution 1/35 (Original  
 magnification: ×200)



Immunohistochemistry of paraffin-embedded Human breast cancer tissue using TA367343 (DDX39B Antibody) at dilution 1/35, treated with synthetic peptide. (Original magnification:  $\times 200$ )



Immunohistochemistry of paraffin-embedded Human liver cancer tissue using TA367343 (DDX39B Antibody) at dilution 1/35 (Original magnification:  $\times 200$ )



Immunohistochemistry of paraffin-embedded Human liver cancer tissue using TA367343 (DDX39B Antibody) at dilution 1/35, treated with synthetic peptide. (Original magnification:  $\times 200$ )