

## Product datasheet for **TA367342S**

### **TXNDC4 (ERP44) Rabbit Polyclonal Antibody**

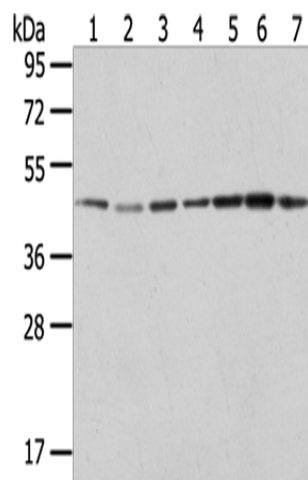
#### **Product data:**

Product Type:	Primary Antibodies
Applications:	IHC, WB
Recommended Dilution:	WB: 500-2000 WB positive control: Raji, A549, HeLa, HepG2, 231, K562 and A431 cells IHC: 25-100 Positive control: Human liver cancer Predicted cell location: Cytoplasm
Reactivity:	Human, Mouse
Host:	Rabbit
Isotype:	IgG
Clonality:	Polyclonal
Immunogen:	Synthetic peptide of human ERP44
Formulation:	pH7.4 PBS, 0.05% NaN <sub>3</sub> , 40% Glycerol
Purification:	Antigen affinity purification
Conjugation:	Unconjugated
Storage:	Store at -20°C.
Stability:	1 year
Predicted Protein Size:	47 kDa
Gene Name:	endoplasmic reticulum protein 44
Database Link:	<a href="#">Entrez Gene 23071 Human Q9BS26</a>
Background:	ERP44 is a 406 amino acid protein that contains one thioredoxin domain, a motif that participates in various redox reactions throughout the cell. Localized to the lumen of the endoplasmic reticulum (ER), TXNDC4 functions to inhibit the activity of IP3R-I (inositol 1,4,5-triphosphate receptor, type 1) within calcium channels. In addition, TXNDC4 is thought to regulate oxidative protein folding within the ER and may be involved in retaining proteins.
Synonyms:	KIAA0573; PDIA10; TXNDC4

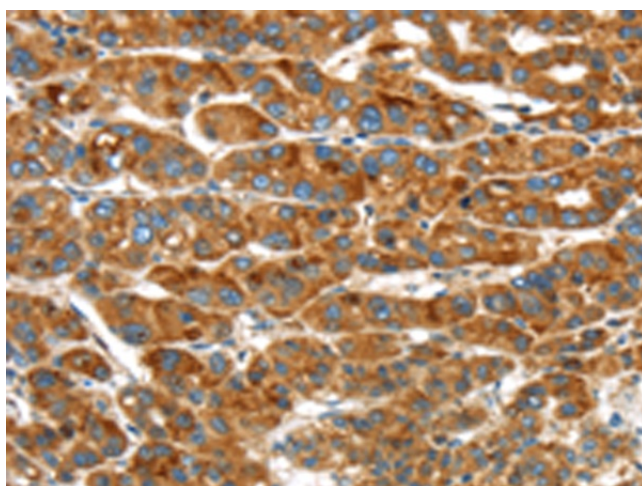


[View online »](#)

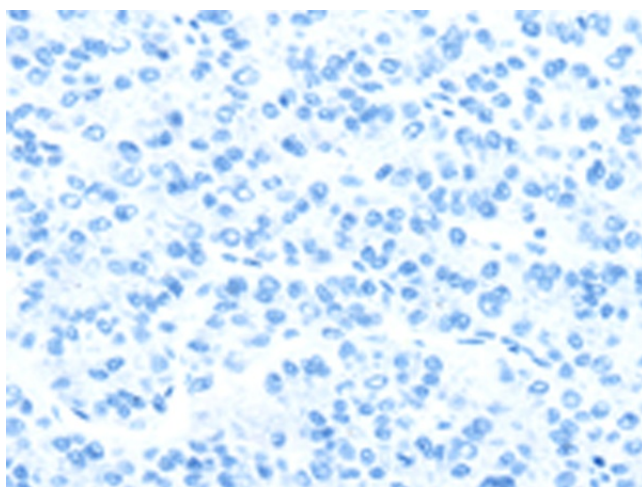
## Product images:



Gel: 8%SDS-PAGE  
Lysate: 40  $\mu$ g  
Lane 1-7: Raji cells  
A549 cells  
HeLa cells  
HepG2 cells  
231 cells  
K562 cells  
A431 cells  
Primary antibody: [TA367342] (ERP44 Antibody) at dilution 1/200  
Secondary antibody: Goat anti rabbit IgG at 1/8000 dilution  
Exposure time: 10 seconds



Immunohistochemistry of paraffin-embedded Human liver cancer tissue using [TA367342] (ERP44 Antibody) at dilution 1/20 (Original magnification:  $\times$ 200)



Immunohistochemistry of paraffin-embedded Human liver cancer tissue using [TA367342] (ERP44 Antibody) at dilution 1/20, treated with synthetic peptide. (Original magnification:  $\times$ 200)