

## Product datasheet for **TA367331S**

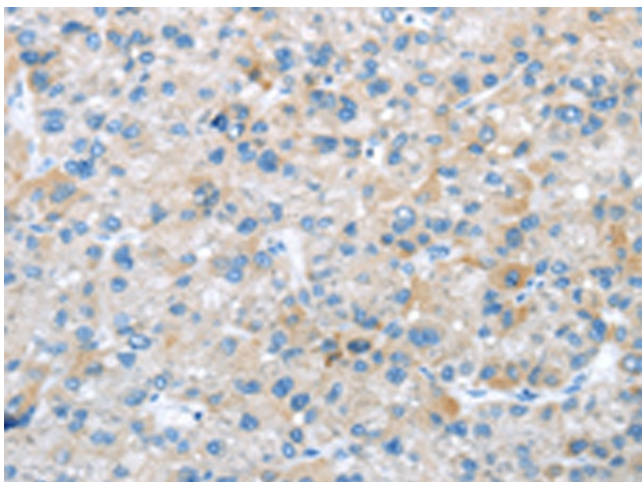
### TRIM47 Rabbit Polyclonal Antibody

#### Product data:

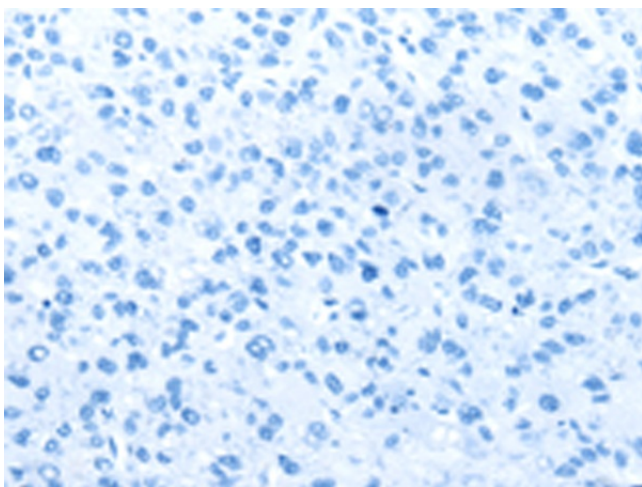
Product Type:	Primary Antibodies
Applications:	IHC
Recommended Dilution:	IHC: 10-50 Positive control: Human liver cancer Predicted cell location: Cytoplasm
Reactivity:	Human, Mouse
Host:	Rabbit
Isotype:	IgG
Clonality:	Polyclonal
Immunogen:	Synthetic peptide of human TRIM47
Formulation:	pH7.4 PBS, 0.05% NaN <sub>3</sub> , 40% Glycerol
Purification:	Antigen affinity purification
Conjugation:	Unconjugated
Storage:	Store at -20°C.
Stability:	1 year
Gene Name:	tripartite motif containing 47
Database Link:	<a href="#">Entrez Gene 91107 Human Q96LD4</a>
Background:	TRIM47 (tripartite motif-containing 47), also known as GOA (Gene overexpressed in astrocytoma protein) or RNF100 (RING finger protein 100), is a 638 amino acid protein that localizes to both cytoplasm and nucleus and belongs to the TRIM/RBCC family. While TRIM47 expression is low in most tissues, it is highly expressed in kidney tubular cells and overexpressed in astrocytoma tumor cells.
Synonyms:	GOA; RNF100



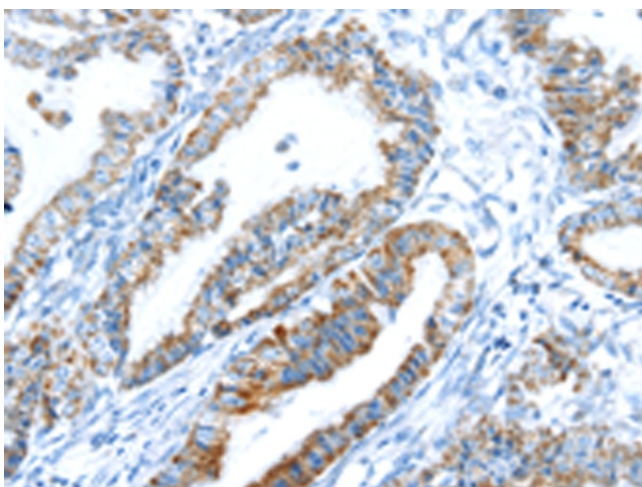
[View online »](#)

**Product images:**


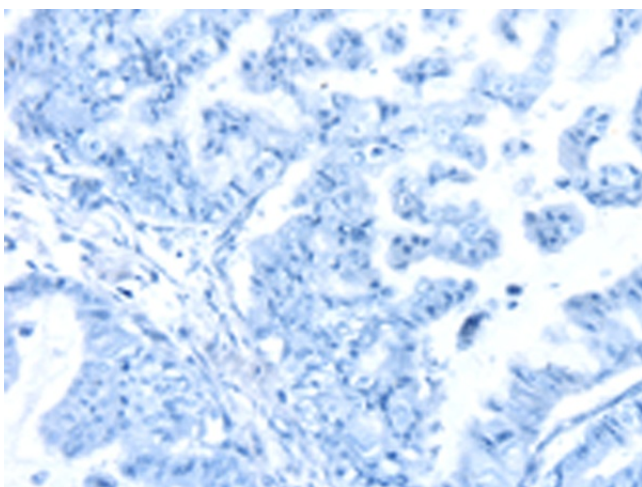
Immunohistochemistry of paraffin-embedded Human liver cancer tissue using [TA367331] (TRIM47 Antibody) at dilution 1/20 (Original magnification: ×200)



Immunohistochemistry of paraffin-embedded Human liver cancer tissue using [TA367331] (TRIM47 Antibody) at dilution 1/20, treated with synthetic peptide. (Original magnification: ×200)



Immunohistochemistry of paraffin-embedded Human esophagus cancer tissue using [TA367331] (TRIM47 Antibody) at dilution 1/20 (Original magnification:  $\times 200$ )



Immunohistochemistry of paraffin-embedded Human esophagus cancer tissue using [TA367331] (TRIM47 Antibody) at dilution 1/20, treated with synthetic peptide. (Original magnification:  $\times 200$ )