

Product datasheet for **TA367327**

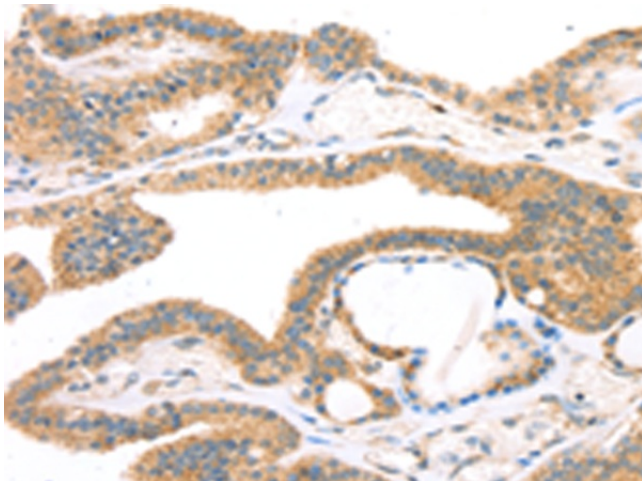
Tryptophan 5 hydroxylase 2 (TPH2) Rabbit Polyclonal Antibody

Product data:

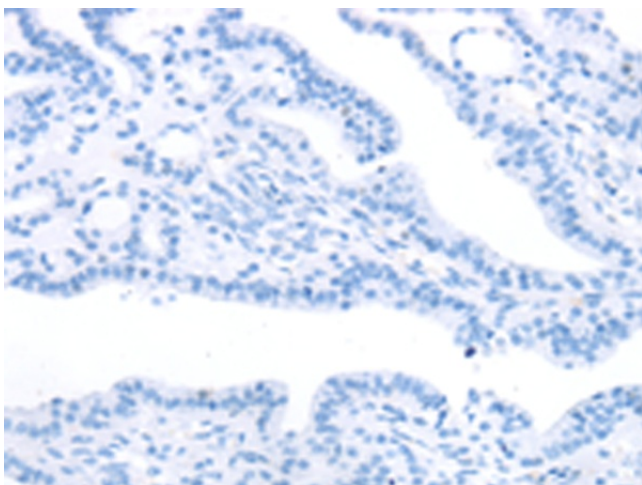
Product Type:	Primary Antibodies
Applications:	IHC
Recommended Dilution:	IHC: 10-50 Positive control: Human thyroid cancer Predicted cell location: Cytoplasm and Cell membrane
Reactivity:	Human, Mouse, Rat
Host:	Rabbit
Isotype:	IgG
Clonality:	Polyclonal
Immunogen:	Synthetic peptide of human TPH2
Formulation:	pH7.4 PBS, 0.05% NaN ₃ , 40% Glycerol
Concentration:	lot specific
Purification:	Antigen affinity purification
Conjugation:	Unconjugated
Storage:	Store at -20°C.
Stability:	1 year
Gene Name:	tryptophan hydroxylase 2
Database Link:	Entrez Gene 121278 Human Q8IWU9
Background:	This gene encodes a member of the pterin-dependent aromatic acid hydroxylase family. The encoded protein catalyzes the first and rate limiting step in the biosynthesis of serotonin, an important hormone and neurotransmitter. The human genome contains two related tryptophan hydroxylases, one on chromosome 11p15-p14 and one on chromosome 12q21. This gene is expressed predominantly in the brain stem.
Synonyms:	ADHD7; FLJ37295; MGC138871; MGC138872; NTPH



[View online »](#)

Product images:

Immunohistochemistry of paraffin-embedded Human thyroid cancer tissue using TA367327 (TPH2 Antibody) at dilution 1/25 (Original magnification: $\times 200$)



Immunohistochemistry of paraffin-embedded Human thyroid cancer tissue using TA367327 (TPH2 Antibody) at dilution 1/25, treated with synthetic peptide. (Original magnification: $\times 200$)