

## Product datasheet for **TA367320**

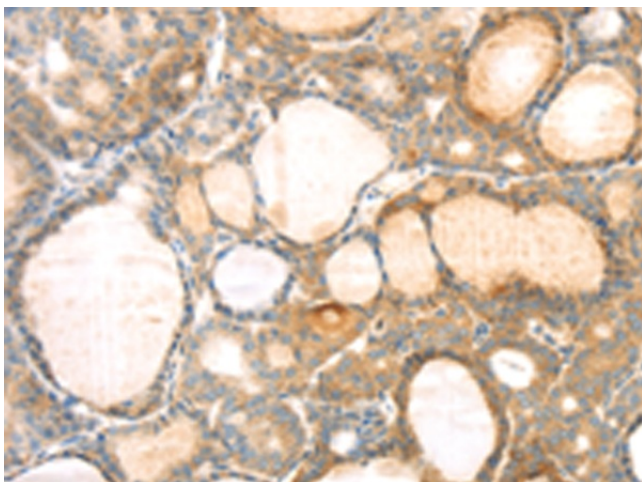
### **TMEM166 (EVA1A) Rabbit Polyclonal Antibody**

#### **Product data:**

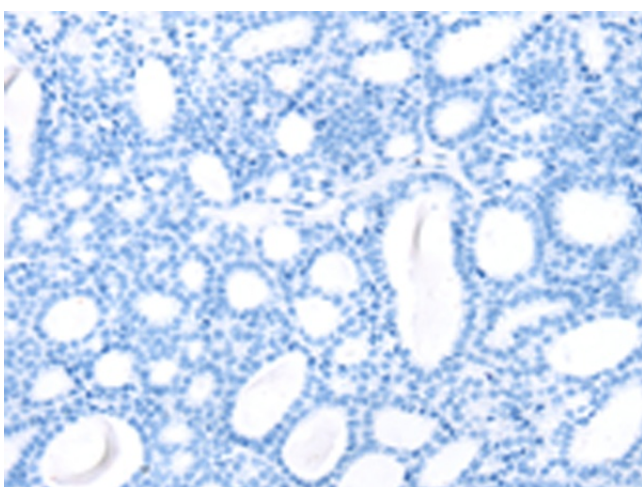
Product Type:	Primary Antibodies
Applications:	IHC
Recommended Dilution:	IHC: 25-100 Positive control: Human thyroid cancer Predicted cell location: Cytoplasm
Reactivity:	Human, Mouse
Host:	Rabbit
Isotype:	IgG
Clonality:	Polyclonal
Immunogen:	Synthetic peptide of human EVA1A
Formulation:	pH7.4 PBS, 0.05% NaN <sub>3</sub> , 40% Glycerol
Concentration:	lot specific
Purification:	Antigen affinity purification
Conjugation:	Unconjugated
Storage:	Store at -20°C.
Stability:	1 year
Gene Name:	eva-1 homolog A, regulator of programmed cell death
Database Link:	<a href="#">Entrez Gene 84141 Human Q9H8M9</a>
Background:	Acts as a regulator of programmed cell death, mediating both autophagy and apoptosis.
Synonyms:	BC014699; Fam176a; RGD1559797; Tmem166



[View online »](#)

**Product images:**

Immunohistochemistry of paraffin-embedded Human thyroid cancer tissue using TA367320 (EVA1A Antibody) at dilution 1/30 (Original magnification:  $\times 200$ )



Immunohistochemistry of paraffin-embedded Human thyroid cancer tissue using TA367320 (EVA1A Antibody) at dilution 1/30, treated with synthetic peptide. (Original magnification:  $\times 200$ )