

## Product datasheet for **TA367315**

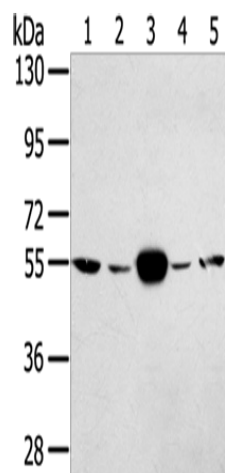
### TRIM35 Rabbit Polyclonal Antibody

#### Product data:

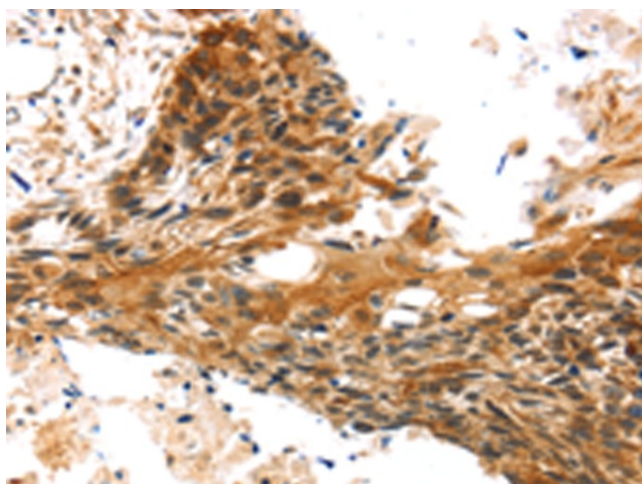
Product Type:	Primary Antibodies
Applications:	IHC, WB
Recommended Dilution:	WB: 500-2000 WB positive control: Hela and K562 cells, human fetal muscle tissue, A375 and hepg2 cells IHC: 25-100 Positive control: Human esophagus cancer Predicted cell location: Nucleus and Cytoplasm
Reactivity:	Human
Host:	Rabbit
Isotype:	IgG
Clonality:	Polyclonal
Immunogen:	Synthetic peptide of human TRIM35
Formulation:	pH7.4 PBS, 0.05% NaN <sub>3</sub> , 40% Glycerol
Concentration:	lot specific
Purification:	Antigen affinity purification
Conjugation:	Unconjugated
Storage:	Store at -20°C.
Stability:	1 year
Predicted Protein Size:	57 kDa
Gene Name:	tripartite motif containing 35
Database Link:	<a href="#">Entrez Gene 23087 Human Q9UPQ4</a>
Background:	The protein encoded by this gene is a member of the tripartite motif (TRIM) family. The TRIM motif includes three zinc-binding domains, a RING, a B-box type 1 and a B-box type 2, and a coiled-coil region. The function of this protein has not been identified.
Synonyms:	HLS5; KIAA1098; MAIR; MGC17233



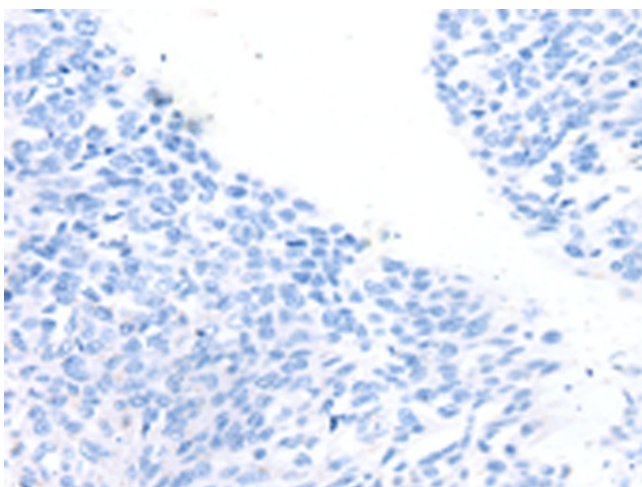
[View online »](#)

**Product images:**

Gel: 8%SDS-PAGE  
Lysate: 40  $\mu$ g  
Lane 1-5: HeLa cells  
K562 cells  
human fetal muscle tissue  
A375 cells  
hepg2 cells  
Primary antibody: TA367315 (TRIM35 Antibody)  
at dilution 1/400  
Secondary antibody: Goat anti rabbit IgG at  
1/8000 dilution  
Exposure time: 20 seconds



Immunohistochemistry of paraffin-embedded  
Human esophagus cancer tissue using TA367315  
(TRIM35 Antibody) at dilution 1/25 (Original  
magnification:  $\times$ 200)



Immunohistochemistry of paraffin-embedded Human esophagus cancer tissue using TA367315 (TRIM35 Antibody) at dilution 1/25, treated with synthetic peptide. (Original magnification:  $\times 200$ )