

Product datasheet for **TA367312**

TIF1 alpha (TRIM24) Rabbit Polyclonal Antibody

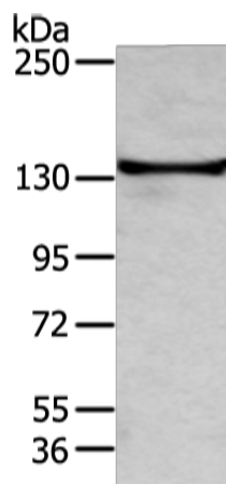
Product data:

Product Type:	Primary Antibodies
Applications:	WB
Recommended Dilution:	WB: 200-1000 WB positive control: 293T cell
Reactivity:	Human, Mouse
Host:	Rabbit
Isotype:	IgG
Clonality:	Polyclonal
Immunogen:	Synthetic peptide of human TRIM24
Formulation:	pH7.4 PBS, 0.05% NaN ₃ , 40% Glycerol
Concentration:	lot specific
Purification:	Antigen affinity purification
Conjugation:	Unconjugated
Storage:	Store at -20°C.
Stability:	1 year
Predicted Protein Size:	117/113 kDa
Gene Name:	tripartite motif containing 24
Database Link:	Entrez Gene 8805 Human O15164
Background:	The protein encoded by this gene mediates transcriptional control by interaction with the activation function 2 (AF2) region of several nuclear receptors, including the estrogen, retinoic acid, and vitamin D3 receptors. The protein localizes to nuclear bodies and is thought to associate with chromatin and heterochromatin-associated factors. The protein is a member of the tripartite motif (TRIM) family. The TRIM motif includes three zinc-binding domains - a RING, a B-box type 1 and a B-box type 2 - and a coiled-coil region.
Synonyms:	hTIF1; PTC6; RNF82; TF1A; TIF1; TIF1-alpha; TIF1A; TIF1ALPHA



[View online »](#)

Product images:



Gel: 6%SDS-PAGE
Lysate: 80 μ g
Lane: 293T cell
Primary antibody: TA367312 (TRIM24 Antibody)
at dilution 1/400
Secondary antibody: Goat anti rabbit IgG at
1/8000 dilution
Exposure time: 1 minute