

Product datasheet for **TA367299**

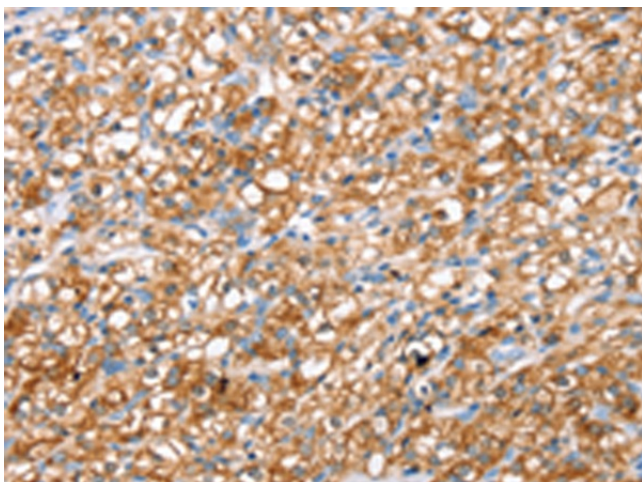
SUR1 (ABCC8) Rabbit Polyclonal Antibody

Product data:

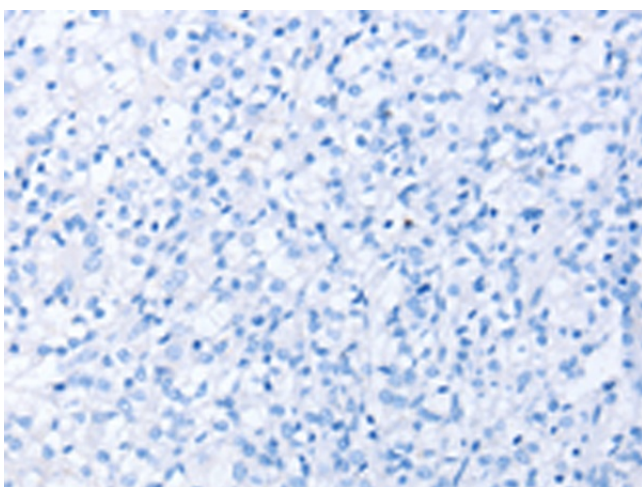
| | |
|-----------------------|--|
| Product Type: | Primary Antibodies |
| Applications: | IHC |
| Recommended Dilution: | IHC: 25-100 Positive control: Human prostate cancer Predicted cell location: Cytoplasm and Cell membrane |
| Reactivity: | Human, Rat |
| Host: | Rabbit |
| Isotype: | IgG |
| Clonality: | Polyclonal |
| Immunogen: | Synthetic peptide of human ABCC8 |
| Formulation: | pH7.4 PBS, 0.05% NaN3, 40% Glycerol |
| Concentration: | lot specific |
| Purification: | Antigen affinity purification |
| Conjugation: | Unconjugated |
| Storage: | Store at -20°C. |
| Stability: | 1 year |
| Gene Name: | ATP binding cassette subfamily C member 8 |
| Database Link: | Entrez Gene 6833 Human Q09428 |
| Background: | The protein encoded by this gene is a member of the superfamily of ATP-binding cassette (ABC) transporters. ABC proteins transport various molecules across extra- and intra-cellular membranes. ABC genes are divided into seven distinct subfamilies (ABC1, MDR/TAP, MRP, ALD, OABP, GCN20, White). This protein is a member of the MRP subfamily which is involved in multi-drug resistance. This protein functions as a modulator of ATP-sensitive potassium channels and insulin release. |
| Synonyms: | ABC36; HHF1; HI; HRINS; MRP8; PHHI; SUR; SUR1; TNDM2 |



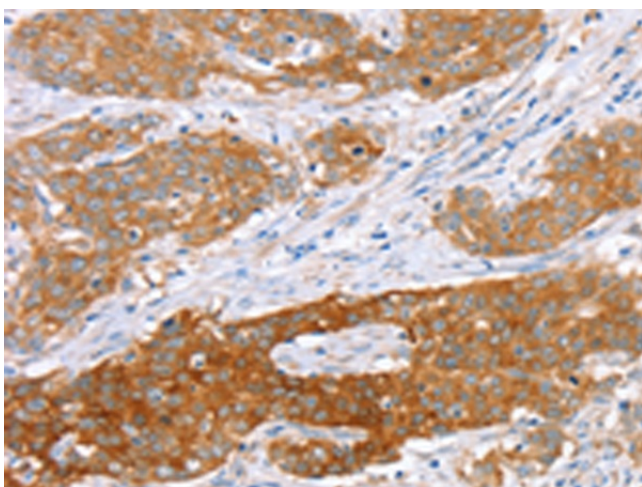
[View online »](#)

Product images:

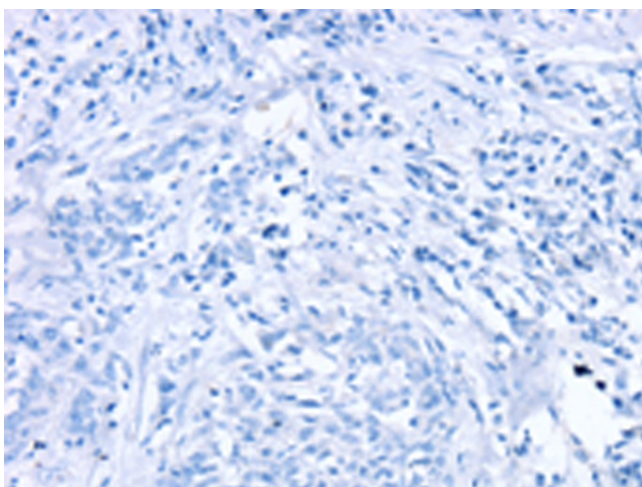
Immunohistochemistry of paraffin-embedded Human prostate cancer tissue using TA367299 (ABCC8 Antibody) at dilution 1/40 (Original magnification: $\times 200$)



Immunohistochemistry of paraffin-embedded Human prostate cancer tissue using TA367299 (ABCC8 Antibody) at dilution 1/40, treated with synthetic peptide. (Original magnification: $\times 200$)



Immunohistochemistry of paraffin-embedded Human cervical cancer tissue using TA367299 (ABCC8 Antibody) at dilution 1/40 (Original magnification: ×200)



Immunohistochemistry of paraffin-embedded Human cervical cancer tissue using TA367299 (ABCC8 Antibody) at dilution 1/40, treated with synthetic peptide. (Original magnification: ×200)