

Product datasheet for **TA367287**

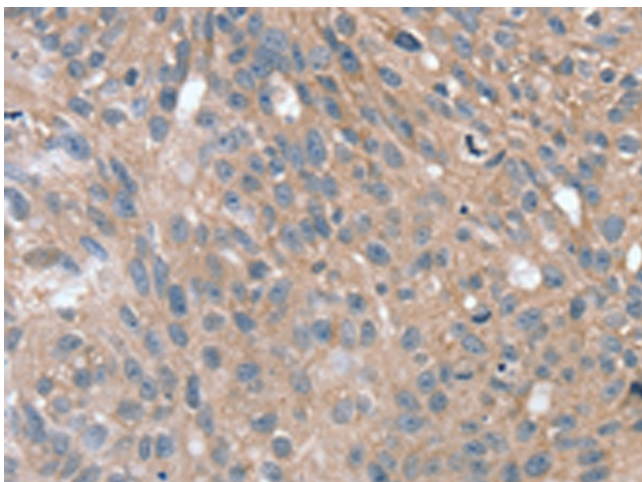
SPON1 Rabbit Polyclonal Antibody

Product data:

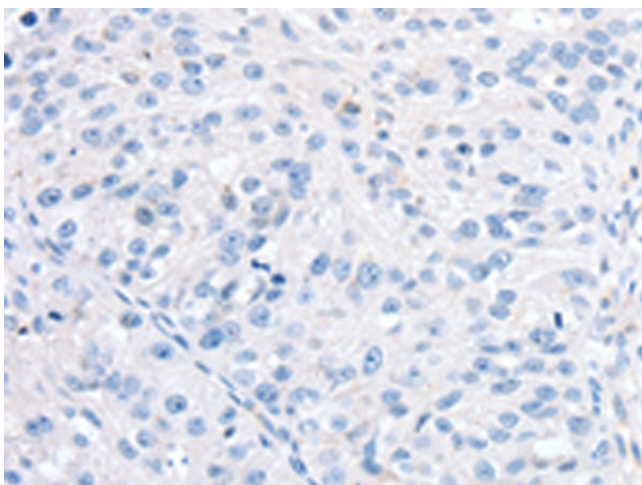
Product Type:	Primary Antibodies
Applications:	IHC
Recommended Dilution:	IHC: 10-50 Positive control: Human breast cancer Predicted cell location: Cytoplasm
Reactivity:	Human, Mouse, Rat
Host:	Rabbit
Isotype:	IgG
Clonality:	Polyclonal
Immunogen:	Synthetic peptide of human SPON1
Formulation:	pH7.4 PBS, 0.05% NaN ₃ , 40% Glycerol
Concentration:	lot specific
Purification:	Antigen affinity purification
Conjugation:	Unconjugated
Storage:	Store at -20°C.
Stability:	1 year
Gene Name:	spondin 1
Database Link:	Entrez Gene 10418 Human Q9HCB6
Background:	F-Spondin, also designated Spondin-1 or vascular smooth muscle growth-promoting factor, is a member of the subgroup of the Thrombospondin type 1 class molecules. F-Spondin is a secreted, extracellular matrix-attached protein which patterns axonal trajectories by promoting adhesion and outgrowth of commissural axons, in addition to inhibiting outgrowth of motor axons.
Synonyms:	F-spondin; KIAA0762; MGC10724; VSGP; VSGP/F-spondin



[View online »](#)

Product images:

Immunohistochemistry of paraffin-embedded Human breast cancer tissue using TA367287 (SPON1 Antibody) at dilution 1/25 (Original magnification: ×200)



Immunohistochemistry of paraffin-embedded Human breast cancer tissue using TA367287 (SPON1 Antibody) at dilution 1/25, treated with synthetic peptide. (Original magnification: ×200)