

## Product datasheet for **TA367286S**

### SPATA5L1 Rabbit Polyclonal Antibody

#### Product data:

|                       |   |
|-----------------------|---|
| Product Type:         | Primary Antibodies  |
| Applications:         | IHC   |
| Recommended Dilution: | IHC: 10-50<br>Positive control: Human breast cancer<br>Predicted cell location: Cytoplasm |
| Reactivity:           | Human   |
| Host:                 | Rabbit  |
| Isotype:              | IgG   |
| Clonality:            | Polyclonal  |
| Immunogen:            | Synthetic peptide of human SPATA5L1   |
| Formulation:          | pH7.4 PBS, 0.05% NaN <sub>3</sub> , 40% Glycerol  |
| Purification:         | Antigen affinity purification   |
| Conjugation:          | Unconjugated  |
| Storage:              | Store at -20°C.   |
| Stability:            | 1 year  |
| Gene Name:            | spermatogenesis associated 5 like 1   |
| Database Link:        | <a href="#">Entrez Gene 79029 Human Q9BVQ7</a>  |

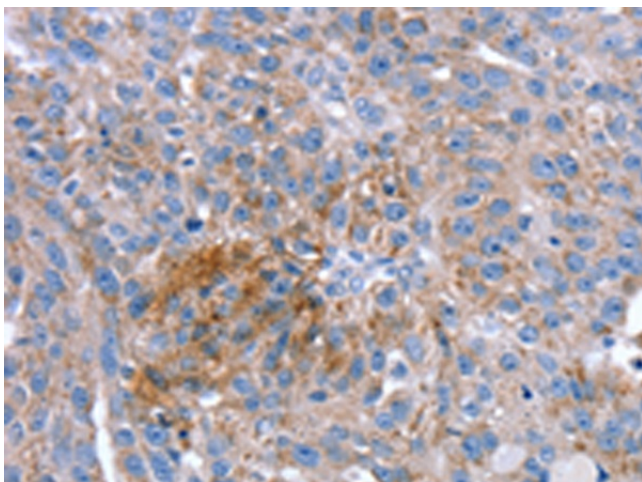
**Background:** SPATA5L1 (spermatogenesis-associated protein 5-like protein 1) is a 753 amino acid protein belonging to the AAA ATPase family and AFG2 subfamily. Single nucleotide polymorphisms (SNPs) present in SPATA5L1 at the glycine amidinotransferase (GATM)-SPATA5L1 locus have been found to correlate with glomerular filtration rate (GFR), having significant implications for kidney disease research. SPATA5L1 localizes to cytoplasm and exists as three alternatively spliced isoforms.

**Synonyms:** FLJ12286; MGC5347

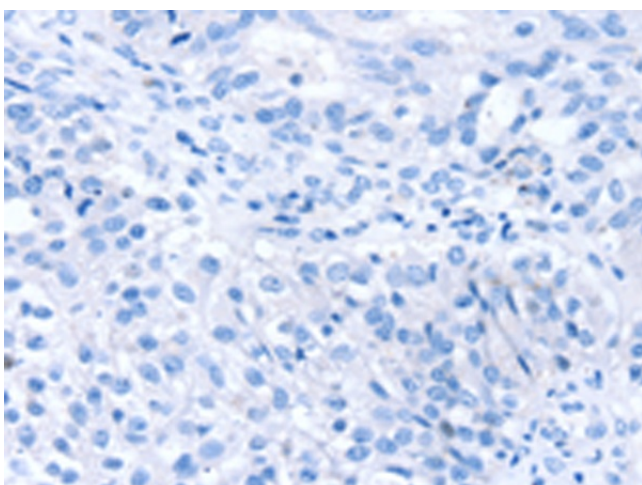


[View online »](#)

## Product images:



Immunohistochemistry of paraffin-embedded Human breast cancer tissue using [TA367286] (SPATA5L1 Antibody) at dilution 1/20 (Original magnification: ×200)



Immunohistochemistry of paraffin-embedded Human breast cancer tissue using [TA367286] (SPATA5L1 Antibody) at dilution 1/20, treated with synthetic peptide. (Original magnification: ×200)