

Product datasheet for **TA367286**

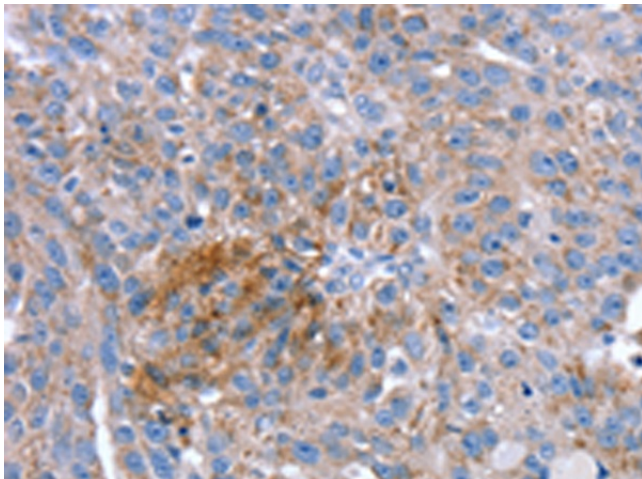
SPATA5L1 Rabbit Polyclonal Antibody

Product data:

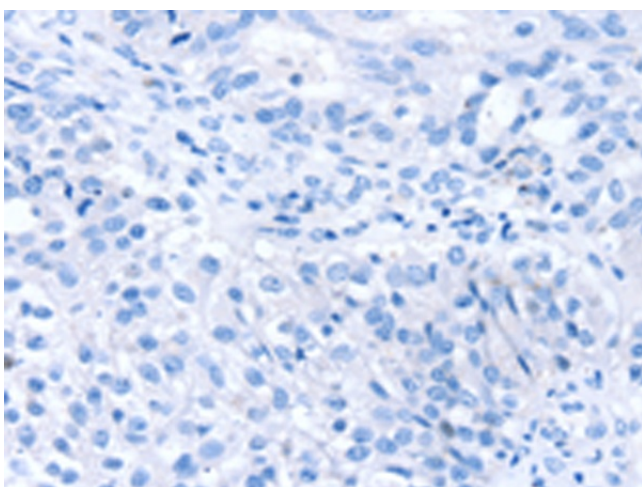
Product Type:	Primary Antibodies
Applications:	IHC
Recommended Dilution:	IHC: 10-50 Positive control: Human breast cancer Predicted cell location: Cytoplasm
Reactivity:	Human
Host:	Rabbit
Isotype:	IgG
Clonality:	Polyclonal
Immunogen:	Synthetic peptide of human SPATA5L1
Formulation:	pH7.4 PBS, 0.05% NaN ₃ , 40% Glycerol
Concentration:	lot specific
Purification:	Antigen affinity purification
Conjugation:	Unconjugated
Storage:	Store at -20°C.
Stability:	1 year
Gene Name:	spermatogenesis associated 5 like 1
Database Link:	Entrez Gene 79029 Human Q9BVQ7
Background:	SPATA5L1 (spermatogenesis-associated protein 5-like protein 1) is a 753 amino acid protein belonging to the AAA ATPase family and AFG2 subfamily. Single nucleotide polymorphisms (SNPs) present in SPATA5L1 at the glycine amidinotransferase (GATM)-SPATA5L1 locus have been found to correlate with glomerular filtration rate (GFR), having significant implications for kidney disease research. SPATA5L1 localizes to cytoplasm and exists as three alternatively spliced isoforms.
Synonyms:	FLJ12286; MGC5347



[View online »](#)

Product images:

Immunohistochemistry of paraffin-embedded Human breast cancer tissue using TA367286 (SPATA5L1 Antibody) at dilution 1/20 (Original magnification: $\times 200$)



Immunohistochemistry of paraffin-embedded Human breast cancer tissue using TA367286 (SPATA5L1 Antibody) at dilution 1/20, treated with synthetic peptide. (Original magnification: $\times 200$)