

Product datasheet for **TA367285**

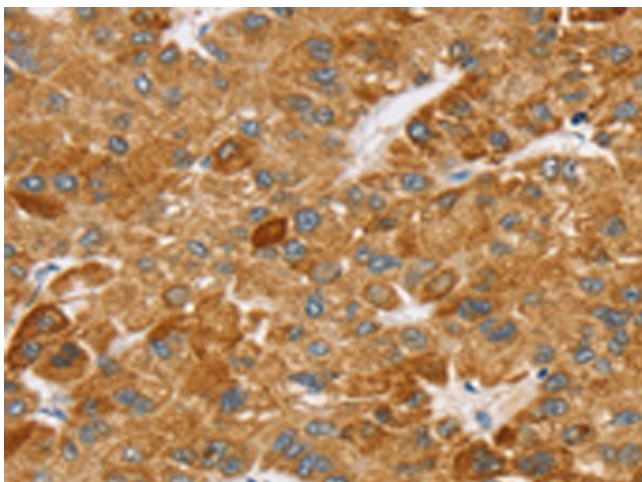
SPARCL1 Rabbit Polyclonal Antibody

Product data:

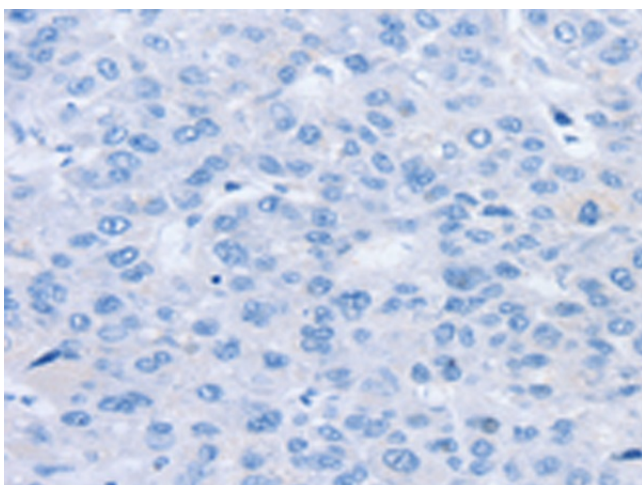
Product Type:	Primary Antibodies
Applications:	IHC
Recommended Dilution:	IHC: 25-100 Positive control: Human liver cancer Predicted cell location: Cytoplasm
Reactivity:	Human
Host:	Rabbit
Isotype:	IgG
Clonality:	Polyclonal
Immunogen:	Synthetic peptide of human SPARCL1
Formulation:	pH7.4 PBS, 0.05% NaN ₃ , 40% Glycerol
Concentration:	lot specific
Purification:	Antigen affinity purification
Conjugation:	Unconjugated
Storage:	Store at -20°C.
Stability:	1 year
Gene Name:	SPARC like 1
Database Link:	Entrez Gene 8404 Human Q14515
Background:	SPARCL1 also known as high endothelial venule protein (Hevin) or MAST9, is a 664 amino acid member of the SPARC family of proteins. Highly expressed in lymph node, heart, lung, brain, skeletal muscle, ovary, colon and small intestine, SPARCL1 is a secreted protein that contains one EF-hand domain, one follistatin-like
Synonyms:	hevin; mast9; PIG33; SC1



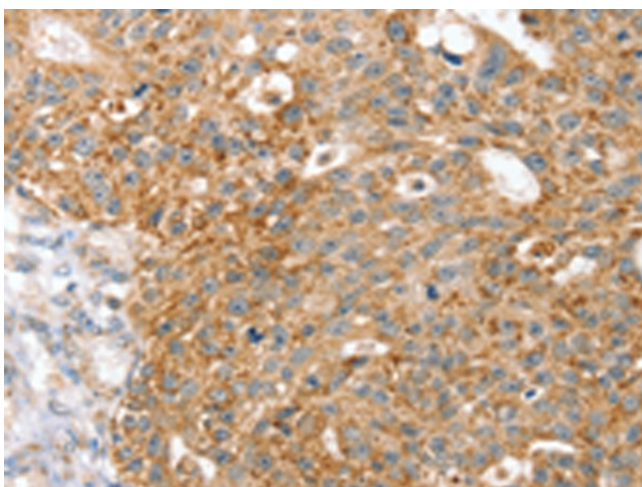
[View online »](#)

Product images:

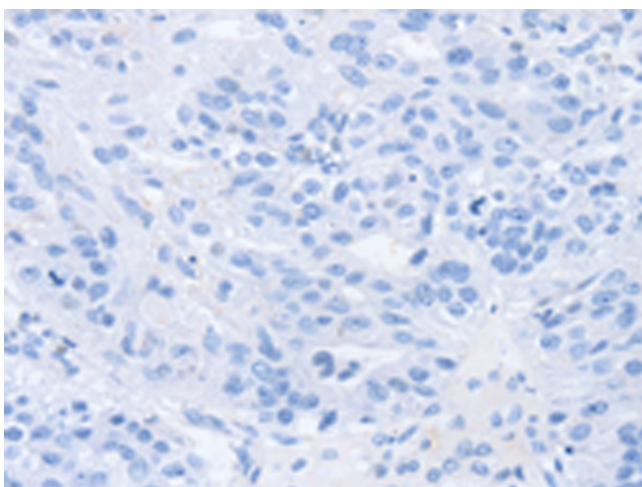
Immunohistochemistry of paraffin-embedded Human liver cancer tissue using TA367285 (SPARCL1 Antibody) at dilution 1/25 (Original magnification: $\times 200$)



Immunohistochemistry of paraffin-embedded Human liver cancer tissue using TA367285 (SPARCL1 Antibody) at dilution 1/25, treated with synthetic peptide. (Original magnification: $\times 200$)



Immunohistochemistry of paraffin-embedded Human breast cancer tissue using TA367285 (SPARCL1 Antibody) at dilution 1/25 (Original magnification: $\times 200$)



Immunohistochemistry of paraffin-embedded Human breast cancer tissue using TA367285 (SPARCL1 Antibody) at dilution 1/25, treated with synthetic peptide. (Original magnification: $\times 200$)