

## Product datasheet for **TA367279**

### SIK1B Rabbit Polyclonal Antibody

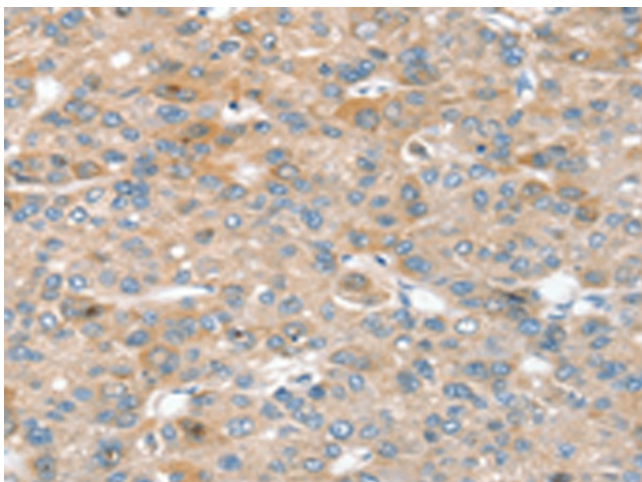
#### Product data:

Product Type:	Primary Antibodies
Applications:	IHC
Recommended Dilution:	IHC: 25-100 Positive control: Human liver cancer Predicted cell location: Cytoplasm or Nucleus
Reactivity:	Human, Mouse, Rat
Host:	Rabbit
Isotype:	IgG
Clonality:	Polyclonal
Immunogen:	Synthetic peptide of human SIK1
Formulation:	pH7.4 PBS, 0.05% NaN <sub>3</sub> , 40% Glycerol
Concentration:	lot specific
Purification:	Antigen affinity purification
Conjugation:	Unconjugated
Storage:	Store at -20°C.
Stability:	1 year
Gene Name:	salt inducible kinase 1B (putative)
Database Link:	<a href="#">Entrez Gene 102724428 Human P57059</a>

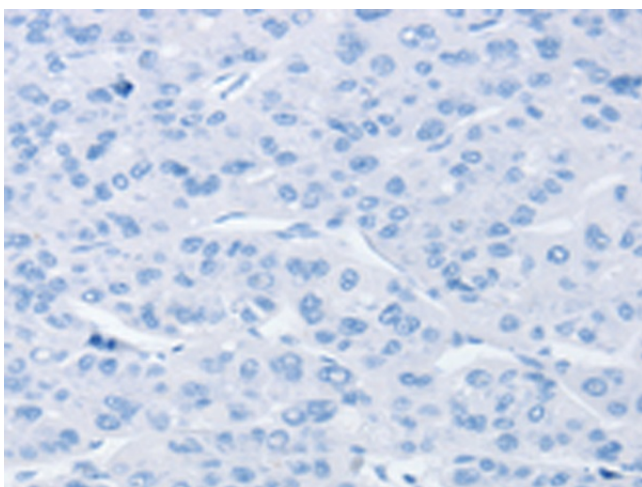
**Background:** SIK1 (salt-inducible kinase 1), also known as SNF1LK or MSK, is a 783 amino acid protein that contains one UBA domain and one protein kinase domain and belongs to the Ser/Thr protein kinase family. Localized to both the nucleus and the cytoplasm, SIK1 uses magnesium as a cofactor to catalyze the ATP-dependent phosphorylation of target proteins and is thought to be important for the early stages of skeletal muscle growth and myocardial cell differentiation. Additionally, SIK1 has a potential role in regulation of the G2/M cell cycle transition, as well as in inhibitory control of CREB protein function.



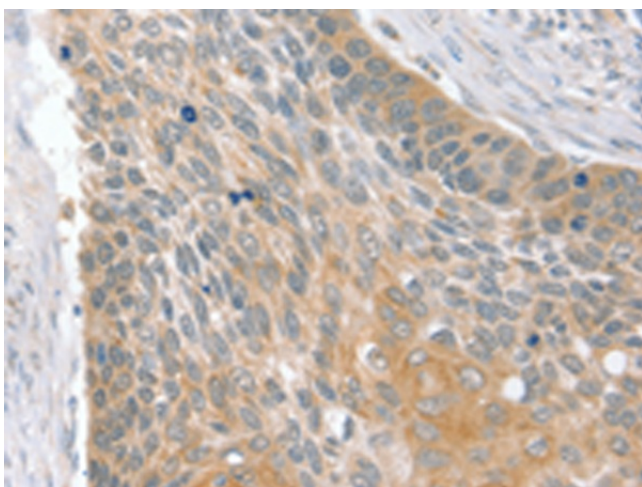
[View online »](#)

**Product images:**

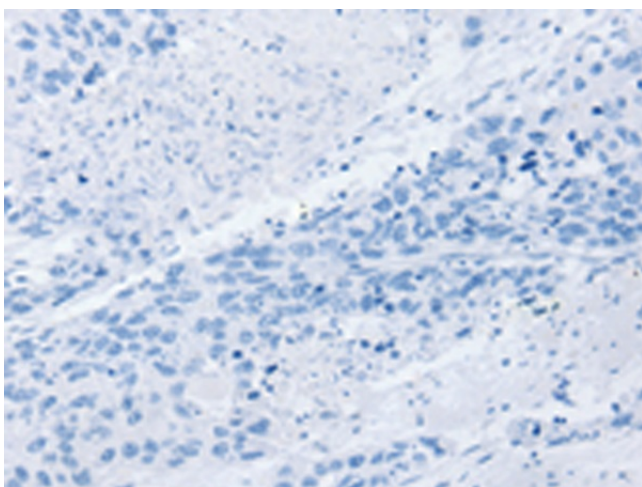
Immunohistochemistry of paraffin-embedded Human liver cancer tissue using TA367279 (SIK1 Antibody) at dilution 1/30 (Original magnification: ×200)



Immunohistochemistry of paraffin-embedded Human liver cancer tissue using TA367279 (SIK1 Antibody) at dilution 1/30, treated with synthetic peptide. (Original magnification: ×200)



Immunohistochemistry of paraffin-embedded Human esophagus cancer tissue using TA367279 (SIK1 Antibody) at dilution 1/30 (Original magnification:  $\times 200$ )



Immunohistochemistry of paraffin-embedded Human esophagus cancer tissue using TA367279 (SIK1 Antibody) at dilution 1/30, treated with synthetic peptide. (Original magnification:  $\times 200$ )