

Product datasheet for **TA367265S**

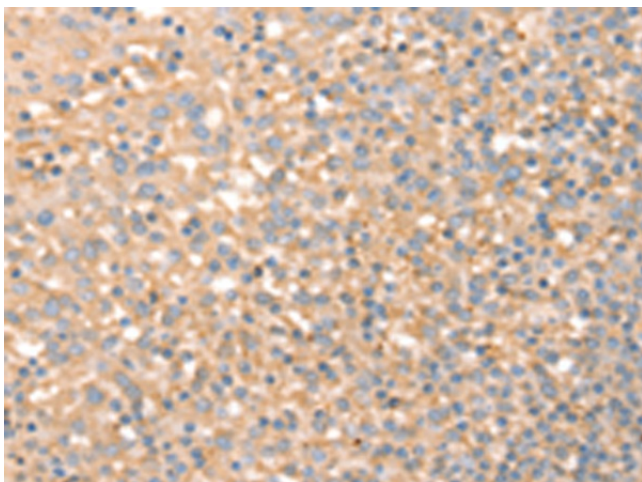
SLC4A7 Rabbit Polyclonal Antibody

Product data:

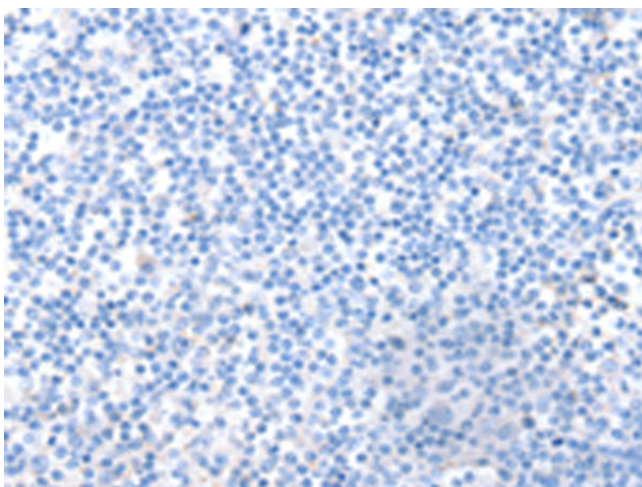
| | |
|-----------------------|--|
| Product Type: | Primary Antibodies |
| Applications: | IHC |
| Recommended Dilution: | IHC: 25-100 Positive control: Human tonsil Predicted cell location: Cytoplasm or Cell membrane |
| Reactivity: | Human, Mouse, Rat |
| Host: | Rabbit |
| Isotype: | IgG |
| Clonality: | Polyclonal |
| Immunogen: | Synthetic peptide of human SLC4A7 |
| Formulation: | pH7.4 PBS, 0.05% NaN ₃ , 40% Glycerol |
| Purification: | Antigen affinity purification |
| Conjugation: | Unconjugated |
| Storage: | Store at -20°C. |
| Stability: | 1 year |
| Gene Name: | solute carrier family 4 member 7 |
| Database Link: | Entrez Gene 9497 Human Q9Y6M7 |
| Background: | This locus encodes a sodium bicarbonate cotransporter. The encoded transmembrane protein appears to transport sodium and bicarbonate ions in a 1:1 ratio, and is thus considered an electroneutral cotransporter. The encoded protein likely plays a critical role in regulation of intracellular pH involved in visual and auditory sensory transmission. Alternatively spliced transcript variants encoding distinct isoforms have been described. |
| Synonyms: | BT; DKFZp686H168; NBC2; NBC2B; NBC3; SBC2; SLC4A6 |



[View online »](#)

Product images:

Immunohistochemistry of paraffin-embedded Human tonsil tissue using [TA367265] (SLC4A7 Antibody) at dilution 1/20 (Original magnification: ×200)



Immunohistochemistry of paraffin-embedded Human tonsil tissue using [TA367265] (SLC4A7 Antibody) at dilution 1/20, treated with synthetic peptide. (Original magnification: ×200)