

## Product datasheet for **TA367265**

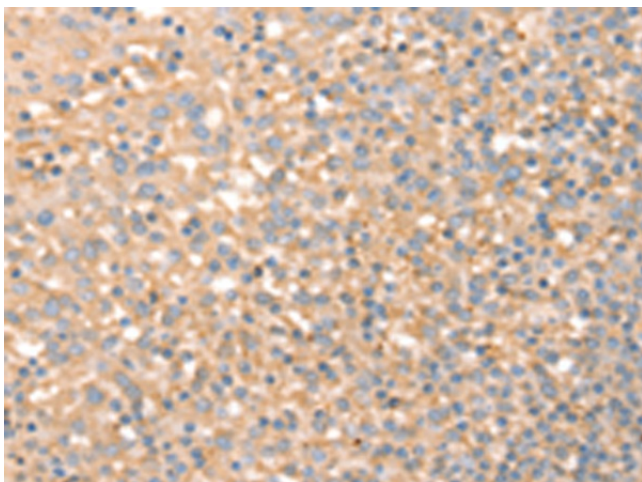
### SLC4A7 Rabbit Polyclonal Antibody

#### Product data:

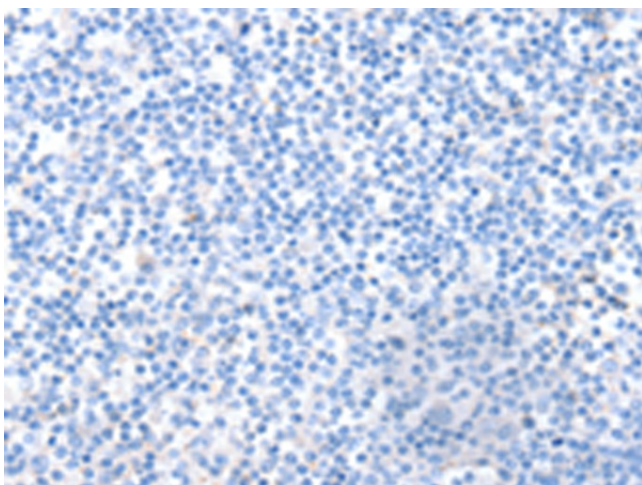
Product Type:	Primary Antibodies
Applications:	IHC
Recommended Dilution:	IHC: 25-100 Positive control: Human tonsil Predicted cell location: Cytoplasm or Cell membrane
Reactivity:	Human, Mouse, Rat
Host:	Rabbit
Isotype:	IgG
Clonality:	Polyclonal
Immunogen:	Synthetic peptide of human SLC4A7
Formulation:	pH7.4 PBS, 0.05% NaN <sub>3</sub> , 40% Glycerol
Concentration:	lot specific
Purification:	Antigen affinity purification
Conjugation:	Unconjugated
Storage:	Store at -20°C.
Stability:	1 year
Gene Name:	solute carrier family 4 member 7
Database Link:	<a href="#">Entrez Gene 9497 Human Q9Y6M7</a>
Background:	This locus encodes a sodium bicarbonate cotransporter. The encoded transmembrane protein appears to transport sodium and bicarbonate ions in a 1:1 ratio, and is thus considered an electroneutral cotransporter. The encoded protein likely plays a critical role in regulation of intracellular pH involved in visual and auditory sensory transmission. Alternatively spliced transcript variants encoding distinct isoforms have been described.
Synonyms:	BT; DKFZp686H168; NBC2; NBC2B; NBC3; SBC2; SLC4A6



[View online »](#)

**Product images:**

Immunohistochemistry of paraffin-embedded Human tonsil tissue using TA367265 (SLC4A7 Antibody) at dilution 1/20 (Original magnification: ×200)



Immunohistochemistry of paraffin-embedded Human tonsil tissue using TA367265 (SLC4A7 Antibody) at dilution 1/20, treated with synthetic peptide. (Original magnification: ×200)