

## Product datasheet for **TA367264**

### SLC43A2 Rabbit Polyclonal Antibody

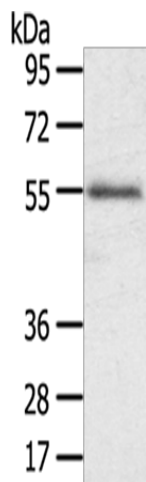
#### Product data:

Product Type:	Primary Antibodies
Applications:	WB
Recommended Dilution:	WB: 200-1000 WB positive control: Human normal stomach tissue
Reactivity:	Human, Mouse
Host:	Rabbit
Isotype:	IgG
Clonality:	Polyclonal
Immunogen:	Synthetic peptide of human SLC43A2
Formulation:	pH7.4 PBS, 0.05% NaN <sub>3</sub> , 40% Glycerol
Concentration:	lot specific
Purification:	Antigen affinity purification
Conjugation:	Unconjugated
Storage:	Store at -20°C.
Stability:	1 year
Predicted Protein Size:	63 kDa
Gene Name:	solute carrier family 43 member 2
Database Link:	<a href="#">Entrez Gene 124935 Human Q8N370</a>
Background:	SLC43A2 (solute carrier family 43, member 2), also known as LAT4 or PP7664, is a 569 amino acid multi-pass membrane protein that belongs to the SLC43A solute transporter family. Expressed in a variety of tissues with highest expression in kidney and placenta, SLC43A2 functions as a sodium- and chloride-independent transport channel protein that facilitates the transport of large neutral amino acids across membranes. Overexpression of SLC43A2 is associated with head and neck carcinomas, implicating SLC43A2 as a tumor-associated protein.
Synonyms:	FLJ23848; LAT4; MGC34680



[View online »](#)

## Product images:



Gel: 8%SDS-PAGE

Lysate: 40  $\mu$ g

Lane: Human normal stomach tissue

Primary antibody: TA367264 (SLC43A2 Antibody)  
at dilution 1/200

Secondary antibody: Goat anti rabbit IgG at  
1/8000 dilution

Exposure time: 1 minute