

## Product datasheet for **TA367263S**

### SLC39A5 Rabbit Polyclonal Antibody

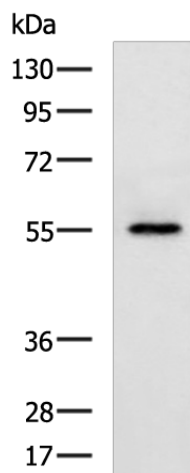
#### Product data:

Product Type:	Primary Antibodies
Applications:	IHC, WB
Recommended Dilution:	WB: 500-2000 WB positive control: Human placenta tissue lysate IHC: 25-50 Positive control: Human liver cancer Predicted cell location: Cell membrane
Reactivity:	Human
Host:	Rabbit
Isotype:	IgG
Clonality:	Polyclonal
Immunogen:	Synthetic peptide of human SLC39A5
Formulation:	pH7.4 PBS, 0.05% NaN <sub>3</sub> , 40% Glycerol
Purification:	Antigen affinity purification
Conjugation:	Unconjugated
Storage:	Store at -20°C.
Stability:	1 year
Predicted Protein Size:	56 kDa
Gene Name:	solute carrier family 39 member 5
Database Link:	<a href="#">Entrez Gene 283375 Human Q6ZMH5</a>
Background:	The protein encoded by this gene belongs to the ZIP family of zinc transporters that transport zinc into cells from outside, and play a crucial role in controlling intracellular zinc levels. Zinc is an essential cofactor for many enzymes and proteins involved in gene transcription, growth, development and differentiation. Mutations in this gene have been associated with autosomal dominant high myopia (MYP24). Alternatively spliced transcript variants have been found for this gene.
Synonyms:	LZT-Hs7; MGC34778; ZIP-5; ZIP5

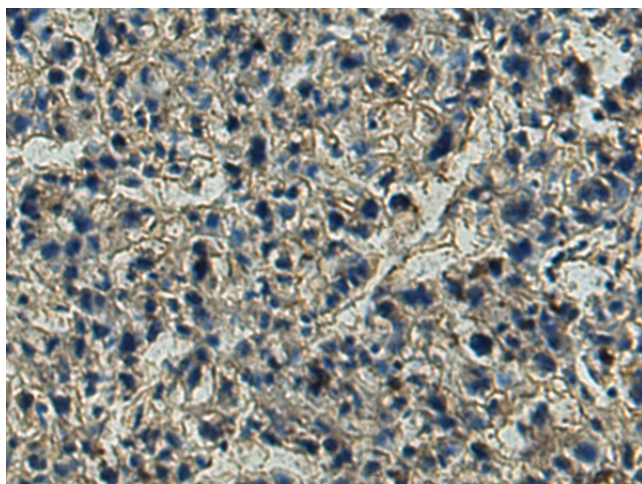


[View online »](#)

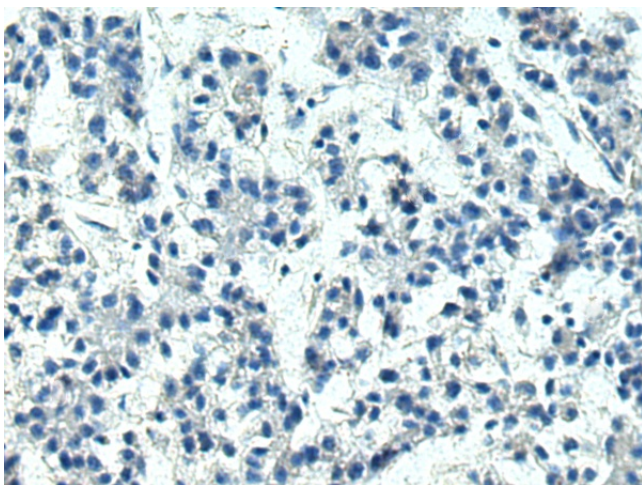
## Product images:



Gel: 8%SDS-PAGE  
Lysate: 40  $\mu$ g  
Lane: Human placenta tissue lysate  
Primary antibody: [TA367263] (SLC39A5 Antibody) at dilution 1/600  
Secondary antibody: Goat anti rabbit IgG at 1/5000 dilution  
Exposure time: 2 minutes



Immunohistochemistry of paraffin-embedded Human liver cancer tissue using [TA367263] (SLC39A5 Antibody) at dilution 1/25 (Original magnification:  $\times$ 200)



Immunohistochemistry of paraffin-embedded Human liver cancer tissue using [TA367263] (SLC39A5 Antibody) at dilution 1/25, treated with synthetic peptide. (Original magnification:  $\times 200$ )