

Product datasheet for **TA367262**

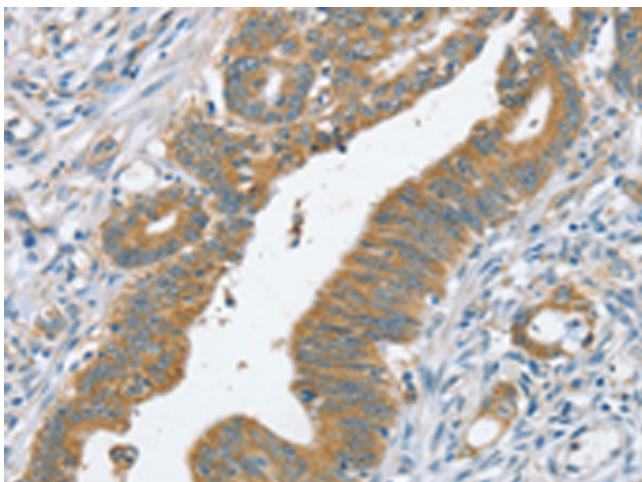
SLC39A3 Rabbit Polyclonal Antibody

Product data:

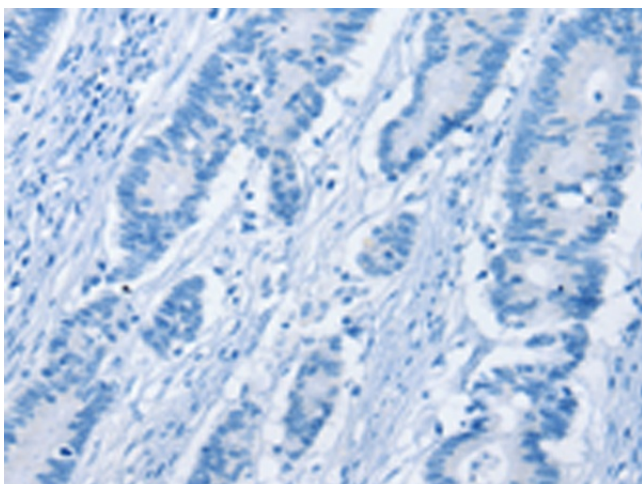
| | |
|-----------------------|--|
| Product Type: | Primary Antibodies |
| Applications: | IHC |
| Recommended Dilution: | IHC: 20-100 Positive control: Human colon cancer Predicted cell location: Cytoplasm |
| Reactivity: | Human, Mouse, Rat |
| Host: | Rabbit |
| Isotype: | IgG |
| Clonality: | Polyclonal |
| Immunogen: | Synthetic peptide of human SLC39A3 |
| Formulation: | pH7.4 PBS, 0.05% NaN ₃ , 40% Glycerol |
| Concentration: | lot specific |
| Purification: | Antigen affinity purification |
| Conjugation: | Unconjugated |
| Storage: | Store at -20°C. |
| Stability: | 1 year |
| Gene Name: | solute carrier family 39 member 3 |
| Database Link: | Entrez Gene 29985 Human Q9BRY0 |
| Background: | SLC39A3 (solute carrier family 39, member 2), is a 314 amino acid acid multi-pass membrane protein that localizes to the cell membrane and belongs to the ZIP family of zinc transporters. Two isoforms of ZIP3 exist as a result of alternative splicing events. ZIP3 is involved in translocation of extracellular zinc into a variety of cell types. Tumorigenic prostate epithelial cells contain less intracellular zinc than non-tumorigenic prostate epithelial cells. Loss of the ability to maintain zinc accumulation may be caused by the decrease in the ZIP1 protein expression and the intracellular redistribution of ZIP3. |
| Synonyms: | ZIP-3; ZIP3 |



[View online »](#)

Product images:

Immunohistochemistry of paraffin-embedded Human colon cancer tissue using TA367262 (SLC39A3 Antibody) at dilution 1/20 (Original magnification: $\times 200$)



Immunohistochemistry of paraffin-embedded Human colon cancer tissue using TA367262 (SLC39A3 Antibody) at dilution 1/20, treated with synthetic peptide. (Original magnification: $\times 200$)