

## Product datasheet for **TA367260S**

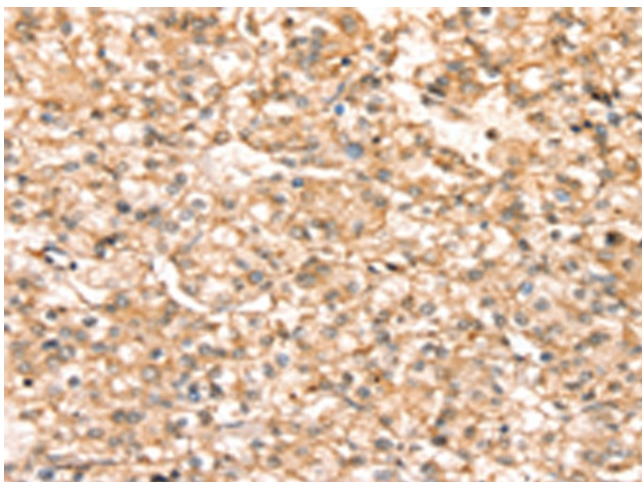
### SLC25A38 Rabbit Polyclonal Antibody

#### Product data:

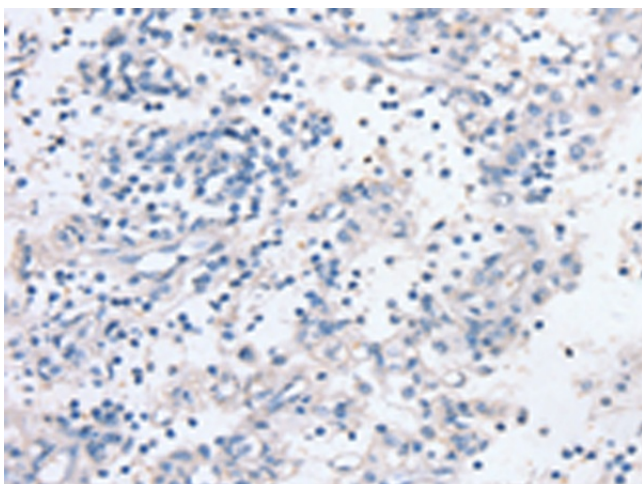
Product Type:	Primary Antibodies
Applications:	IHC
Recommended Dilution:	IHC: 25-100 Positive control: Human prostate cancer Predicted cell location: Cytoplasm
Reactivity:	Human
Host:	Rabbit
Isotype:	IgG
Clonality:	Polyclonal
Immunogen:	Synthetic peptide of human SLC25A38
Formulation:	pH7.4 PBS, 0.05% NaN <sub>3</sub> , 40% Glycerol
Purification:	Antigen affinity purification
Conjugation:	Unconjugated
Storage:	Store at -20°C.
Stability:	1 year
Gene Name:	solute carrier family 25 member 38
Database Link:	<a href="#">Entrez Gene 54977 Human Q96DW6</a>
Background:	This gene is a member of the mitochondrial carrier family. The encoded protein is required during erythropoiesis and is important for the biosynthesis of heme. Mutations in this gene are the cause of autosomal congenital sideroblastic anemia.
Synonyms:	FLJ20551; FLJ22703

[View online »](#)

## Product images:



Immunohistochemistry of paraffin-embedded Human prostate cancer tissue using [TA367260] (SLC25A38 Antibody) at dilution 1/20 (Original magnification: ×200)



Immunohistochemistry of paraffin-embedded Human prostate cancer tissue using [TA367260] (SLC25A38 Antibody) at dilution 1/20, treated with synthetic peptide. (Original magnification: ×200)