

## Product datasheet for **TA367256**

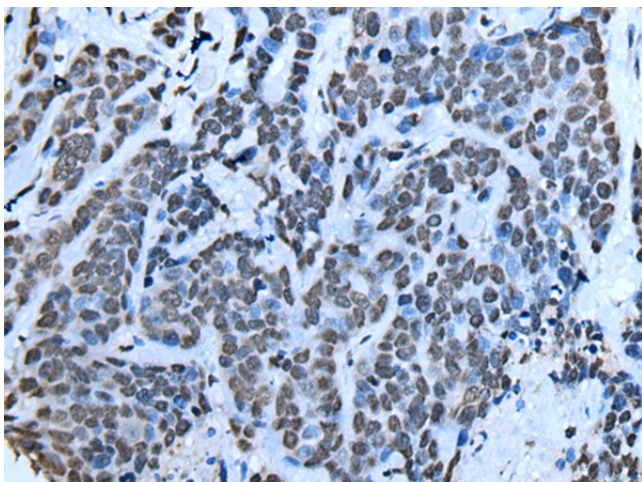
### SIN3B Rabbit Polyclonal Antibody

#### Product data:

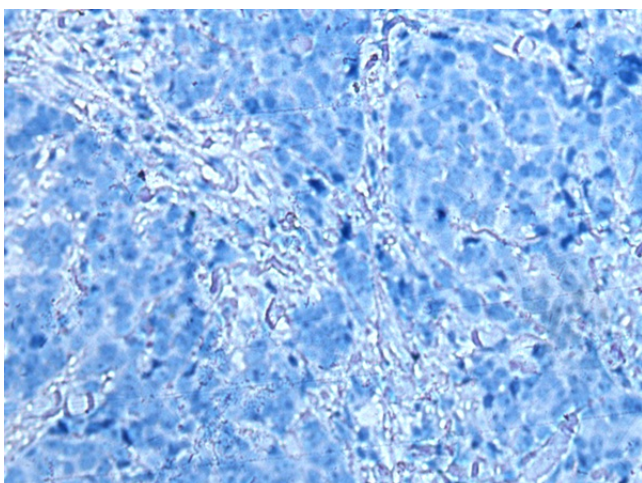
Product Type:	Primary Antibodies
Applications:	IHC
Recommended Dilution:	IHC: 25-100 Positive control: Human thyroid cancer Predicted cell location: Nucleus
Reactivity:	Human
Host:	Rabbit
Isotype:	IgG
Clonality:	Polyclonal
Immunogen:	Synthetic peptide of human SIN3B
Formulation:	pH7.4 PBS, 0.05% NaN <sub>3</sub> , 40% Glycerol
Concentration:	lot specific
Purification:	Antigen affinity purification
Conjugation:	Unconjugated
Storage:	Store at -20°C.
Stability:	1 year
Gene Name:	SIN3 transcription regulator family member B
Database Link:	<a href="#">Entrez Gene 23309 Human O75182</a>
Background:	Acts as a transcriptional repressor. Interacts with MXI1 to repress MYC responsive genes and antagonize MYC oncogenic activities. Interacts with MAD-MAX heterodimers by binding to MAD. The heterodimer then represses transcription by tethering SIN3B to DNA. Also forms a complex with FOXK1 which represses transcription (By similarity).
Synonyms:	KIAA0700



[View online »](#)

**Product images:**

Immunohistochemistry of paraffin-embedded Human thyroid cancer tissue using TA367256 (SIN3B Antibody) at dilution 1/30 (Original magnification:  $\times 200$ )



Immunohistochemistry of paraffin-embedded Human thyroid cancer tissue using TA367256 (SIN3B Antibody) at dilution 1/30, treated with synthetic peptide. (Original magnification:  $\times 200$ )