

## Product datasheet for **TA367254S**

### SIGLEC10 Rabbit Polyclonal Antibody

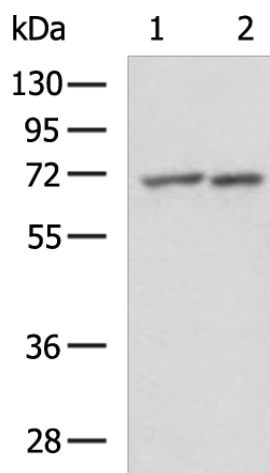
#### Product data:

Product Type:	Primary Antibodies
Applications:	IHC, WB
Recommended Dilution:	WB: 500-2000 WB positive control: Hela and SKOV3 cell lysates IHC: 50-100 Positive control: Human tonsil Predicted cell location: Cytoplasm
Reactivity:	Human
Host:	Rabbit
Isotype:	IgG
Clonality:	Polyclonal
Immunogen:	Synthetic peptide of human SIGLEC10
Formulation:	pH7.4 PBS, 0.05% NaN <sub>3</sub> , 40% Glycerol
Purification:	Antigen affinity purification
Conjugation:	Unconjugated
Storage:	Store at -20°C.
Stability:	1 year
Predicted Protein Size:	77 kDa
Gene Name:	sialic acid binding Ig like lectin 10
Database Link:	<a href="#">Entrez Gene 89790 Human Q96LC7</a>
Background:	SIGLECs are members of the immunoglobulin superfamily that are expressed on the cell surface. Most SIGLECs have 1 or more cytoplasmic immune receptor tyrosine-based inhibitory motifs, or ITIMs. SIGLECs are typically expressed on cells of the innate immune system, with the exception of the B-cell expressed SIGLEC6.
Synonyms:	MGC126774; PRO940; SIGLEC-10; SLG2

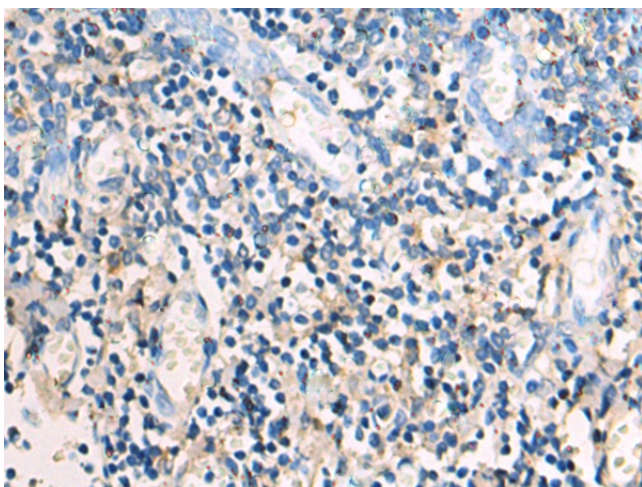


[View online »](#)

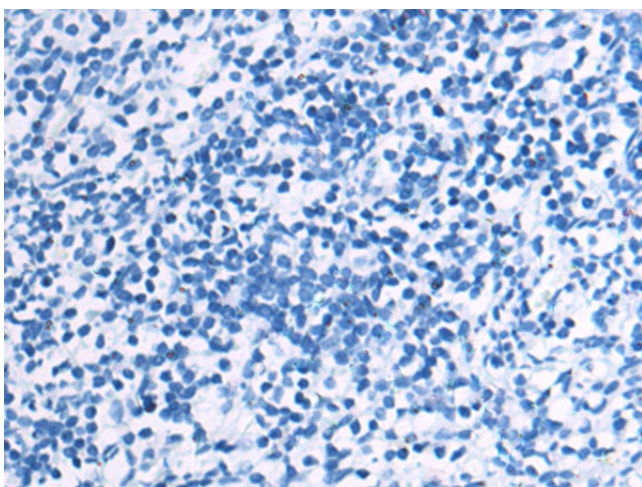
## Product images:



Gel: 8%SDS-PAGE  
Lysate: 40  $\mu$ g  
Lane 1-2: HeLa and SKOV3 cell lysates  
Primary antibody: [TA367254] (SIGLEC10 Antibody) at dilution 1/650  
Secondary antibody: Goat anti rabbit IgG at 1/5000 dilution  
Exposure time: 1 minute



Immunohistochemistry of paraffin-embedded Human tonsil tissue using [TA367254] (SIGLEC10 Antibody) at dilution 1/50 (Original magnification:  $\times$ 200)



Immunohistochemistry of paraffin-embedded Human tonsil tissue using [TA367254] (SIGLEC10 Antibody) at dilution 1/50, treated with synthetic peptide. (Original magnification:  $\times 200$ )