

Product datasheet for **TA367253**

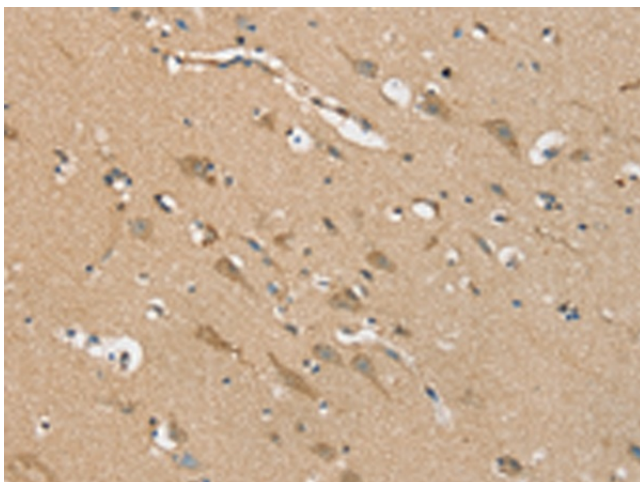
Nestin (NES) Rabbit Polyclonal Antibody

Product data:

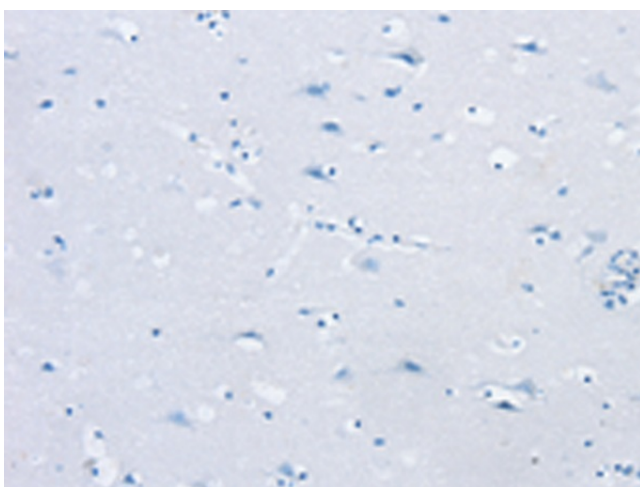
Product Type:	Primary Antibodies
Applications:	IHC
Recommended Dilution:	IHC: 20-100 Positive control: Human brain Predicted cell location: Cytoplasm
Reactivity:	Human
Host:	Rabbit
Isotype:	IgG
Clonality:	Polyclonal
Immunogen:	Synthetic peptide of human NES
Formulation:	pH7.4 PBS, 0.05% NaN ₃ , 40% Glycerol
Concentration:	lot specific
Purification:	Antigen affinity purification
Conjugation:	Unconjugated
Storage:	Store at -20°C.
Stability:	1 year
Gene Name:	nestin
Database Link:	Entrez Gene 10763 Human P48681
Background:	This gene encodes a member of the intermediate filament protein family and is expressed primarily in nerve cells. Required for brain and eye development. Promotes the disassembly of phosphorylated vimentin intermediate filaments (IF) during mitosis and may play a role in the trafficking and distribution of IF proteins and other cellular factors to daughter cells during progenitor cell division.
Synonyms:	FLJ21841; Nbla00170; nestin



[View online »](#)

Product images:

Immunohistochemistry of paraffin-embedded Human brain tissue using TA367253 (NES Antibody) at dilution 1/20 (Original magnification: ×200)



Immunohistochemistry of paraffin-embedded Human brain tissue using TA367253 (NES Antibody) at dilution 1/20, treated with synthetic peptide. (Original magnification: ×200)