

## Product datasheet for **TA367251S**

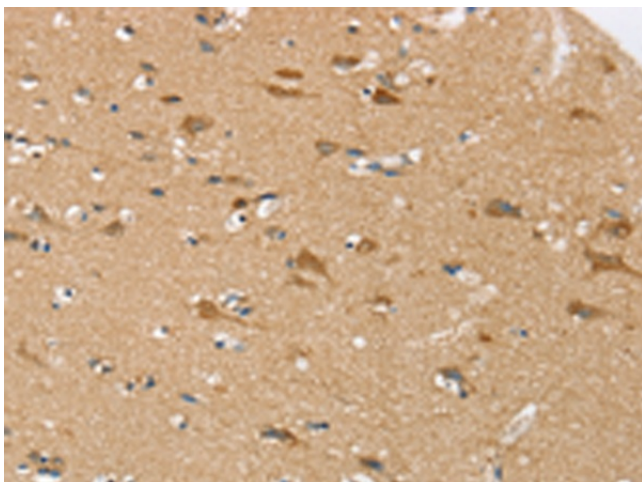
### SEZ6L Rabbit Polyclonal Antibody

#### Product data:

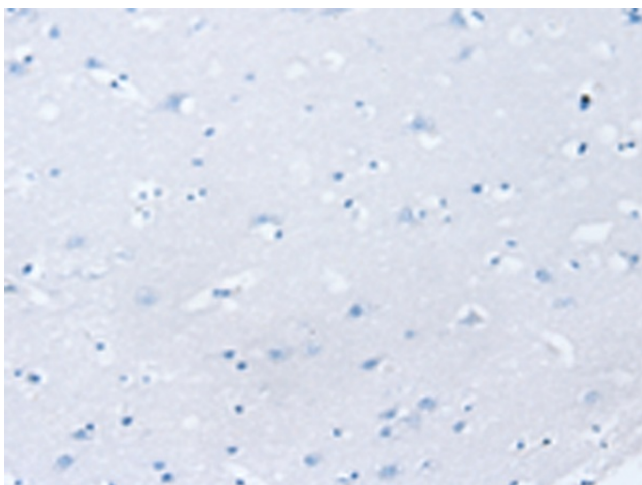
Product Type:	Primary Antibodies
Applications:	IHC
Recommended Dilution:	IHC: 25-100 Positive control: Human brain Predicted cell location: Cytoplasm
Reactivity:	Human, Mouse
Host:	Rabbit
Isotype:	IgG
Clonality:	Polyclonal
Immunogen:	Synthetic peptide of human SEZ6L
Formulation:	pH7.4 PBS, 0.05% NaN <sub>3</sub> , 40% Glycerol
Purification:	Antigen affinity purification
Conjugation:	Unconjugated
Storage:	Store at -20°C.
Stability:	1 year
Gene Name:	seizure related 6 homolog like
Database Link:	<a href="#">Entrez Gene 23544 Human Q9BYH1</a>
Background:	May contribute to specialized endoplasmic reticulum functions in neurons.
Synonyms:	KIAA0927



[View online »](#)

**Product images:**

Immunohistochemistry of paraffin-embedded Human brain tissue using [TA367251] (SEZ6L Antibody) at dilution 1/30 (Original magnification: ×200)



Immunohistochemistry of paraffin-embedded Human brain tissue using [TA367251] (SEZ6L Antibody) at dilution 1/30, treated with synthetic peptide. (Original magnification: ×200)