

Product datasheet for **TA367250S**

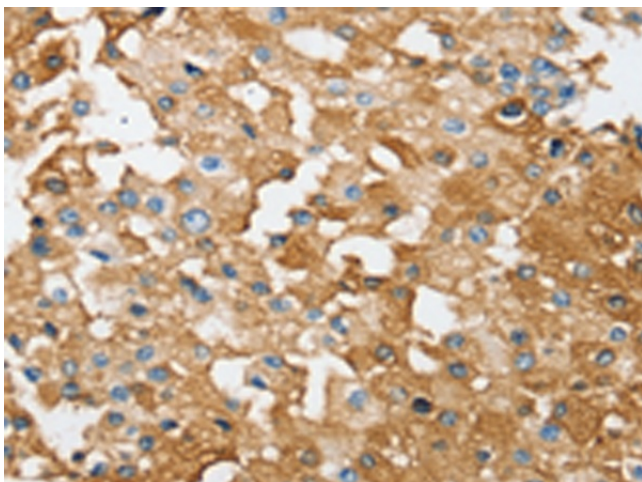
SESN2 Rabbit Polyclonal Antibody

Product data:

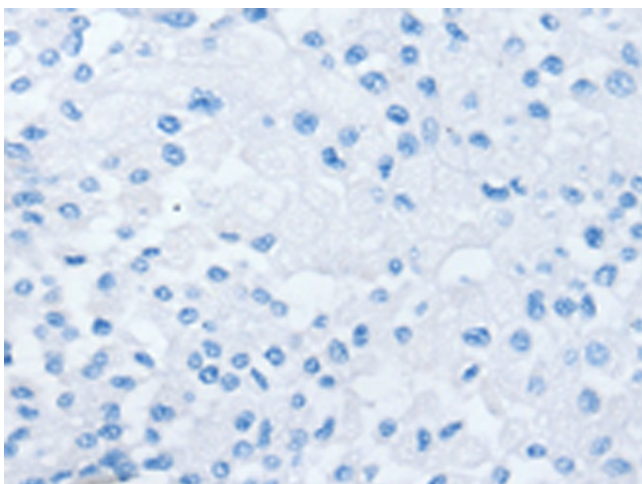
Product Type:	Primary Antibodies
Applications:	IHC
Recommended Dilution:	IHC: 25-100 Positive control: Human prostate cancer Predicted cell location: Cytoplasm
Reactivity:	Human, Mouse
Host:	Rabbit
Isotype:	IgG
Clonality:	Polyclonal
Immunogen:	Synthetic peptide of human SESN2
Formulation:	pH7.4 PBS, 0.05% NaN ₃ , 40% Glycerol
Purification:	Antigen affinity purification
Conjugation:	Unconjugated
Storage:	Store at -20°C.
Stability:	1 year
Gene Name:	sestrin 2
Database Link:	Entrez Gene 83667 Human P58004
Background:	This gene encodes a member of the sestrin family of PA26-related proteins. The encoded protein may function in the regulation of cell growth and survival. This protein may be involved in cellular response to different stress conditions.
Synonyms:	DKFZp761M0212; DKFZp761M02121; HI95; SES2; SEST2



[View online »](#)

Product images:

Immunohistochemistry of paraffin-embedded Human prostate cancer tissue using [TA367250] (SESN2 Antibody) at dilution 1/35 (Original magnification: $\times 200$)



Immunohistochemistry of paraffin-embedded Human prostate cancer tissue using [TA367250] (SESN2 Antibody) at dilution 1/35, treated with synthetic peptide. (Original magnification: $\times 200$)