

## Product datasheet for **TA367249**

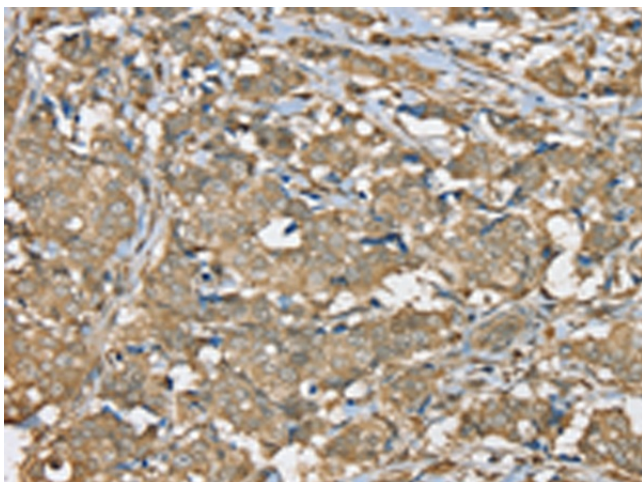
### **SERPINA11 Rabbit Polyclonal Antibody**

#### **Product data:**

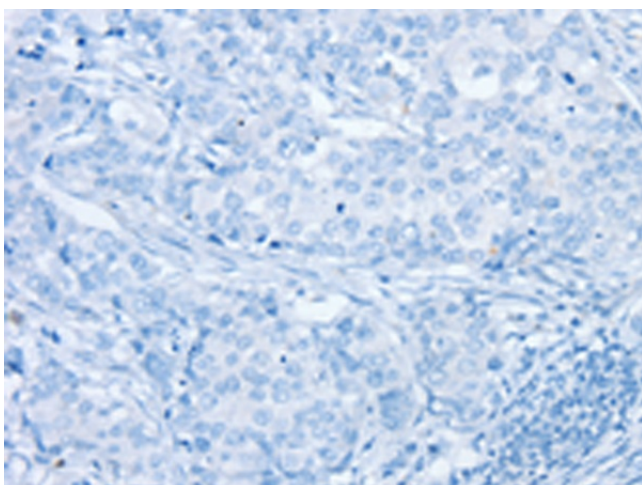
Product Type:	Primary Antibodies
Applications:	IHC
Recommended Dilution:	IHC: 25-100 Positive control: Human breast cancer Predicted cell location: Secreted
Reactivity:	Human, Mouse, Rat
Host:	Rabbit
Isotype:	IgG
Clonality:	Polyclonal
Immunogen:	Synthetic peptide of human SERPINA11
Formulation:	pH7.4 PBS, 0.05% NaN <sub>3</sub> , 40% Glycerol
Concentration:	lot specific
Purification:	Antigen affinity purification
Conjugation:	Unconjugated
Storage:	Store at -20°C.
Stability:	1 year
Gene Name:	serpin family A member 11
Database Link:	<a href="#">Entrez Gene 256394 Human Q86U17</a>
Background:	The protein belongs to the serpin family. SERPINA11 has serine-type endopeptidase inhibitor activity, negative regulation of endopeptidase activity, regulation of proteolysis, serine-type endopeptidase inhibitor activity.
Synonyms:	Serpina11



[View online »](#)

**Product images:**

Immunohistochemistry of paraffin-embedded Human breast cancer tissue using TA367249 (SERPINA11 Antibody) at dilution 1/35 (Original magnification:  $\times 200$ )



Immunohistochemistry of paraffin-embedded Human breast cancer tissue using TA367249 (SERPINA11 Antibody) at dilution 1/35, treated with synthetic peptide. (Original magnification:  $\times 200$ )