

## Product datasheet for **TA367248**

### SERINC3 Rabbit Polyclonal Antibody

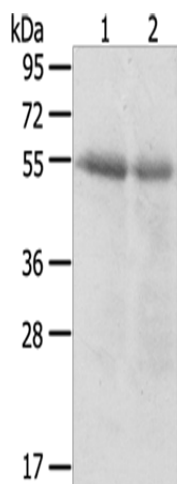
#### Product data:

Product Type:	Primary Antibodies
Applications:	WB
Recommended Dilution:	WB: 200-1000 WB positive control: Human right lung cancer and left lung cancer tissue
Reactivity:	Human, Mouse
Host:	Rabbit
Isotype:	IgG
Clonality:	Polyclonal
Immunogen:	Synthetic peptide of human SERINC3
Formulation:	pH7.4 PBS, 0.05% NaN <sub>3</sub> , 40% Glycerol
Concentration:	lot specific
Purification:	Antigen affinity purification
Conjugation:	Unconjugated
Storage:	Store at -20°C.
Stability:	1 year
Predicted Protein Size:	53 kDa
Gene Name:	serine incorporator 3
Database Link:	<a href="#">Entrez Gene 10955 Human Q13530</a>
Background:	TDE1, tumor differentially expressed protein 1, is a multi-pass membrane protein also known as serine incorporator 3. Also found on the membranes of the Golgi apparatus within cells, TDE1 is highly expressed in neuronal populations but is also found in thymus, kidney, liver and testis. Expression levels of TDE1 in tumors can be as much as tenfold the amount found in normal tissue of the same type. This increased expression implicates TDE1 as being involved in the cellular transformation from normal to malignant tissue.
Synonyms:	AIGP1; DIFF33; SBBI99; TDE; TDE1; TMS-1



[View online »](#)

## Product images:



Gel: 8%SDS-PAGE

Lysate: 40  $\mu$ g

Lane 1-2: Human right lung cancer tissue

Human left lung cancer tissue

Primary antibody: TA367248 (SERINC3 Antibody)  
at dilution 1/200

Secondary antibody: Goat anti rabbit IgG at  
1/8000 dilution

Exposure time: 3 minutes