

## Product datasheet for **TA367247**

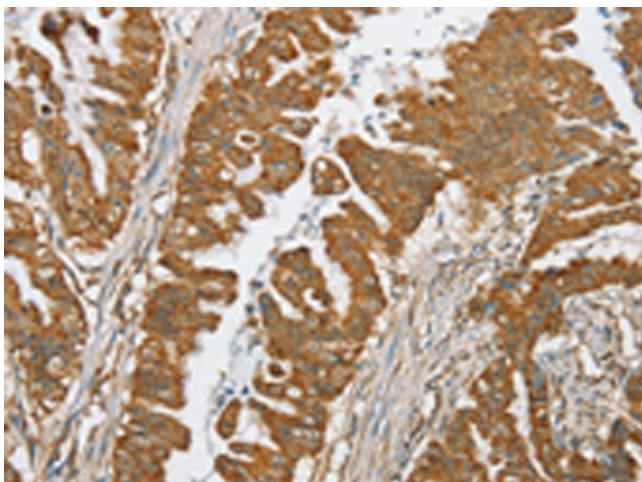
### **SERINC2 Rabbit Polyclonal Antibody**

#### **Product data:**

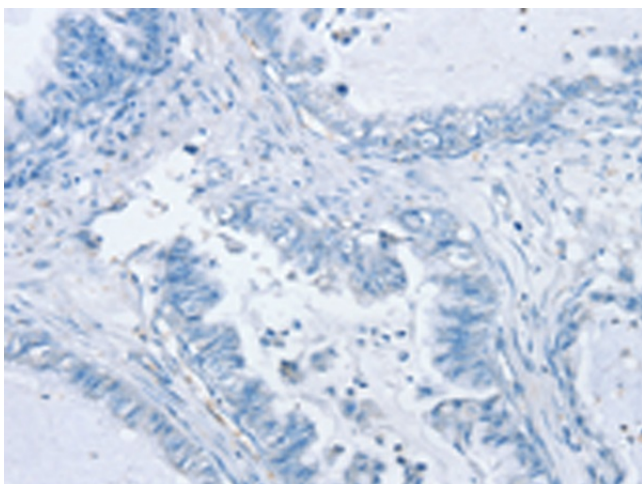
Product Type:	Primary Antibodies
Applications:	IHC
Recommended Dilution:	IHC: 25-100 Positive control: Human esophagus cancer Predicted cell location: Cytoplasm
Reactivity:	Human, Mouse
Host:	Rabbit
Isotype:	IgG
Clonality:	Polyclonal
Immunogen:	Synthetic peptide of human SERINC2
Formulation:	pH7.4 PBS, 0.05% NaN <sub>3</sub> , 40% Glycerol
Concentration:	lot specific
Purification:	Antigen affinity purification
Conjugation:	Unconjugated
Storage:	Store at -20°C.
Stability:	1 year
Gene Name:	serine incorporator 2
Database Link:	<a href="#">Entrez Gene 347735 Human Q96SA4</a>
Background:	SERINC2 involved in phosphatidylserine metabolic process, and positive regulation of transferase activity.
Synonyms:	FKSG84; MGC90340; PRO0899; TDE2; TDE2L



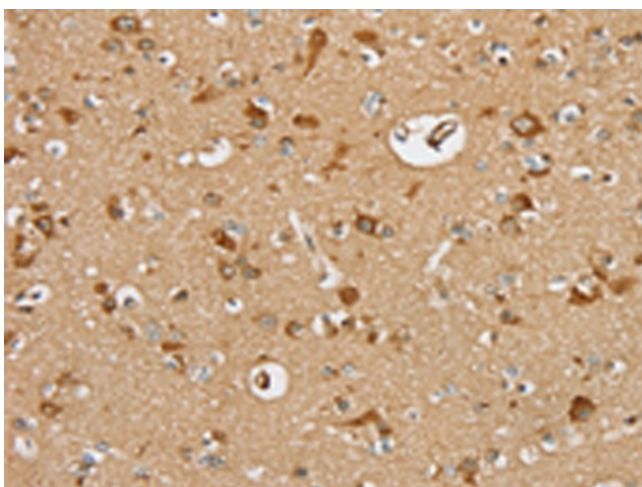
[View online »](#)

**Product images:**


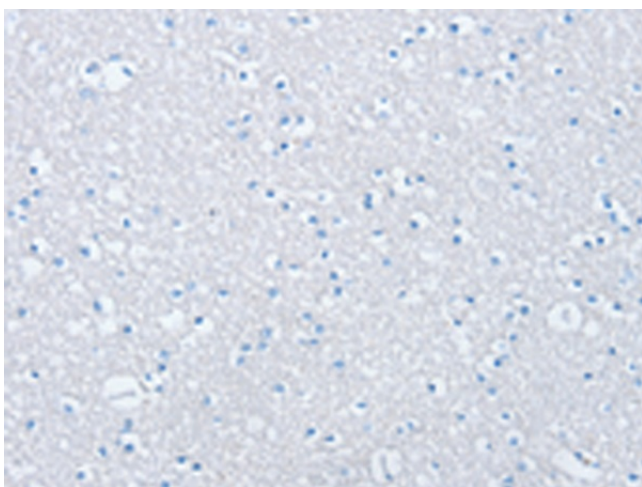
Immunohistochemistry of paraffin-embedded Human esophagus cancer tissue using TA367247 (SERINC2 Antibody) at dilution 1/20 (Original magnification: ×200)



Immunohistochemistry of paraffin-embedded Human esophagus cancer tissue using TA367247 (SERINC2 Antibody) at dilution 1/20, treated with synthetic peptide. (Original magnification: ×200)



Immunohistochemistry of paraffin-embedded Human brain tissue using TA367247 (SERINC2 Antibody) at dilution 1/20 (Original magnification: ×200)



Immunohistochemistry of paraffin-embedded Human brain tissue using TA367247 (SERINC2 Antibody) at dilution 1/20, treated with synthetic peptide. (Original magnification: ×200)