

## Product datasheet for **TA367246**

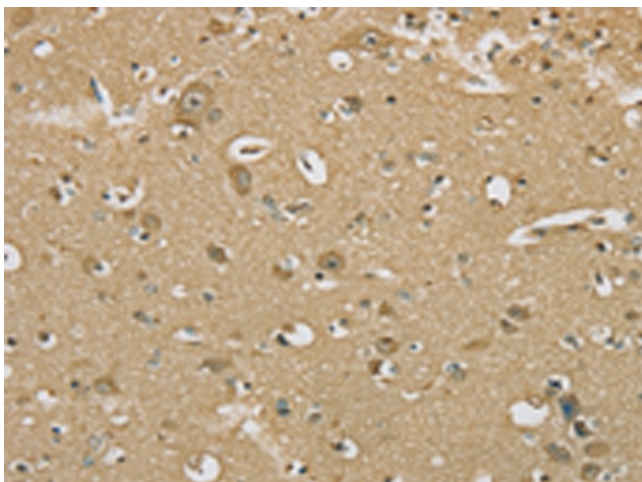
### **SERINC1 Rabbit Polyclonal Antibody**

#### **Product data:**

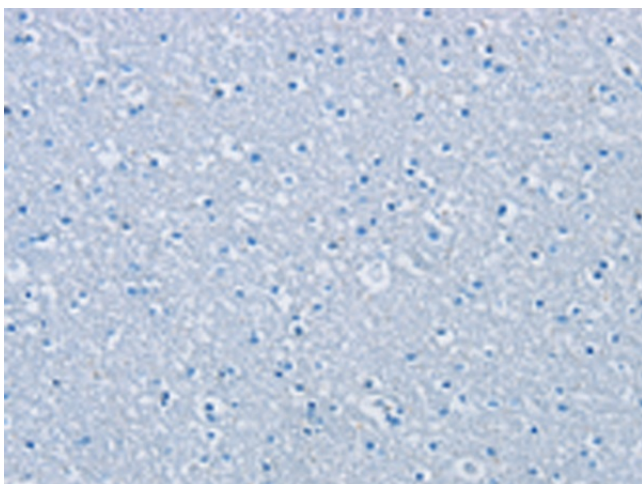
Product Type:	Primary Antibodies
Applications:	IHC
Recommended Dilution:	IHC: 25-100 Positive control: Human brain Predicted cell location: Cytoplasm
Reactivity:	Human
Host:	Rabbit
Isotype:	IgG
Clonality:	Polyclonal
Immunogen:	Synthetic peptide of human SERINC1
Formulation:	pH7.4 PBS, 0.05% NaN <sub>3</sub> , 40% Glycerol
Concentration:	lot specific
Purification:	Antigen affinity purification
Conjugation:	Unconjugated
Storage:	Store at -20°C.
Stability:	1 year
Gene Name:	serine incorporator 1
Database Link:	<a href="#">Entrez Gene 57515 Human Q9NRX5</a>
Background:	Serine incorporator 1 is a protein that in humans is encoded by the SERINC1 gene. Enhances the incorporation of serine into phosphatidylserine and sphingolipids. Interacts with SPTLC1.
Synonyms:	KIAA1253; OTTHUMP00000017112; TDE1L; TDE2; TMS-2



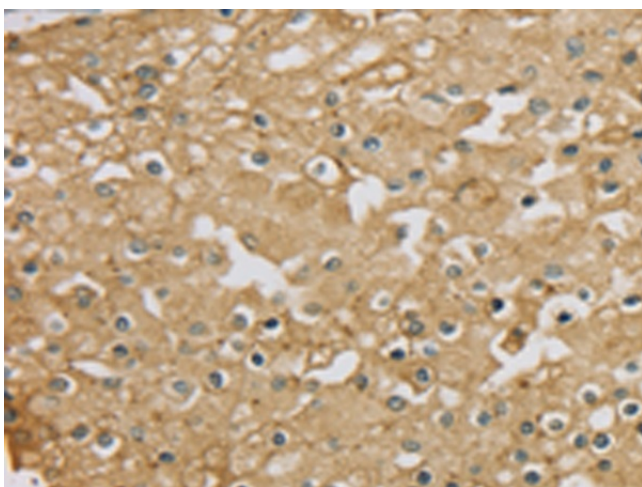
[View online »](#)

**Product images:**

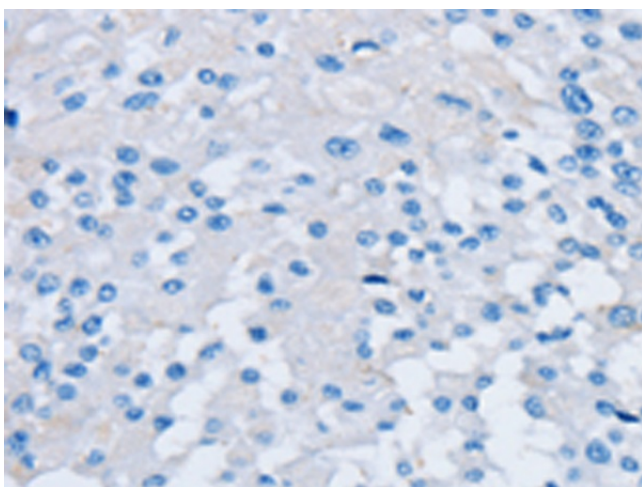
Immunohistochemistry of paraffin-embedded Human brain tissue using TA367246 (SERINC1 Antibody) at dilution 1/30 (Original magnification: ×200)



Immunohistochemistry of paraffin-embedded Human brain tissue using TA367246 (SERINC1 Antibody) at dilution 1/30, treated with synthetic peptide. (Original magnification: ×200)



Immunohistochemistry of paraffin-embedded Human prostate cancer tissue using TA367246 (SERINC1 Antibody) at dilution 1/30 (Original magnification:  $\times 200$ )



Immunohistochemistry of paraffin-embedded Human prostate cancer tissue using TA367246 (SERINC1 Antibody) at dilution 1/30, treated with synthetic peptide. (Original magnification:  $\times 200$ )