

## Product datasheet for **TA367240S**

### SDHB Rabbit Polyclonal Antibody

#### Product data:

Product Type:	Primary Antibodies
Applications:	IHC, WB
Recommended Dilution:	WB: 500-2000 WB positive control: 293T cells and mouse brain tissue, human fetal liver tissue and hepg2 cells, Jurkat cells IHC: 25-100 Positive control: Human thyroid cancer Predicted cell location: Cytoplasm
Reactivity:	Human, Mouse, Rat
Host:	Rabbit
Isotype:	IgG
Clonality:	Polyclonal
Immunogen:	Synthetic peptide of human SDHB
Formulation:	pH7.4 PBS, 0.05% NaN <sub>3</sub> , 40% Glycerol
Purification:	Antigen affinity purification
Conjugation:	Unconjugated
Storage:	Store at -20°C.
Stability:	1 year
Predicted Protein Size:	32 kDa
Gene Name:	succinate dehydrogenase complex iron sulfur subunit B
Database Link:	<a href="#">Entrez Gene 6390 Human P21912</a>



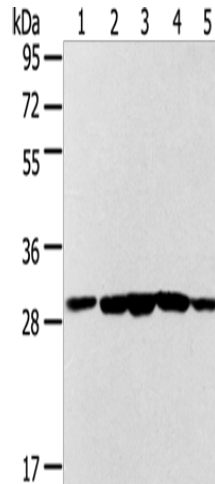
[View online »](#)

**Background:**

Complex II of the respiratory chain, which is specifically involved in the oxidation of succinate, carries electrons from FADH to CoQ. The complex is composed of four nuclear-encoded subunits and is localized in the mitochondrial inner membrane. The iron-sulfur subunit is highly conserved and contains three cysteine-rich clusters which may comprise the iron-sulfur centers of the enzyme. Sporadic and familial mutations in this gene result in paragangliomas and pheochromocytoma, and support a link between mitochondrial dysfunction and tumorigenesis.

**Synonyms:**

FLJ92337; IP; PGL4; SDH; SDH1; SDH2; SDHIP

**Product images:**

Gel: 8%SDS-PAGE

Lysate: 40 µg

Lane 1-5: 293T cells

mouse brain tissue

human fetal liver tissue

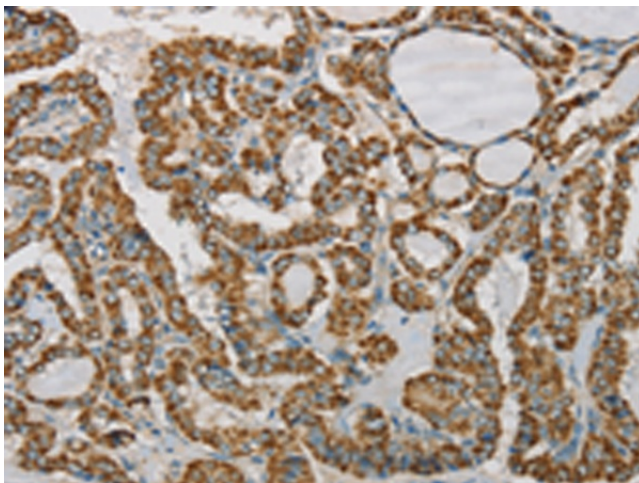
hepg2 cells

Jurkat cells

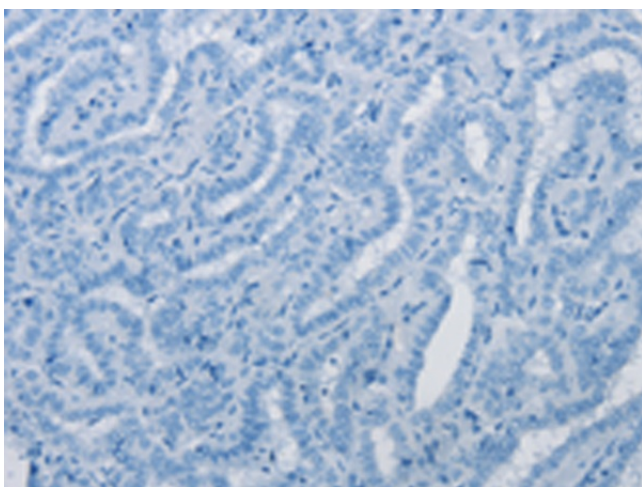
Primary antibody: [TA367240] (SDHB Antibody) at dilution 1/300

Secondary antibody: Goat anti rabbit IgG at 1/8000 dilution

Exposure time: 30 seconds



Immunohistochemistry of paraffin-embedded Human thyroid cancer tissue using [TA367240] (SDHB Antibody) at dilution 1/20 (Original magnification: ×200)



Immunohistochemistry of paraffin-embedded Human thyroid cancer tissue using [TA367240] (SDHB Antibody) at dilution 1/20, treated with synthetic peptide. (Original magnification: ×200)