

## Product datasheet for **TA367239S**

### SCP3 (SYCP3) Rabbit Polyclonal Antibody

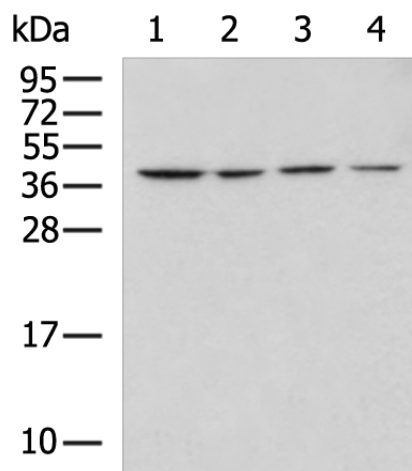
#### Product data:

Product Type:	Primary Antibodies
Applications:	IHC, WB
Recommended Dilution:	WB: 500-2000 WB positive control: TM4 cell, HepG2 cell, Mouse testis tissue, Jurkat cell lysates IHC: 50-100 Positive control: Human thyroid cancer Predicted cell location: Cytoplasm
Reactivity:	Human, Mouse, Rat
Host:	Rabbit
Isotype:	IgG
Clonality:	Polyclonal
Immunogen:	Synthetic peptide of human SYCP3
Formulation:	pH7.4 PBS, 0.05% NaN <sub>3</sub> , 40% Glycerol
Purification:	Antigen affinity purification
Conjugation:	Unconjugated
Storage:	Store at -20°C.
Stability:	1 year
Predicted Protein Size:	28 kDa
Gene Name:	synaptonemal complex protein 3
Database Link:	<a href="#">Entrez Gene 50511 Human Q8IZU3</a>
Background:	This gene encodes an essential structural component of the synaptonemal complex. This complex is involved in synapsis, recombination and segregation of meiotic chromosomes. Mutations in this gene are associated with azoospermia in males and susceptibility to pregnancy loss in females. Alternate splicing results in multiple transcript variants that encode the same protein.
Synonyms:	COR1; MGC71888; OTTHUMP00000196389; OTTHUMP00000196390; SCP-3; SCP3

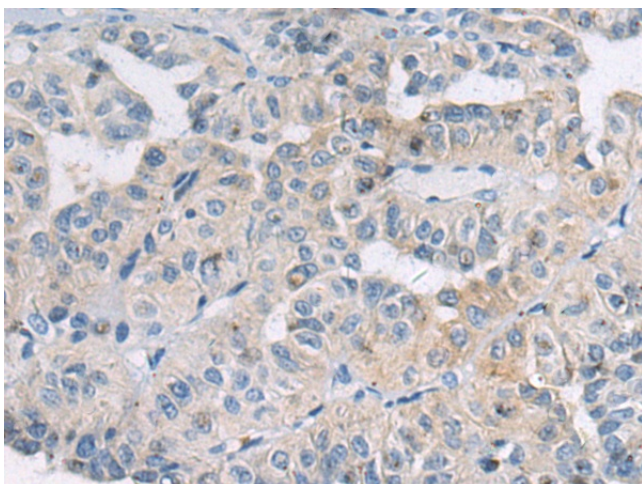


[View online »](#)

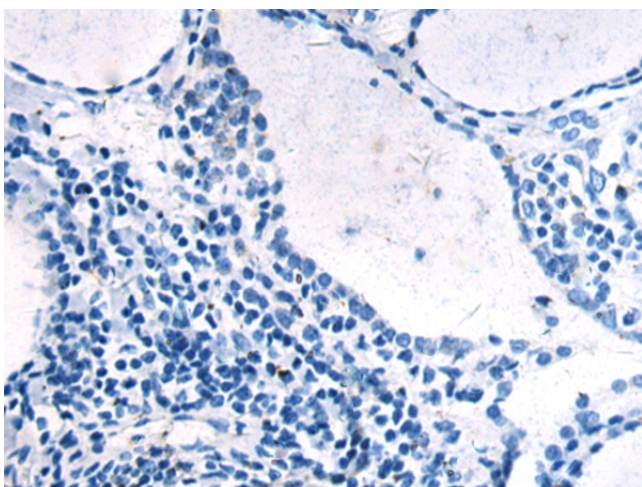
## Product images:



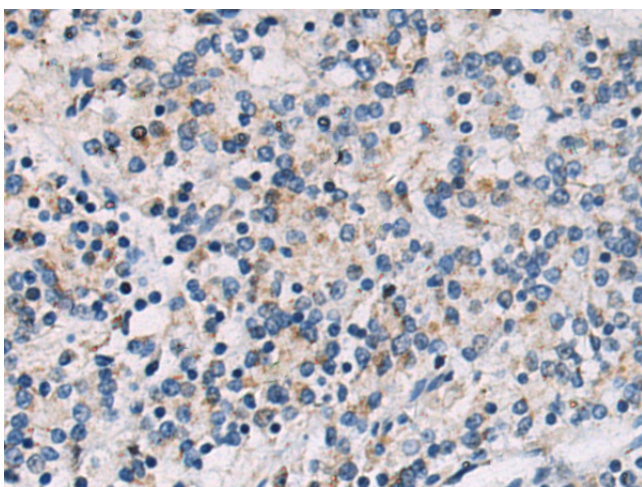
Gel: 12%SDS-PAGE  
Lysate: 40  $\mu$ g  
Lane 1-4: TM4 cell  
HepG2 cell  
Mouse testis tissue  
Jurkat cell lysates  
Primary antibody: [TA367239] (SYCP3 Antibody)  
at dilution 1/800  
Secondary antibody: Goat anti rabbit IgG at  
1/5000 dilution  
Exposure time: 90 seconds



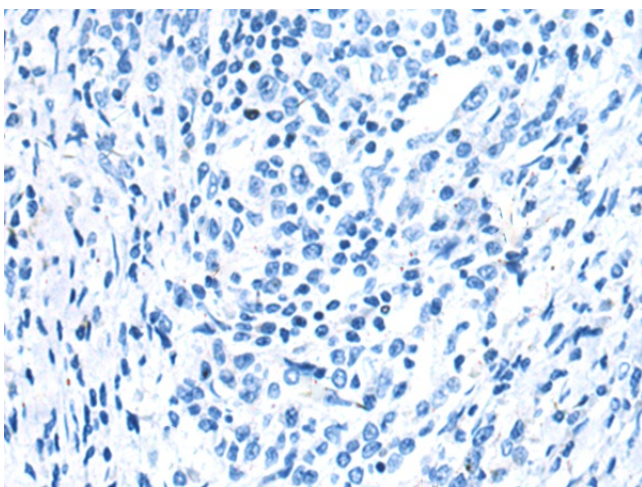
Immunohistochemistry of paraffin-embedded  
Human thyroid cancer tissue using [TA367239]  
(SYCP3 Antibody) at dilution 1/50 (Original  
magnification:  $\times 200$ )



Immunohistochemistry of paraffin-embedded Human thyroid cancer tissue using [TA367239] (SYCP3 Antibody) at dilution 1/50, treated with synthetic peptide. (Original magnification:  $\times 200$ )



Immunohistochemistry of paraffin-embedded Human gastric cancer tissue using [TA367239] (SYCP3 Antibody) at dilution 1/50 (Original magnification:  $\times 200$ )



Immunohistochemistry of paraffin-embedded Human gastric cancer tissue using [TA367239] (SYCP3 Antibody) at dilution 1/50, treated with synthetic peptide. (Original magnification:  $\times 200$ )