

Product datasheet for **TA367234**

SASH1 Rabbit Polyclonal Antibody

Product data:

Product Type:	Primary Antibodies
Applications:	IHC, WB
Recommended Dilution:	WB: 500-2000 WB positive control: Human urinary bladder tissue lysate IHC: 30-150 Positive control: Human esophagus cancer Predicted cell location: Nucleus
Reactivity:	Human, Mouse
Host:	Rabbit
Isotype:	IgG
Clonality:	Polyclonal
Immunogen:	Synthetic peptide of human SASH1
Formulation:	pH7.4 PBS, 0.05% NaN ₃ , 40% Glycerol
Concentration:	lot specific
Purification:	Antigen affinity purification
Conjugation:	Unconjugated
Storage:	Store at -20°C.
Stability:	1 year
Predicted Protein Size:	137 kDa
Gene Name:	SAM and SH3 domain containing 1
Database Link:	Entrez Gene 23328 Human O94885

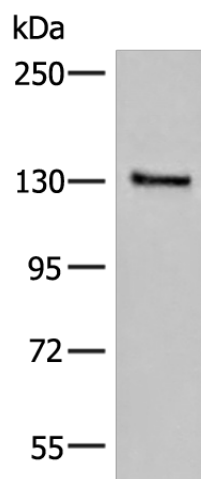
Background: This gene encodes a scaffold protein involved in the TLR4 signaling pathway that may stimulate cytokine production and endothelial cell migration in response to invading pathogens. The encoded protein has also been described as a potential tumor suppressor that may negatively regulate proliferation, apoptosis, and invasion of cancer cells, and reduced expression of this gene has been observed in multiple human cancers. Mutations in this gene may be associated with abnormal skin pigmentation in human patients.



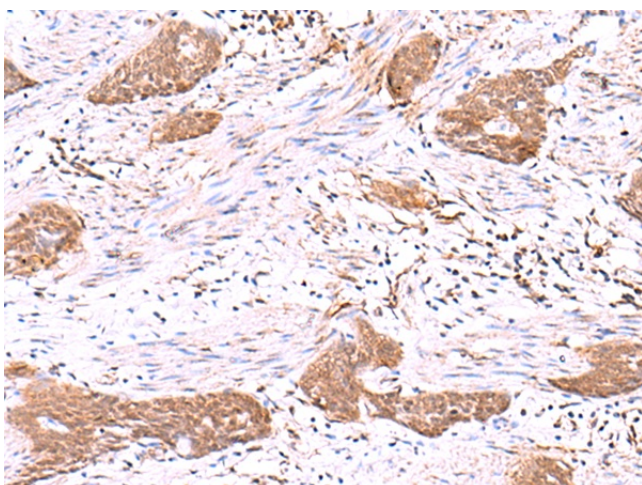
[View online »](#)

Synonyms: 2500002E12Rik; dj323M4; dj323M4.1; KIAA0790; PEPE1; RP3-323M4.1; SH3D6A

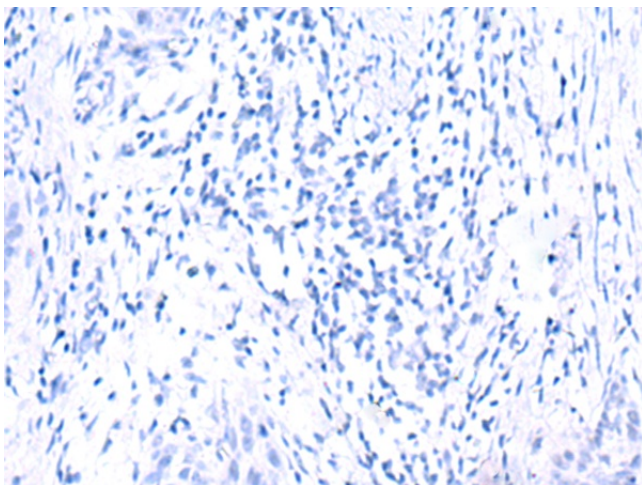
Product images:



Gel: 6%SDS-PAGE
Lysate: 40 μ g
Lane: Human urinary bladder tissue lysate
Primary antibody: TA367234 (SASH1 Antibody) at dilution 1/300
Secondary antibody: Goat anti rabbit IgG at 1/8000 dilution
Exposure time: 20 seconds



Immunohistochemistry of paraffin-embedded Human esophagus cancer tissue using TA367234 (SASH1 Antibody) at dilution 1/30 (Original magnification: $\times 200$)



Immunohistochemistry of paraffin-embedded Human esophagus cancer tissue using TA367234 (SASH1 Antibody) at dilution 1/30, treated with synthetic peptide. (Original magnification: $\times 200$)