

Product datasheet for **TA367232**

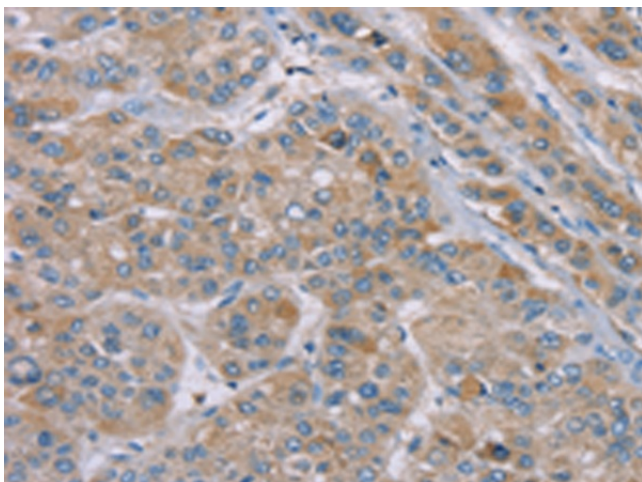
SAMD9 Rabbit Polyclonal Antibody

Product data:

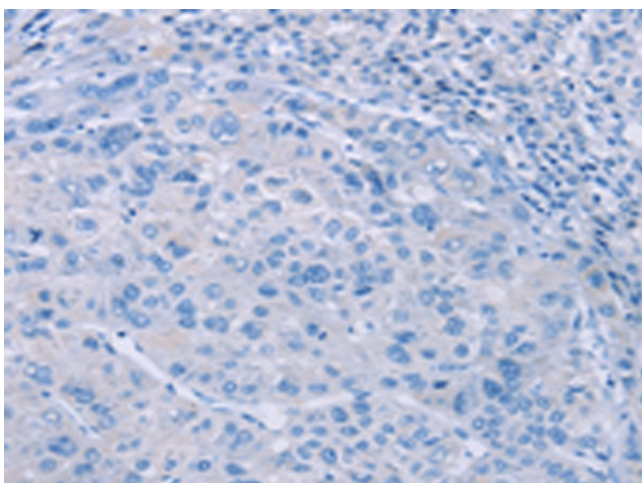
| | |
|-----------------------|---|
| Product Type: | Primary Antibodies |
| Applications: | IHC |
| Recommended Dilution: | IHC: 25-100 Positive control: Human liver cancer Predicted cell location: Cytoplasm |
| Reactivity: | Human |
| Host: | Rabbit |
| Isotype: | IgG |
| Clonality: | Polyclonal |
| Immunogen: | Synthetic peptide of human SAMD9 |
| Formulation: | pH7.4 PBS, 0.05% NaN ₃ , 40% Glycerol |
| Concentration: | lot specific |
| Purification: | Antigen affinity purification |
| Conjugation: | Unconjugated |
| Storage: | Store at -20°C. |
| Stability: | 1 year |
| Gene Name: | sterile alpha motif domain containing 9 |
| Database Link: | Entrez Gene 54809 Human Q5K651 |
| Background: | This gene encodes a sterile alpha motif domain-containing protein. The encoded protein localizes to the cytoplasm and may play a role in regulating cell proliferation and apoptosis. Mutations in this gene are the cause of normophosphatemic familial tumoral calcinosis. Alternate splicing results in multiple transcript variants that encode the same protein. |
| Synonyms: | C7orf5; DRIF1; FLJ20073; KIAA2004; NFTC; OEF1; OEF2 |



[View online »](#)

Product images:

Immunohistochemistry of paraffin-embedded Human liver cancer tissue using TA367232 (SAMd9 Antibody) at dilution 1/35 (Original magnification: $\times 200$)



Immunohistochemistry of paraffin-embedded Human liver cancer tissue using TA367232 (SAMd9 Antibody) at dilution 1/35, treated with synthetic peptide. (Original magnification: $\times 200$)