

## Product datasheet for **TA367231**

### **SAMD4B Rabbit Polyclonal Antibody**

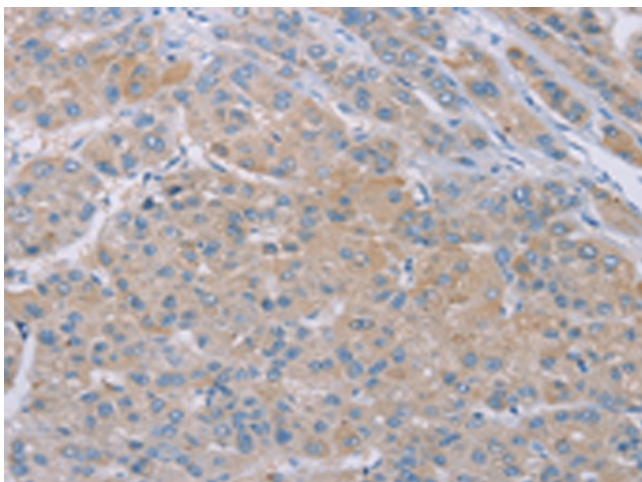
#### **Product data:**

Product Type:	Primary Antibodies
Applications:	IHC
Recommended Dilution:	IHC: 10-50 Positive control: Human liver cancer Predicted cell location: Cytoplasm
Reactivity:	Human, Mouse
Host:	Rabbit
Isotype:	IgG
Clonality:	Polyclonal
Immunogen:	Synthetic peptide of human SAMD4B
Formulation:	pH7.4 PBS, 0.05% NaN <sub>3</sub> , 40% Glycerol
Concentration:	lot specific
Purification:	Antigen affinity purification
Conjugation:	Unconjugated
Storage:	Store at -20°C.
Stability:	1 year
Gene Name:	sterile alpha motif domain containing 4B
Database Link:	<a href="#">Entrez Gene 55095 Human Q5PRF9</a>
Background:	SMGB; hSmaug2
Synonyms:	FLJ10211; hSmaug2; MGC99832; SMAUG2; SMGB

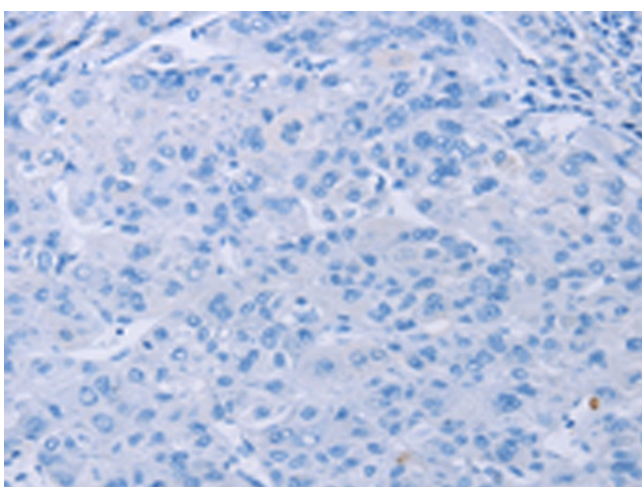


[View online »](#)

## Product images:



Immunohistochemistry of paraffin-embedded Human liver cancer tissue using TA367231 (SAMD4B Antibody) at dilution 1/20 (Original magnification:  $\times 200$ )



Immunohistochemistry of paraffin-embedded Human liver cancer tissue using TA367231 (SAMD4B Antibody) at dilution 1/20, treated with synthetic peptide. (Original magnification:  $\times 200$ )