

Product datasheet for **TA367206S**

EP2 (PTGER2) Rabbit Polyclonal Antibody

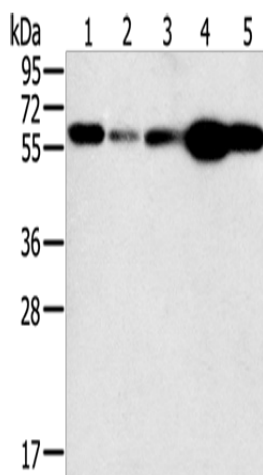
Product data:

Product Type:	Primary Antibodies
Applications:	IHC, WB
Recommended Dilution:	WB: 500-2000 WB positive control: Hela and Jurkat cells, mouse lung tissue, PC3 cells and mouse liver tissue IHC: 25-100 Positive control: Human gastric cancer Predicted cell location: Cytoplasm
Reactivity:	Human, Mouse
Host:	Rabbit
Isotype:	IgG
Clonality:	Polyclonal
Immunogen:	Synthetic peptide of human PTGER2
Formulation:	pH7.4 PBS, 0.05% NaN ₃ , 40% Glycerol
Purification:	Antigen affinity purification
Conjugation:	Unconjugated
Storage:	Store at -20°C.
Stability:	1 year
Predicted Protein Size:	40 kDa
Gene Name:	prostaglandin E receptor 2
Database Link:	Entrez Gene 5732 Human P43116
Background:	This gene encodes a receptor for prostaglandin E ₂ , a metabolite of arachidonic acid which has different biologic activities in a wide range of tissues. Mutations in this gene are associated with aspirin-induced susceptibility to asthma.
Synonyms:	EP2

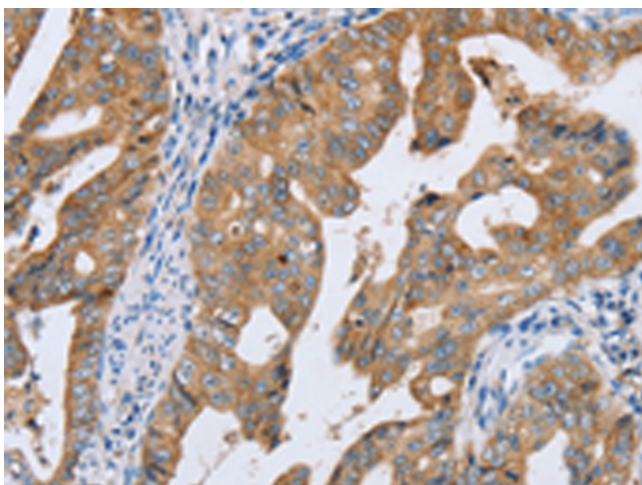


[View online »](#)

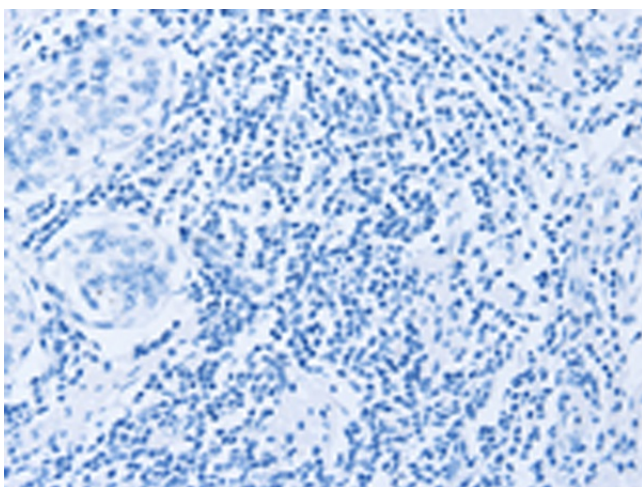
Product images:



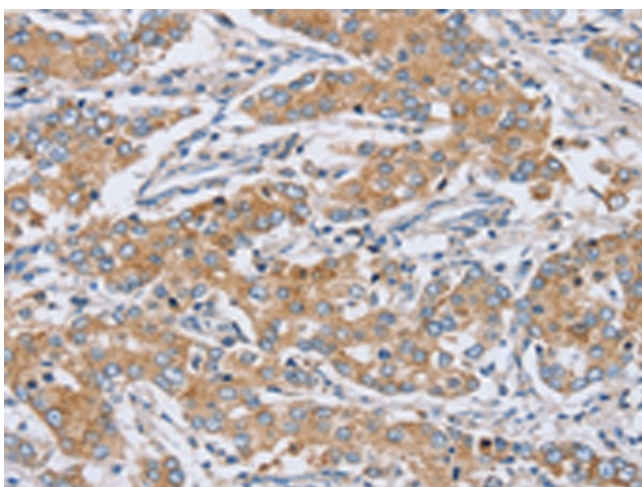
Gel: 10%SDS-PAGE
Lysate: 40 μ g
Lane 1-5: HeLa cells
Jurkat cells
mouse lung tissue
PC3 cells
mouse liver tissue
Primary antibody: [TA367206] (PTGER2 Antibody)
at dilution 1/200
Secondary antibody: Goat anti rabbit IgG at
1/8000 dilution
Exposure time: 30 seconds



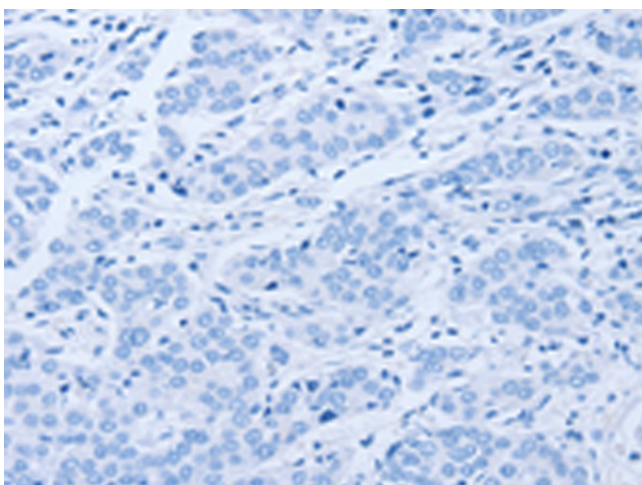
Immunohistochemistry of paraffin-embedded
Human gastric cancer tissue using [TA367206]
(PTGER2 Antibody) at dilution 1/20 (Original
magnification: $\times 200$)



Immunohistochemistry of paraffin-embedded Human gastric cancer tissue using [TA367206] (PTGER2 Antibody) at dilution 1/20, treated with synthetic peptide. (Original magnification: x200)



Immunohistochemistry of paraffin-embedded Human liver cancer tissue using [TA367206] (PTGER2 Antibody) at dilution 1/20 (Original magnification: x200)



Immunohistochemistry of paraffin-embedded Human liver cancer tissue using [TA367206] (PTGER2 Antibody) at dilution 1/20, treated with synthetic peptide. (Original magnification: x200)