

Product datasheet for **TA367206**

EP2 (PTGER2) Rabbit Polyclonal Antibody

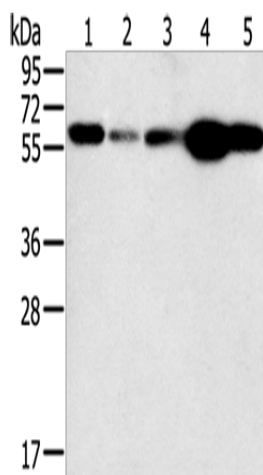
Product data:

| | |
|-------------------------|---|
| Product Type: | Primary Antibodies |
| Applications: | IHC, WB |
| Recommended Dilution: | WB: 500-2000 WB positive control: Hela and Jurkat cells, mouse lung tissue, PC3 cells and mouse liver tissue IHC: 25-100 Positive control: Human gastric cancer Predicted cell location: Cytoplasm |
| Reactivity: | Human, Mouse |
| Host: | Rabbit |
| Isotype: | IgG |
| Clonality: | Polyclonal |
| Immunogen: | Synthetic peptide of human PTGER2 |
| Formulation: | pH7.4 PBS, 0.05% NaN ₃ , 40% Glycerol |
| Concentration: | lot specific |
| Purification: | Antigen affinity purification |
| Conjugation: | Unconjugated |
| Storage: | Store at -20°C. |
| Stability: | 1 year |
| Predicted Protein Size: | 40 kDa |
| Gene Name: | prostaglandin E receptor 2 |
| Database Link: | Entrez Gene 5732 Human P43116 |
| Background: | This gene encodes a receptor for prostaglandin E ₂ , a metabolite of arachidonic acid which has different biologic activities in a wide range of tissues. Mutations in this gene are associated with aspirin-induced susceptibility to asthma. |
| Synonyms: | EP2 |

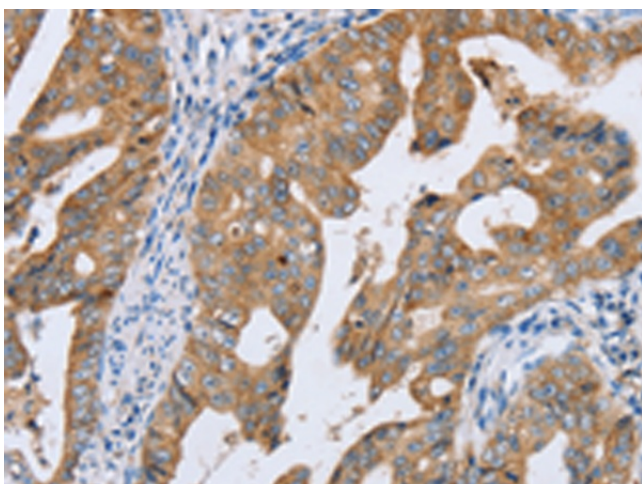


[View online »](#)

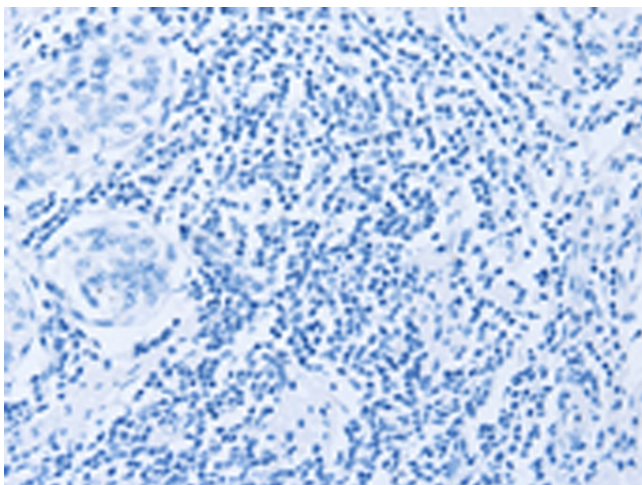
Product images:



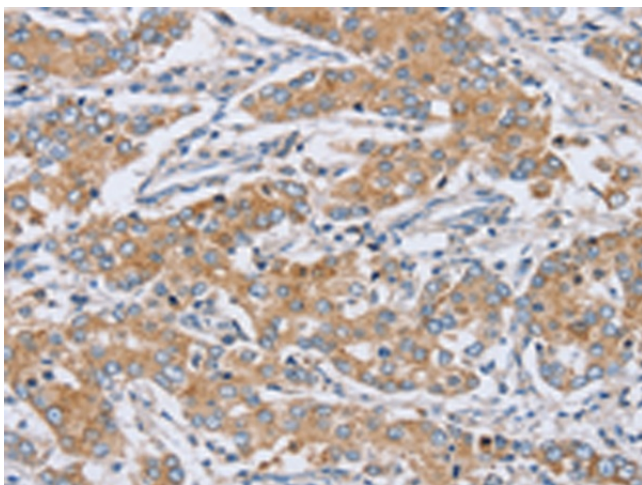
Gel: 10%SDS-PAGE
Lysate: 40 µg
Lane 1-5: HeLa cells
Jurkat cells
mouse lung tissue
PC3 cells
mouse liver tissue
Primary antibody: TA367206 (PTGER2 Antibody)
at dilution 1/200
Secondary antibody: Goat anti rabbit IgG at
1/8000 dilution
Exposure time: 30 seconds



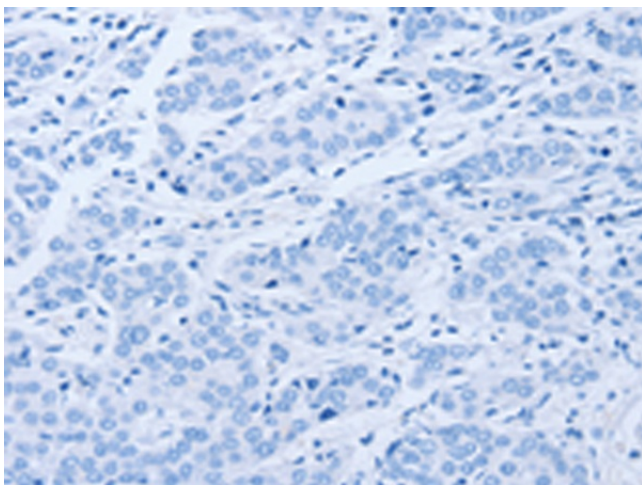
Immunohistochemistry of paraffin-embedded
Human gastric cancer tissue using TA367206
(PTGER2 Antibody) at dilution 1/20 (Original
magnification: ×200)



Immunohistochemistry of paraffin-embedded Human gastric cancer tissue using TA367206 (PTGER2 Antibody) at dilution 1/20, treated with synthetic peptide. (Original magnification: ×200)



Immunohistochemistry of paraffin-embedded Human liver cancer tissue using TA367206 (PTGER2 Antibody) at dilution 1/20 (Original magnification: ×200)



Immunohistochemistry of paraffin-embedded Human liver cancer tissue using TA367206 (PTGER2 Antibody) at dilution 1/20, treated with synthetic peptide. (Original magnification: ×200)