

## Product datasheet for **TA367198S**

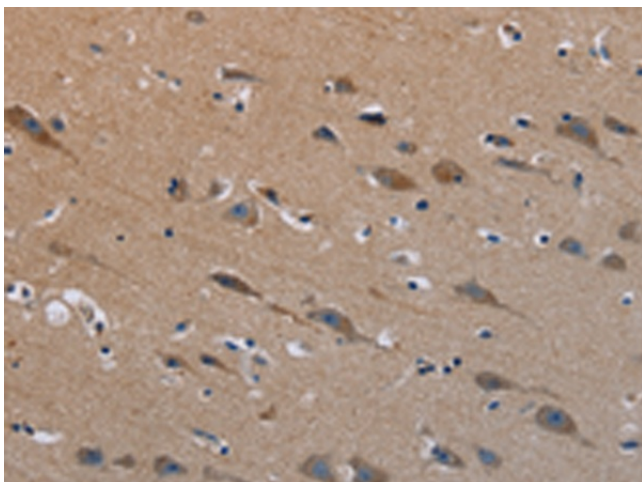
### Plexin D1 (PLXND1) Rabbit Polyclonal Antibody

#### Product data:

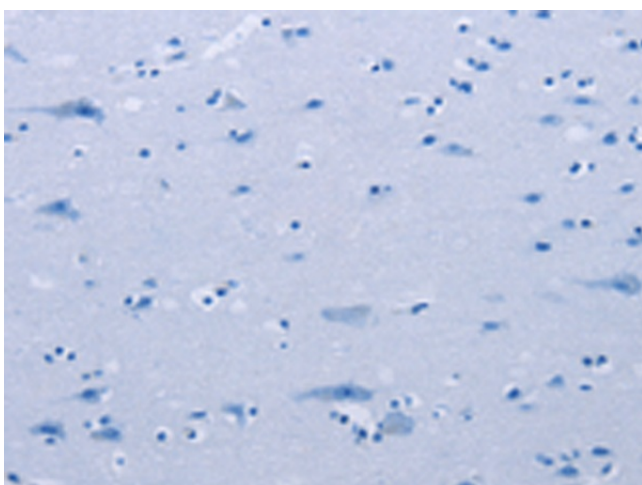
Product Type:	Primary Antibodies
Applications:	IHC
Recommended Dilution:	IHC: 25-100 Positive control: Human brain Predicted cell location: Cytoplasm
Reactivity:	Human, Mouse
Host:	Rabbit
Isotype:	IgG
Clonality:	Polyclonal
Immunogen:	Synthetic peptide of human PLXND1
Formulation:	pH7.4 PBS, 0.05% NaN <sub>3</sub> , 40% Glycerol
Purification:	Antigen affinity purification
Conjugation:	Unconjugated
Storage:	Store at -20°C.
Stability:	1 year
Gene Name:	plexin D1
Database Link:	<a href="#">Entrez Gene 23129 Human Q9Y4D7</a>
Background:	Cell surface receptor for SEMA4A and for class 3 semaphorins, such as SEMA3A, SEMA3C and SEMA3E. Plays an important role in cell-cell signaling, and in regulating the migration of a wide spectrum of cell types. Regulates the migration of thymocytes in the medulla. Regulates endothelial cell migration. Plays an important role in ensuring the specificity of synapse formation. Required for normal development of the heart and vasculature. By similarity. Mediates anti-angiogenic signaling in response to SEMA3E.
Synonyms:	KIAA0620; MGC75353; PLEXD1



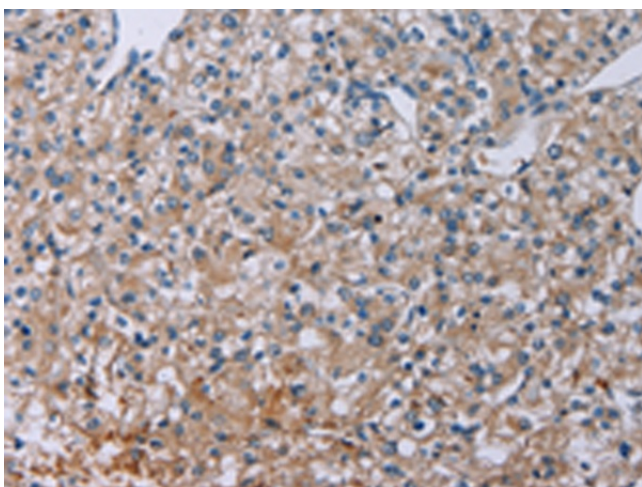
[View online »](#)

**Product images:**

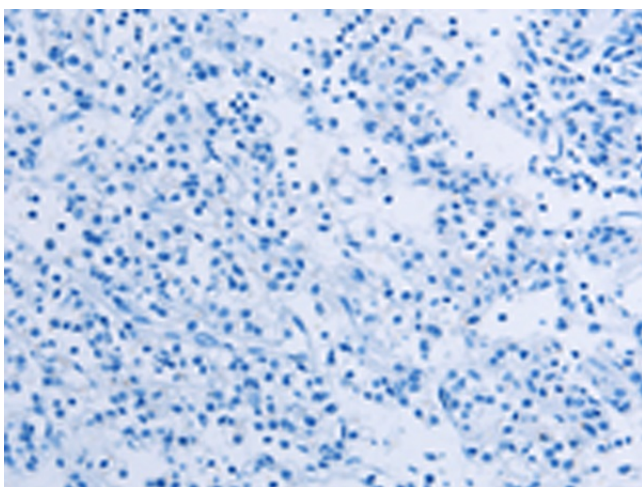
Immunohistochemistry of paraffin-embedded Human brain tissue using [TA367198] (PLXND1 Antibody) at dilution 1/40 (Original magnification: ×200)



Immunohistochemistry of paraffin-embedded Human brain tissue using [TA367198] (PLXND1 Antibody) at dilution 1/40, treated with synthetic peptide. (Original magnification: ×200)



Immunohistochemistry of paraffin-embedded Human prostate cancer tissue using [TA367198] (PLXND1 Antibody) at dilution 1/40 (Original magnification: ×200)



Immunohistochemistry of paraffin-embedded Human prostate cancer tissue using [TA367198] (PLXND1 Antibody) at dilution 1/40, treated with synthetic peptide. (Original magnification: ×200)