

## Product datasheet for **TA367193S**

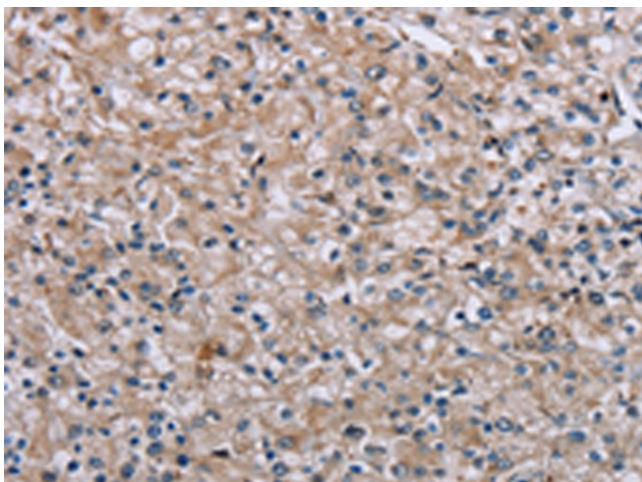
### PLCL1 Rabbit Polyclonal Antibody

#### Product data:

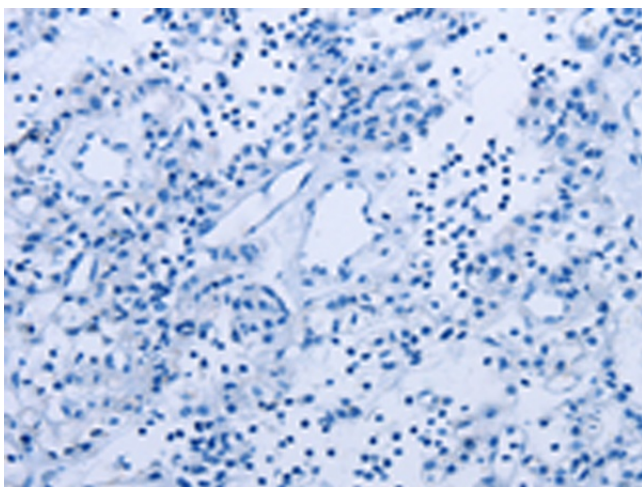
Product Type:	Primary Antibodies
Applications:	IHC
Recommended Dilution:	IHC: 25-100 Positive control: Human prostate cancer Predicted cell location: Cytoplasm
Reactivity:	Human
Host:	Rabbit
Isotype:	IgG
Clonality:	Polyclonal
Immunogen:	Synthetic peptide of human PLCL1
Formulation:	pH7.4 PBS, 0.05% NaN <sub>3</sub> , 40% Glycerol
Purification:	Antigen affinity purification
Conjugation:	Unconjugated
Storage:	Store at -20°C.
Stability:	1 year
Gene Name:	phospholipase C like 1
Database Link:	<a href="#">Entrez Gene 5334 Human Q15111</a>
Background:	PLC-L (for PLC-deleted in lung carcinoma) is a PLC family member, the expression of which is decreased in small cell lung carcinomas. PLC-L is normally expressed in a variety of fetal and adult organs including the lung. PLC-L is thought to be involved in inositol phospholipid-based intracellular signaling cascade and aberrant expression of PLC-L may contribute to the genesis or progression of human lung carcinoma.
Synonyms:	MGC126580; MGC138190; PLC-L; PLC-L1; PLCE; PLCL; PLDL1; PRIP



[View online »](#)

**Product images:**

Immunohistochemistry of paraffin-embedded Human prostate cancer tissue using [TA367193] (PLCL1 Antibody) at dilution 1/40 (Original magnification: ×200)



Immunohistochemistry of paraffin-embedded Human prostate cancer tissue using [TA367193] (PLCL1 Antibody) at dilution 1/40, treated with synthetic peptide. (Original magnification: ×200)