

## Product datasheet for **TA367192S**

### Phospholipase C beta 3 (PLCB3) Rabbit Polyclonal Antibody

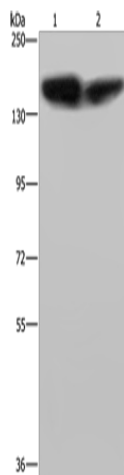
#### Product data:

Product Type:	Primary Antibodies
Applications:	IHC, WB
Recommended Dilution:	WB: 200-1000 WB positive control: A431 and PC3 cells IHC: 50-200 Positive control: Human thyroid cancer Predicted cell location: Cytoplasm
Reactivity:	Human, Mouse, Rat
Host:	Rabbit
Isotype:	IgG
Clonality:	Polyclonal
Immunogen:	Synthetic peptide of human PLCB3
Formulation:	pH7.4 PBS, 0.05% NaN <sub>3</sub> , 40% Glycerol
Purification:	Antigen affinity purification
Conjugation:	Unconjugated
Storage:	Store at -20°C.
Stability:	1 year
Predicted Protein Size:	139 kDa
Gene Name:	phospholipase C beta 3
Database Link:	<a href="#">Entrez Gene 5331 Human Q01970</a>
Background:	This gene encodes a member of the phosphoinositide phospholipase C beta enzyme family that catalyze the production of the secondary messengers diacylglycerol and inositol 1,4,5-triphosphate from phosphatidylinositol in G-protein-linked receptor-mediated signal transduction. Alternative splicing results in multiple transcript variants.
Synonyms:	FLJ37084; PLC-beta-3

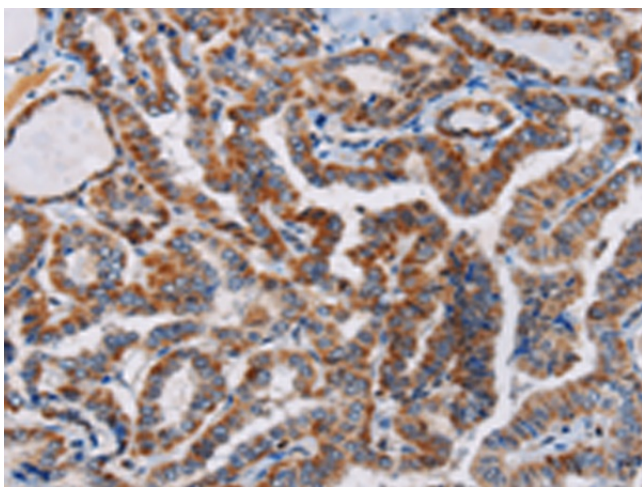


[View online »](#)

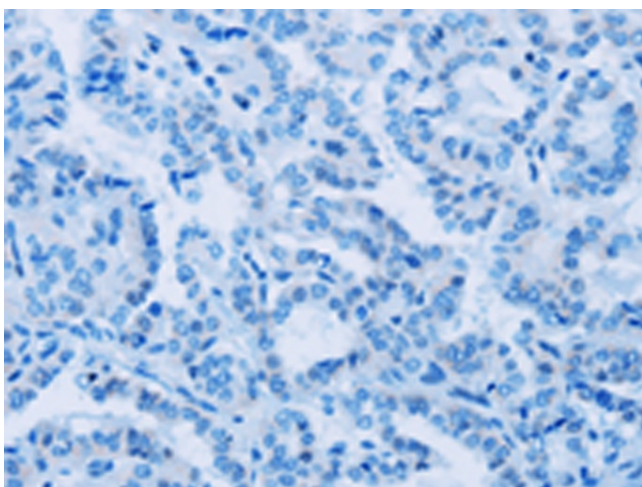
## Product images:



Gel: 6%SDS-PAGE  
Lysate: 40  $\mu$ g  
Lane 1-2: A431 cells  
PC3 cells  
Primary antibody: [TA367192] (PLCB3 Antibody)  
at dilution 1/200  
Secondary antibody: Goat anti rabbit IgG at  
1/8000 dilution  
Exposure time: 3 minutes



Immunohistochemistry of paraffin-embedded  
Human thyroid cancer tissue using [TA367192]  
(PLCB3 Antibody) at dilution 1/40 (Original  
magnification:  $\times 200$ )



Immunohistochemistry of paraffin-embedded Human thyroid cancer tissue using [TA367192] (PLCB3 Antibody) at dilution 1/40, treated with synthetic peptide. (Original magnification:  $\times 200$ )