

Product datasheet for **TA367189**

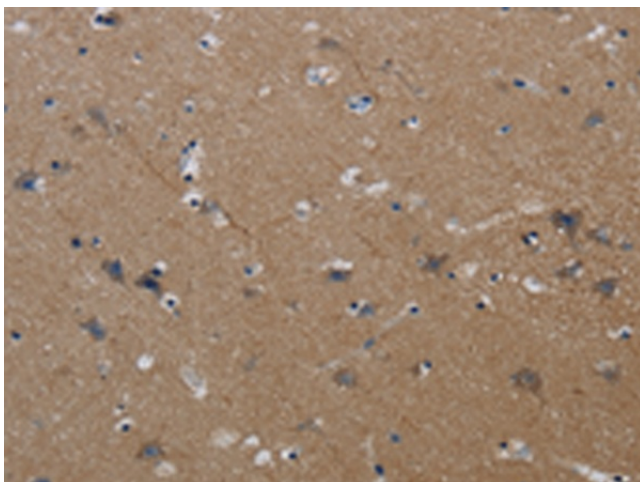
PI 3 Kinase catalytic subunit gamma (PIK3CG) Rabbit Polyclonal Antibody

Product data:

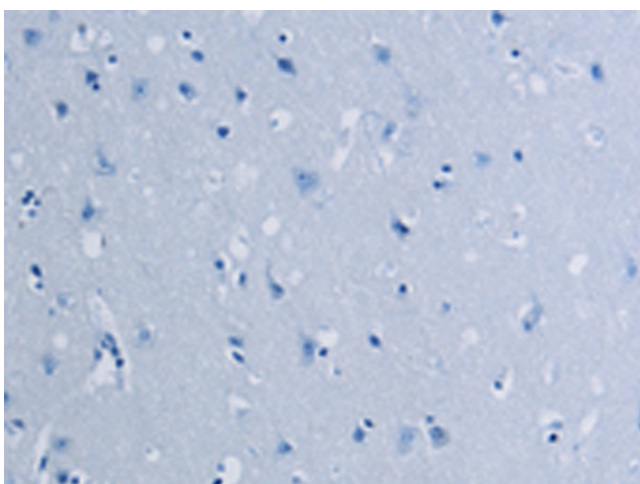
Product Type:	Primary Antibodies
Applications:	IHC
Recommended Dilution:	IHC: 50-200 Positive control: Human brain Predicted cell location: Cytoplasm
Reactivity:	Human, Mouse
Host:	Rabbit
Isotype:	IgG
Clonality:	Polyclonal
Immunogen:	Synthetic peptide of human PIK3CG
Formulation:	pH7.4 PBS, 0.05% NaN ₃ , 40% Glycerol
Concentration:	lot specific
Purification:	Antigen affinity purification
Conjugation:	Unconjugated
Storage:	Store at -20°C.
Stability:	1 year
Gene Name:	phosphatidylinositol-4,5-bisphosphate 3-kinase catalytic subunit gamma
Database Link:	Entrez Gene 5294 Human P48736
Background:	This gene encodes a protein that belongs to the pi3/pi4-kinase family of proteins. The gene product is an enzyme that phosphorylates phosphoinositides on the 3-hydroxyl group of the inositol ring. It is an important modulator of extracellular signals, including those elicited by E-cadherin-mediated cell-cell adhesion, which plays an important role in maintenance of the structural and functional integrity of epithelia. In addition to its role in promoting assembly of adherens junctions, the protein is thought to play a pivotal role in the regulation of cytotoxicity in NK cells.
Synonyms:	p110-gamma; p120-PI3K; PI3-kinase; PI3CG; PI3K; PI3Kgamma; PIK3; PTDINS-3-kinase



[View online »](#)

Product images:

Immunohistochemistry of paraffin-embedded Human brain tissue using TA367189 (PIK3CG Antibody) at dilution 1/40 (Original magnification: ×200)



Immunohistochemistry of paraffin-embedded Human brain tissue using TA367189 (PIK3CG Antibody) at dilution 1/40, treated with synthetic peptide. (Original magnification: ×200)