

## Product datasheet for **TA367176**

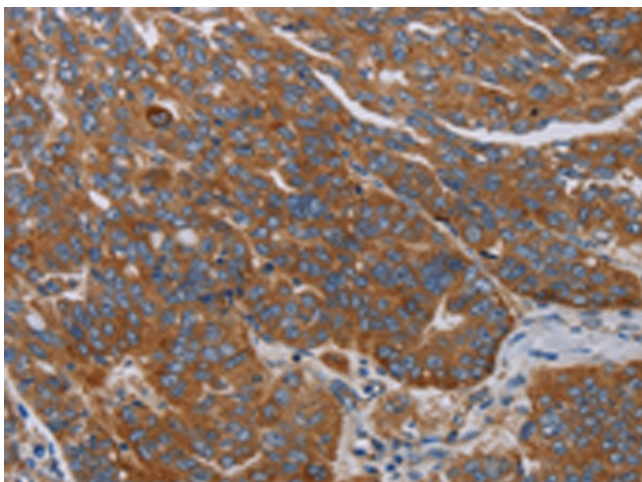
### PARP10 Rabbit Polyclonal Antibody

#### Product data:

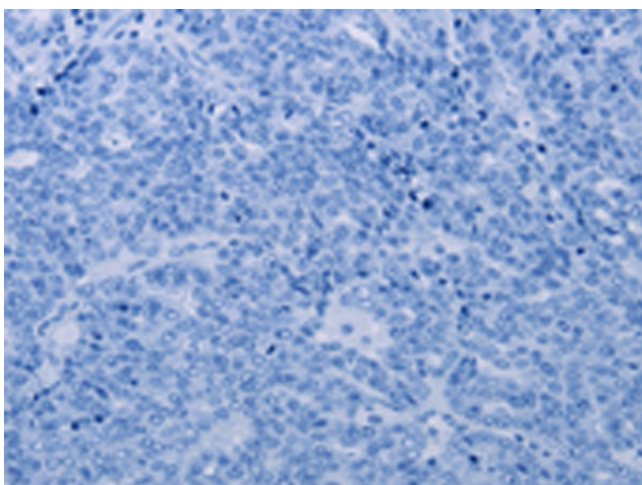
|                       |                                                                                                                                                                                                              |
|-----------------------|--------------------------------------------------------------------------------------------------------------------------------------------------------------------------------------------------------------|
| Product Type:         | Primary Antibodies                                                                                                                                                                                           |
| Applications:         | IHC                                                                                                                                                                                                          |
| Recommended Dilution: | IHC: 50-200<br>Positive control: Human ovarian cancer<br>Predicted cell location: Cytoplasm                                                                                                                  |
| Reactivity:           | Human                                                                                                                                                                                                        |
| Host:                 | Rabbit                                                                                                                                                                                                       |
| Isotype:              | IgG                                                                                                                                                                                                          |
| Clonality:            | Polyclonal                                                                                                                                                                                                   |
| Immunogen:            | Synthetic peptide of human PARP10                                                                                                                                                                            |
| Formulation:          | pH7.4 PBS, 0.05% NaN <sub>3</sub> , 40% Glycerol                                                                                                                                                             |
| Concentration:        | lot specific                                                                                                                                                                                                 |
| Purification:         | Antigen affinity purification                                                                                                                                                                                |
| Conjugation:          | Unconjugated                                                                                                                                                                                                 |
| Storage:              | Store at -20°C.                                                                                                                                                                                              |
| Stability:            | 1 year                                                                                                                                                                                                       |
| Gene Name:            | poly(ADP-ribose) polymerase family member 10                                                                                                                                                                 |
| Database Link:        | <a href="#">Entrez Gene 84875 Human Q53GL7</a>                                                                                                                                                               |
| Background:           | Poly(ADP-ribose) polymerases (PARPs), such as PARP10, regulate gene transcription by altering chromatin organization by adding ADP-ribose to histones. PARPs can also function as transcriptional cofactors. |
| Synonyms:             | FLJ14464; PARP-10                                                                                                                                                                                            |



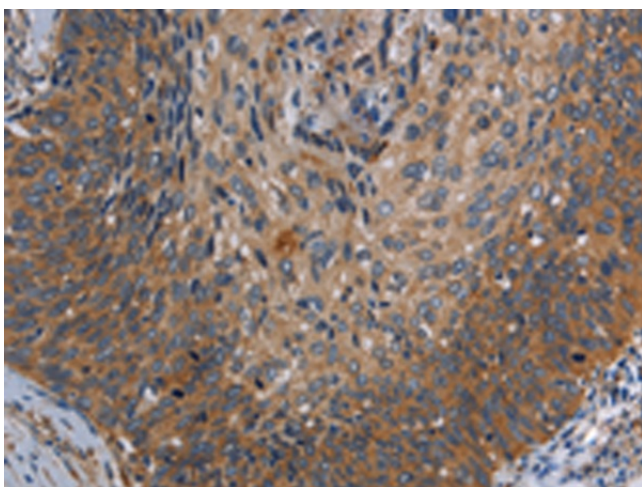
[View online »](#)

**Product images:**

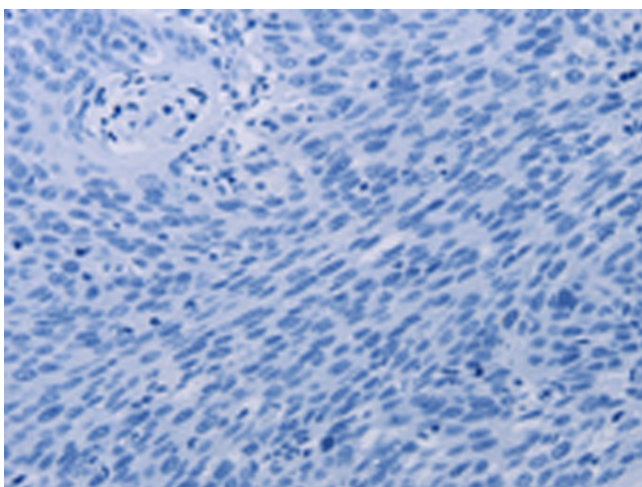
Immunohistochemistry of paraffin-embedded Human ovarian cancer tissue using TA367176 (PARP10 Antibody) at dilution 1/30 (Original magnification:  $\times 200$ )



Immunohistochemistry of paraffin-embedded Human ovarian cancer tissue using TA367176 (PARP10 Antibody) at dilution 1/30, treated with synthetic peptide. (Original magnification:  $\times 200$ )



Immunohistochemistry of paraffin-embedded Human cervical cancer tissue using TA367176 (PARP10 Antibody) at dilution 1/30 (Original magnification:  $\times 200$ )



Immunohistochemistry of paraffin-embedded Human cervical cancer tissue using TA367176 (PARP10 Antibody) at dilution 1/30, treated with synthetic peptide. (Original magnification:  $\times 200$ )