

Product datasheet for **TA367173**

Cytochrome P450 1A2 (CYP1A2) Rabbit Polyclonal Antibody

Product data:

Product Type:	Primary Antibodies
Applications:	WB
Recommended Dilution:	WB: 200-1000 WB positive control: Mouse liver tissue
Reactivity:	Human, Mouse
Host:	Rabbit
Isotype:	IgG
Clonality:	Polyclonal
Immunogen:	Synthetic peptide of human CYP1A2
Formulation:	pH7.4 PBS, 0.05% NaN ₃ , 40% Glycerol
Concentration:	lot specific
Purification:	Antigen affinity purification
Conjugation:	Unconjugated
Storage:	Store at -20°C.
Stability:	1 year
Predicted Protein Size:	58 kDa
Gene Name:	cytochrome P450 family 1 subfamily A member 2
Database Link:	Entrez Gene 1544 Human P05177

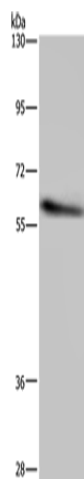
Background: This gene encodes a member of the cytochrome P450 superfamily of enzymes. The cytochrome P450 proteins are monooxygenases which catalyze many reactions involved in drug metabolism and synthesis of cholesterol, steroids and other lipids. The protein encoded by this gene localizes to the endoplasmic reticulum and its expression is induced by some polycyclic aromatic hydrocarbons (PAHs), some of which are found in cigarette smoke. The enzyme's endogenous substrate is unknown; however, it is able to metabolize some PAHs to carcinogenic intermediates. Other xenobiotic substrates for this enzyme include caffeine, aflatoxin B1, and acetaminophen. The transcript from this gene contains four Alu sequences flanked by direct repeats in the 3' untranslated region.



[View online »](#)

Synonyms: CP12; CYP1A2; P(3)450; P3-450; P450(PA); P450-P3

Product images:



Gel: 6%SDS-PAGE
Lysate: 40 μ g
Lane: Mouse liver tissue
Primary antibody: TA367173 (CYP1A2 Antibody)
at dilution 1/290
Secondary antibody: Goat anti rabbit IgG at
1/8000 dilution
Exposure time: 10 seconds