

## Product datasheet for **TA367162S**

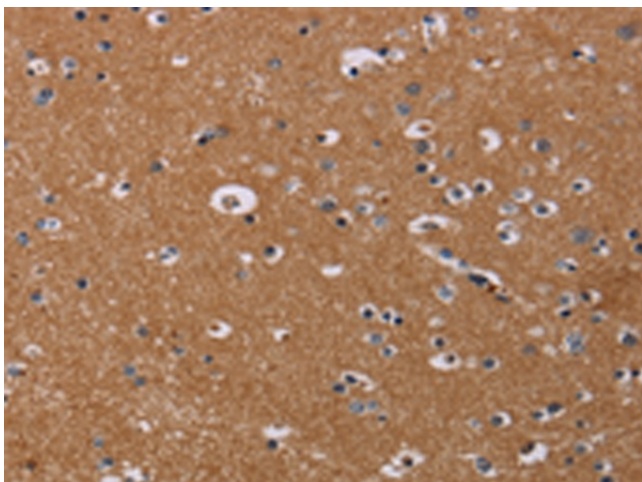
### NRAS Rabbit Polyclonal Antibody

#### Product data:

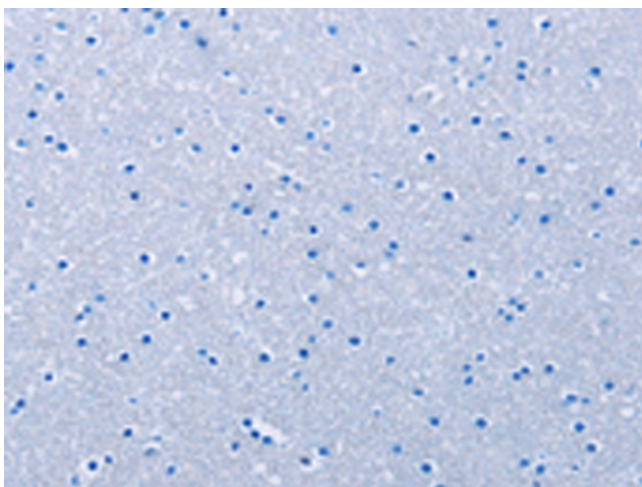
Product Type:	Primary Antibodies
Applications:	IHC
Recommended Dilution:	IHC: 25-100 Positive control: Human brain Predicted cell location: Cytoplasm
Reactivity:	Human, Mouse, Rat
Host:	Rabbit
Isotype:	IgG
Clonality:	Polyclonal
Immunogen:	Synthetic peptide of human NRAS
Formulation:	pH7.4 PBS, 0.05% NaN <sub>3</sub> , 40% Glycerol
Purification:	Antigen affinity purification
Conjugation:	Unconjugated
Storage:	Store at -20°C.
Stability:	1 year
Gene Name:	neuroblastoma RAS viral oncogene homolog
Database Link:	<a href="#">Entrez Gene 4893 Human P01111</a>
Background:	This is an N-ras oncogene encoding a membrane protein that shuttles between the Golgi apparatus and the plasma membrane. This shuttling is regulated through palmitoylation and depalmitoylation by the ZDHHC9-GOLGA7 complex. The encoded protein, which has intrinsic GTPase activity, is activated by a guanine nucleotide-exchange factor and inactivated by a GTPase activating protein.
Synonyms:	ALPS4; HRAS1; N-ras; NRAS1



[View online »](#)

**Product images:**

Immunohistochemistry of paraffin-embedded Human brain tissue using [TA367162] (NRAS Antibody) at dilution 1/30 (Original magnification:  $\times 200$ )



Immunohistochemistry of paraffin-embedded Human brain tissue using [TA367162] (NRAS Antibody) at dilution 1/30, treated with synthetic peptide. (Original magnification:  $\times 200$ )