

Product datasheet for **TA367157**

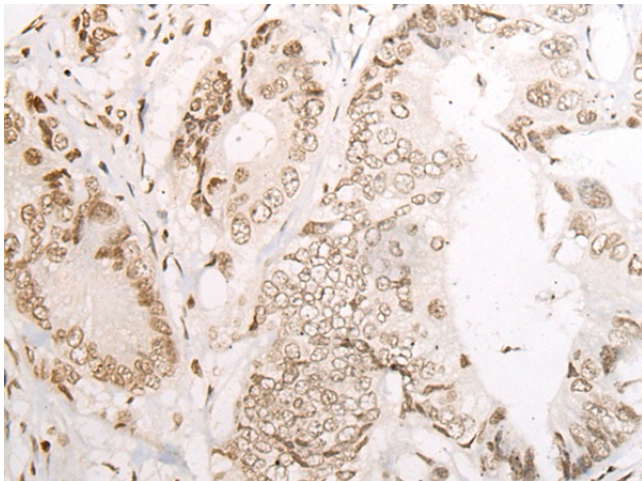
NOL8 Rabbit Polyclonal Antibody

Product data:

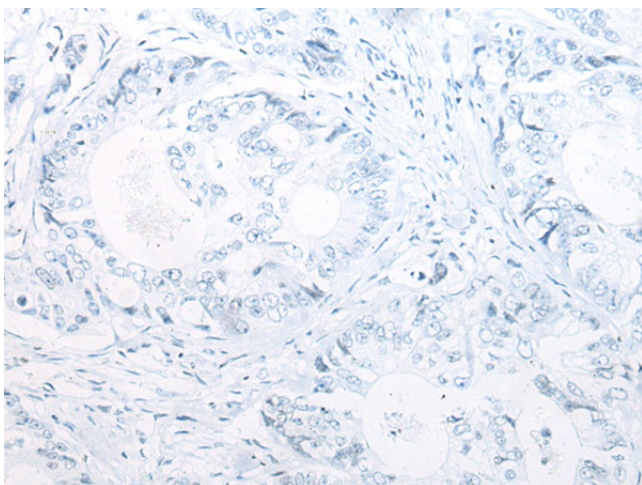
Product Type:	Primary Antibodies
Applications:	IHC
Recommended Dilution:	IHC: 20-100 Positive control: Human colorectal cancer Predicted cell location: Nucleus
Reactivity:	Human
Host:	Rabbit
Isotype:	IgG
Clonality:	Polyclonal
Immunogen:	Synthetic peptide of human NOL8
Formulation:	pH7.4 PBS, 0.05% NaN ₃ , 40% Glycerol
Concentration:	lot specific
Purification:	Antigen affinity purification
Conjugation:	Unconjugated
Storage:	Store at -20°C.
Stability:	1 year
Gene Name:	nucleolar protein 8
Database Link:	Entrez Gene 55035 Human Q76FK4
Background:	NOL8 binds Ras-related GTP-binding proteins (see MIM 608267) and plays a role in cell growth (Sekiguchi et al., 2004 [PubMed 14660641]). Plays an essential role in the survival of diffuse-type gastric cancer cells. Acts as a nucleolar anchoring protein for DDX47. May be involved in regulation of gene expression at the post-transcriptional level or in ribosome biogenesis in cancer cells.
Synonyms:	bA62C3.3; bA62C3.4; C9orf34; DKFZp686P12242; FLJ20736; Nop132



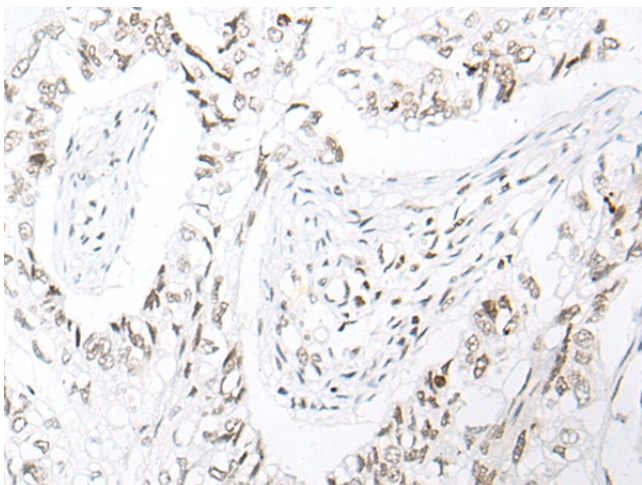
[View online »](#)

Product images:

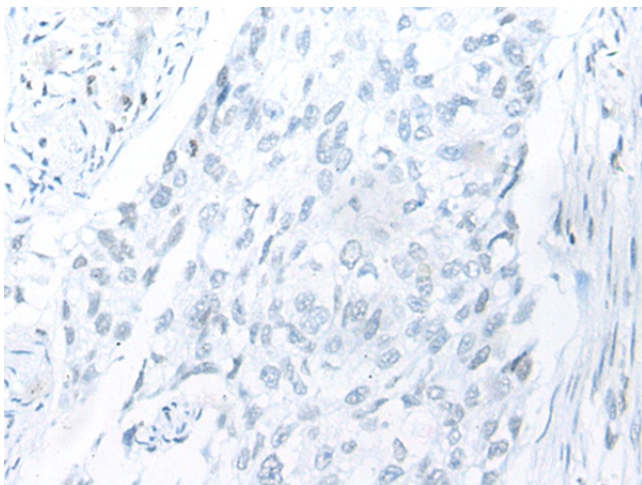
Immunohistochemistry of paraffin-embedded Human colorectal cancer tissue using TA367157 (NOL8 Antibody) at dilution 1/25 (Original magnification: $\times 200$)



Immunohistochemistry of paraffin-embedded Human colorectal cancer tissue using TA367157 (NOL8 Antibody) at dilution 1/25, treated with synthetic peptide. (Original magnification: $\times 200$)



Immunohistochemistry of paraffin-embedded Human lung cancer tissue using TA367157 (NOL8 Antibody) at dilution 1/25 (Original magnification: $\times 200$)



Immunohistochemistry of paraffin-embedded Human lung cancer tissue using TA367157 (NOL8 Antibody) at dilution 1/25, treated with synthetic peptide. (Original magnification: $\times 200$)