

## Product datasheet for **TA367155S**

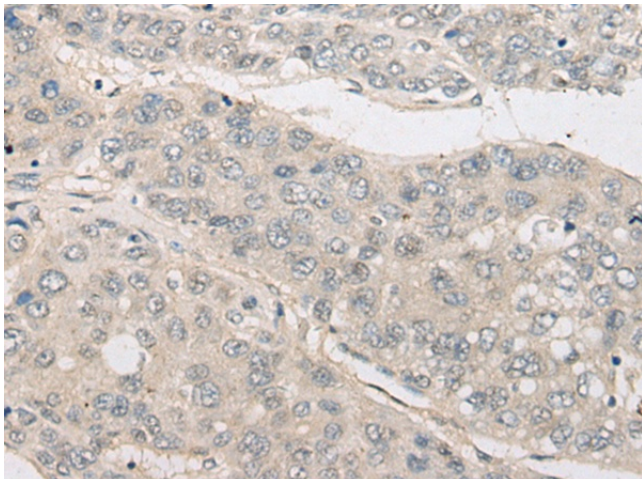
### Neuroigin 1 (NLGN1) Rabbit Polyclonal Antibody

#### Product data:

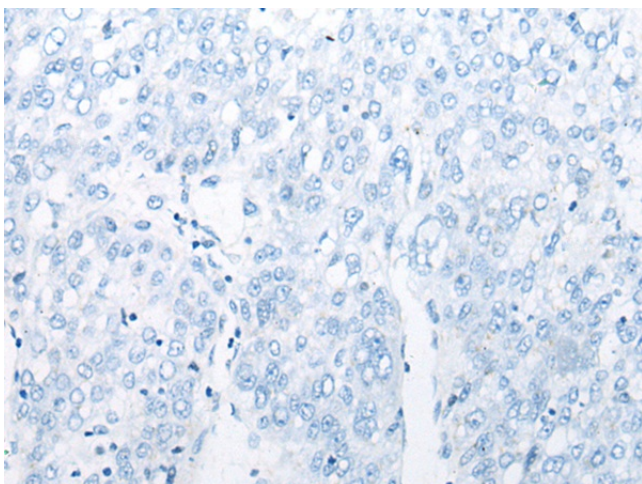
Product Type:	Primary Antibodies
Applications:	IHC
Recommended Dilution:	IHC: 20-100 Positive control: Human liver cancer Predicted cell location: Cytoplasm
Reactivity:	Human, Mouse, Rat
Host:	Rabbit
Isotype:	IgG
Clonality:	Polyclonal
Immunogen:	Synthetic peptide of human NLGN1
Formulation:	pH7.4 PBS, 0.05% NaN <sub>3</sub> , 40% Glycerol
Purification:	Antigen affinity purification
Conjugation:	Unconjugated
Storage:	Store at -20°C.
Stability:	1 year
Gene Name:	neuroigin 1
Database Link:	<a href="#">Entrez Gene 22871 Human Q8N2Q7</a>
Background:	This gene encodes a member of a family of neuronal cell surface proteins. Members of this family may act as splice site-specific ligands for beta-neurexins and may be involved in the formation and remodeling of central nervous system synapses.
Synonyms:	KIAA1070; MGC45115; NL1; OTTHUMP00000211275; OTTHUMP00000211276



[View online »](#)

**Product images:**

Immunohistochemistry of paraffin-embedded Human liver cancer tissue using [TA367155] (NLGN1 Antibody) at dilution 1/25 (Original magnification: x200)



Immunohistochemistry of paraffin-embedded Human liver cancer tissue using [TA367155] (NLGN1 Antibody) at dilution 1/25, treated with synthetic peptide. (Original magnification: x200)