

Product datasheet for **TA367154**

RHEB Rabbit Polyclonal Antibody

Product data:

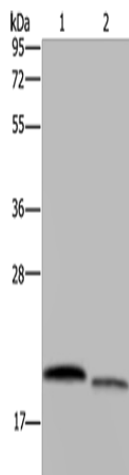
Product Type:	Primary Antibodies
Applications:	WB
Recommended Dilution:	WB: 200-1000 WB positive control: Hela and 231 cells
Reactivity:	Human, Mouse, Rat
Host:	Rabbit
Isotype:	IgG
Clonality:	Polyclonal
Immunogen:	Synthetic peptide of human RHEB
Formulation:	pH7.4 PBS, 0.05% NaN ₃ , 40% Glycerol
Concentration:	lot specific
Purification:	Antigen affinity purification
Conjugation:	Unconjugated
Storage:	Store at -20°C.
Stability:	1 year
Predicted Protein Size:	20 kDa
Gene Name:	Ras homolog enriched in brain
Database Link:	Entrez Gene 6009 Human Q15382

Background: This gene is a member of the small GTPase superfamily and encodes a lipid-anchored, cell membrane protein with five repeats of the RAS-related GTP-binding region. This protein is vital in regulation of growth and cell cycle progression due to its role in the insulin/TOR/S6K signaling pathway. The protein has GTPase activity and shuttles between a GDP-bound form and a GTP-bound form, and farnesylation of the protein is required for this activity. Three pseudogenes have been mapped, two on chromosome 10 and one on chromosome 22.

Synonyms: MGC111559; RHEB2



[View online »](#)

Product images:

Gel: 10%SDS-PAGE

Lysate: 40 μ g

Lane 1-2: HeLa cells
231 cells

Primary antibody: TA367154 (RHEB Antibody) at
dilution 1/350

Secondary antibody: Goat anti rabbit IgG at
1/8000 dilution

Exposure time: 40 seconds