

Product datasheet for **TA367153**

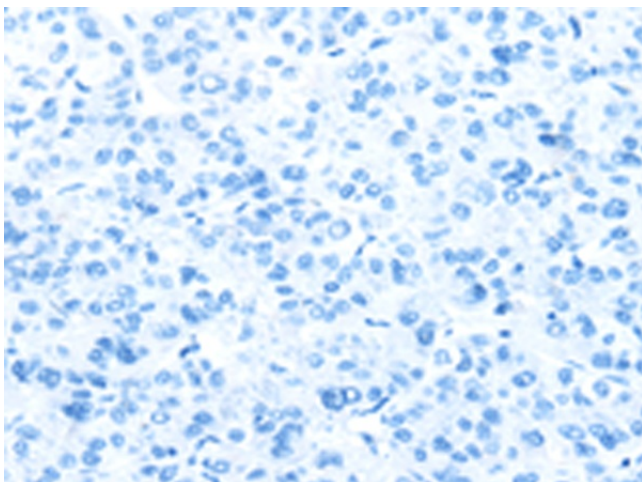
beta 3 Adrenergic Receptor (ADRB3) Rabbit Polyclonal Antibody

Product data:

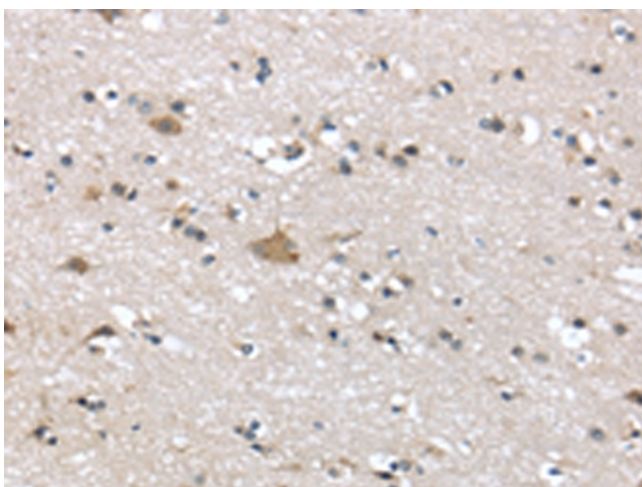
Product Type:	Primary Antibodies
Applications:	IHC, WB
Recommended Dilution:	WB: 200-1000 WB positive control: Mouse brain tissue IHC: 10-50 Positive control: Human liver cancer Predicted cell location: Cell membrane
Reactivity:	Human, Mouse
Host:	Rabbit
Isotype:	IgG
Clonality:	Polyclonal
Immunogen:	Synthetic peptide of human ADRB3
Formulation:	pH7.4 PBS, 0.05% NaN ₃ , 40% Glycerol
Concentration:	lot specific
Purification:	Antigen affinity purification
Conjugation:	Unconjugated
Storage:	Store at -20°C.
Stability:	1 year
Predicted Protein Size:	44 kDa
Gene Name:	adrenoceptor beta 3
Database Link:	Entrez Gene 155 Human P13945
Background:	The protein encoded by this gene belongs to the family of beta adrenergic receptors, which mediate catecholamine-induced activation of adenylate cyclase through the action of G proteins. This receptor is located mainly in the adipose tissue and is involved in the regulation of lipolysis and thermogenesis.
Synonyms:	ADRB3R; B3AR; BETA3AR; FLJ99960



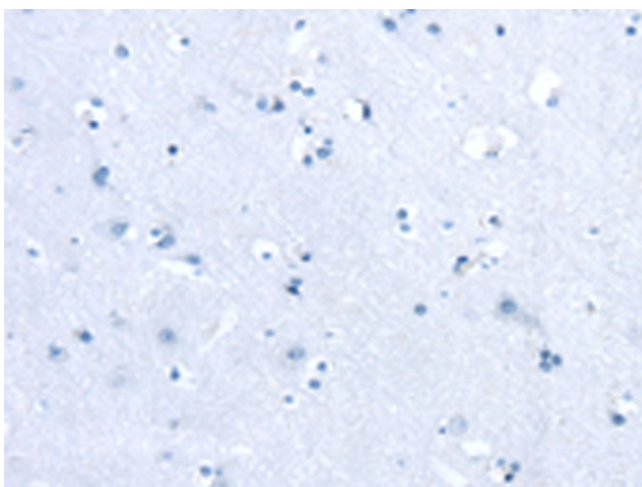
[View online »](#)

Product images:

Immunohistochemistry of paraffin-embedded Human liver cancer tissue using TA367153 (ADRB3 Antibody) at dilution 1/20, treated with synthetic peptide. (Original magnification: ×200)



Immunohistochemistry of paraffin-embedded Human brain tissue using TA367153 (ADRB3 Antibody) at dilution 1/20 (Original magnification: ×200)



Immunohistochemistry of paraffin-embedded Human brain tissue using TA367153 (ADRB3 Antibody) at dilution 1/20, treated with synthetic peptide. (Original magnification: $\times 200$)