

Product datasheet for **TA367147**

NDUFA8 Rabbit Polyclonal Antibody

Product data:

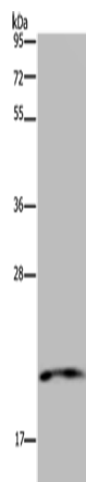
Product Type:	Primary Antibodies
Applications:	IHC, WB
Recommended Dilution:	WB: 200-1000 WB positive control: 293T cells IHC: 50-200 Positive control: Human lung cancer Predicted cell location: Cytoplasm
Reactivity:	Human
Host:	Rabbit
Isotype:	IgG
Clonality:	Polyclonal
Immunogen:	Synthetic peptide of human NDUFA8
Formulation:	pH7.4 PBS, 0.05% NaN ₃ , 40% Glycerol
Concentration:	lot specific
Purification:	Antigen affinity purification
Conjugation:	Unconjugated
Storage:	Store at -20°C.
Stability:	1 year
Predicted Protein Size:	20 kDa
Gene Name:	NADH:ubiquinone oxidoreductase subunit A8
Database Link:	Entrez Gene 4702 Human P51970

Background: The protein encoded by this gene belongs to the complex I 19 kDa subunit family. Mammalian complex I is composed of 45 different subunits. This protein has NADH dehydrogenase activity and oxidoreductase activity. It plays an important role in transferring electrons from NADH to the respiratory chain. The immediate electron acceptor for the enzyme is believed to be ubiquinone.

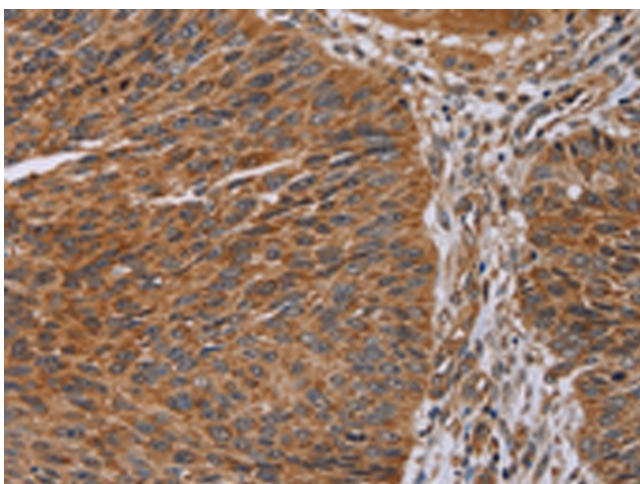
Synonyms: CI-19KD; CI-PGIV; MGC793; PGIV



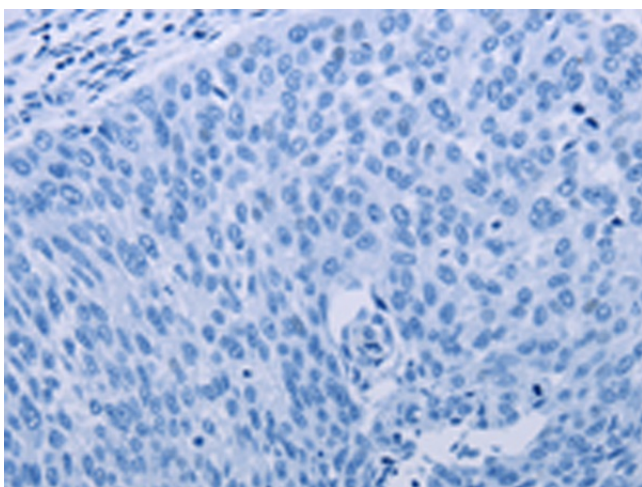
[View online »](#)

Product images:

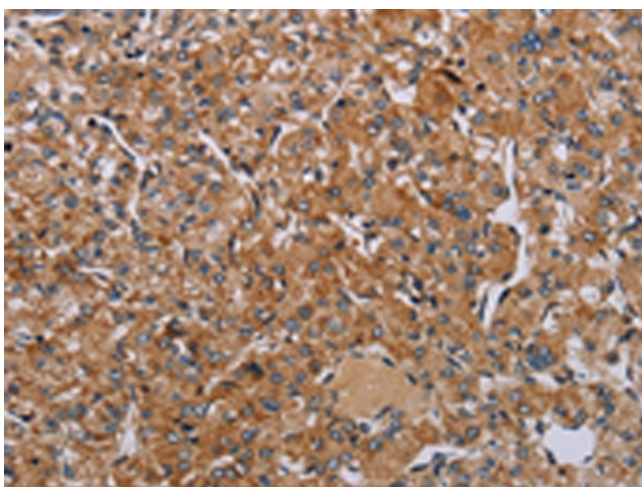
Gel: 10%SDS-PAGE
Lysate: 40 µg
Lane: 293T cells
Primary antibody: TA367147 (NDUFA8 Antibody)
at dilution 1/300
Secondary antibody: Goat anti rabbit IgG at
1/8000 dilution
Exposure time: 5 minutes



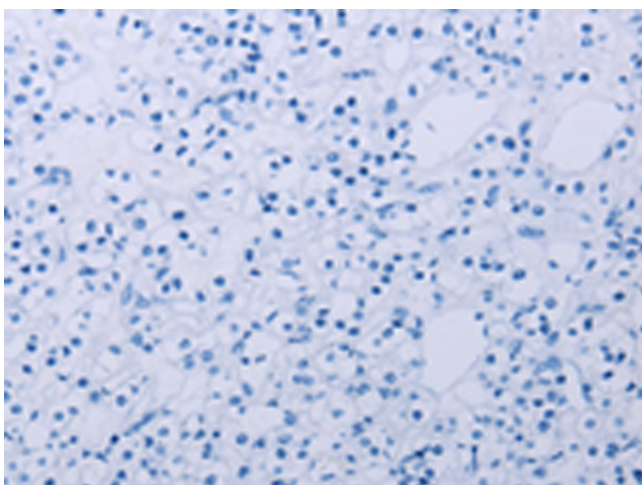
Immunohistochemistry of paraffin-embedded
Human lung cancer tissue using TA367147
(NDUFA8 Antibody) at dilution 1/30 (Original
magnification: ×200)



Immunohistochemistry of paraffin-embedded Human lung cancer tissue using TA367147 (NDUFA8 Antibody) at dilution 1/30, treated with synthetic peptide. (Original magnification: $\times 200$)



Immunohistochemistry of paraffin-embedded Human prostate cancer tissue using TA367147 (NDUFA8 Antibody) at dilution 1/30 (Original magnification: $\times 200$)



Immunohistochemistry of paraffin-embedded Human prostate cancer tissue using TA367147 (NDUFA8 Antibody) at dilution 1/30, treated with synthetic peptide. (Original magnification: $\times 200$)